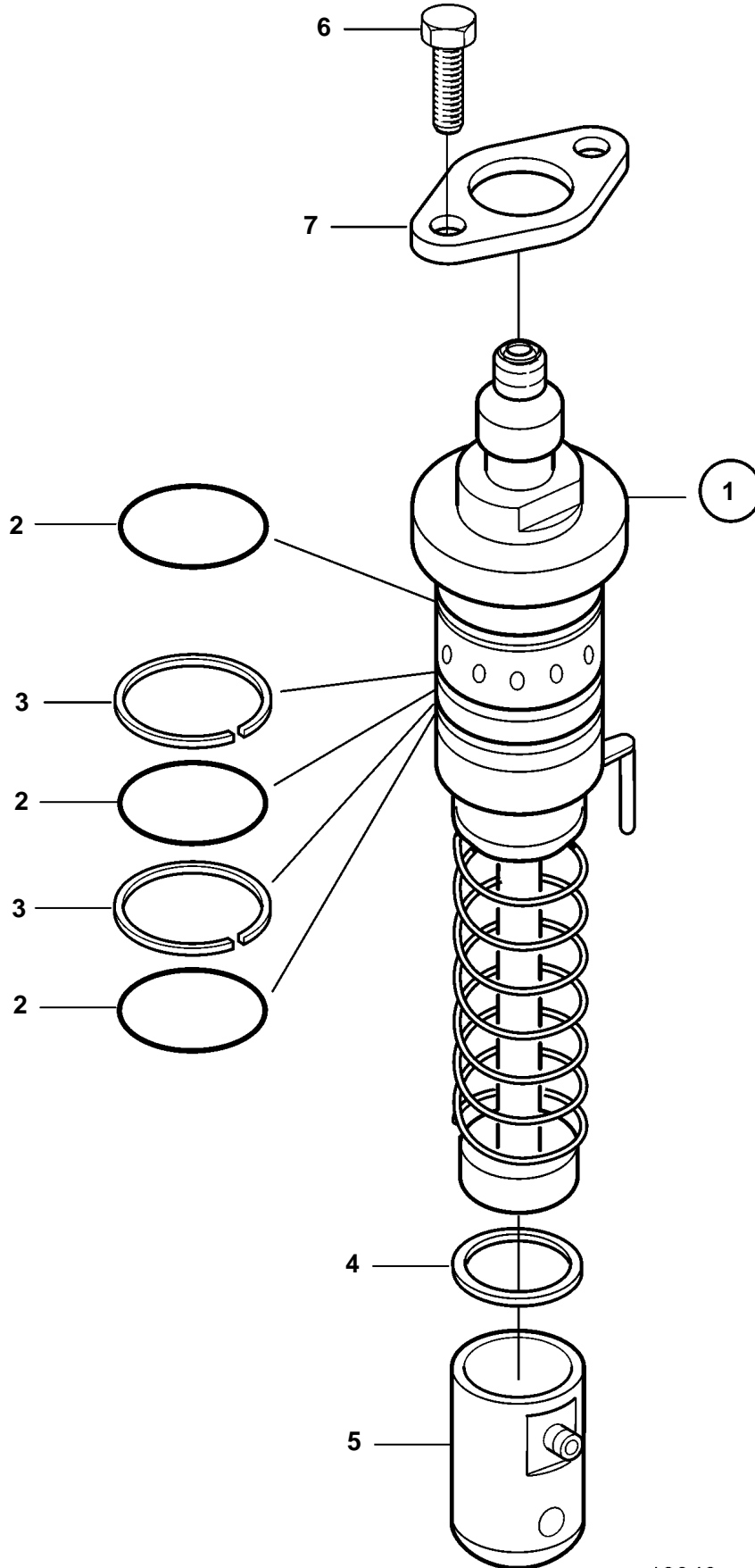


D5A-A T, D5A-A TA, D7A-A T, D7A-A TA



19343

D5A-A T, D5A-A TA, D7A-A T, D7A-A TA

REF	PART NO.	QTY	DESCRIPTION	NOTES
1	20500360	6	Unit injector	
2	20405907	18	· O-ring	
3	20405543	12	· Shim	
4	11700395	X	Shim	TH=1,0mm
	11700396	X	Shim	TH=1,1mm
	11700397	X	Shim	TH=1,2mm
	11700398	X	Shim	TH = 1,3mm
	11700399	X	Shim	TH=1,4mm
	11700400	X	Shim	TH=1,5mm
	11700401	X	Shim	TH = 1,6mm
	11700402	X	Shim	TH=1,7mm
	11700403	X	Shim	TH=1,8mm
	11700404	X	Shim	TH=1,9mm
	11700405	X	Shim	TH=2,0mm
	11700406	X	Shim	TH=2,1mm
	11700407	X	Shim	TH=2,2mm
	11700408	X	Shim	TH=2,3mm
	11700409	X	Shim	TH=2,4mm
	11700410	X	Shim	TH=2,5mm
	11700411	X	Shim	TH=2,6mm
	11700412	X	Shim	TH=2,7mm
	11700413	X	Shim	TH=2,8mm
	11700414	X	Shim	TH=2,9mm
	11700415	X	Shim	TH=3,0mm
	11700416	X	Shim	TH=3,1mm
	11700417	X	Shim	TH=3,2mm
	11700418	X	Shim	TH=3,3mm
	11700419	X	Shim	TH=3,4mm
	11700420	X	Shim	TH=3,5mm
	11700421	X	Shim	TH=3,6mm
	11700422	X	Shim	TH=3,7mm
5	11700392	6	Pump element tappet	
6	20460071	12	Screw	
7	20405565	6	Flange	