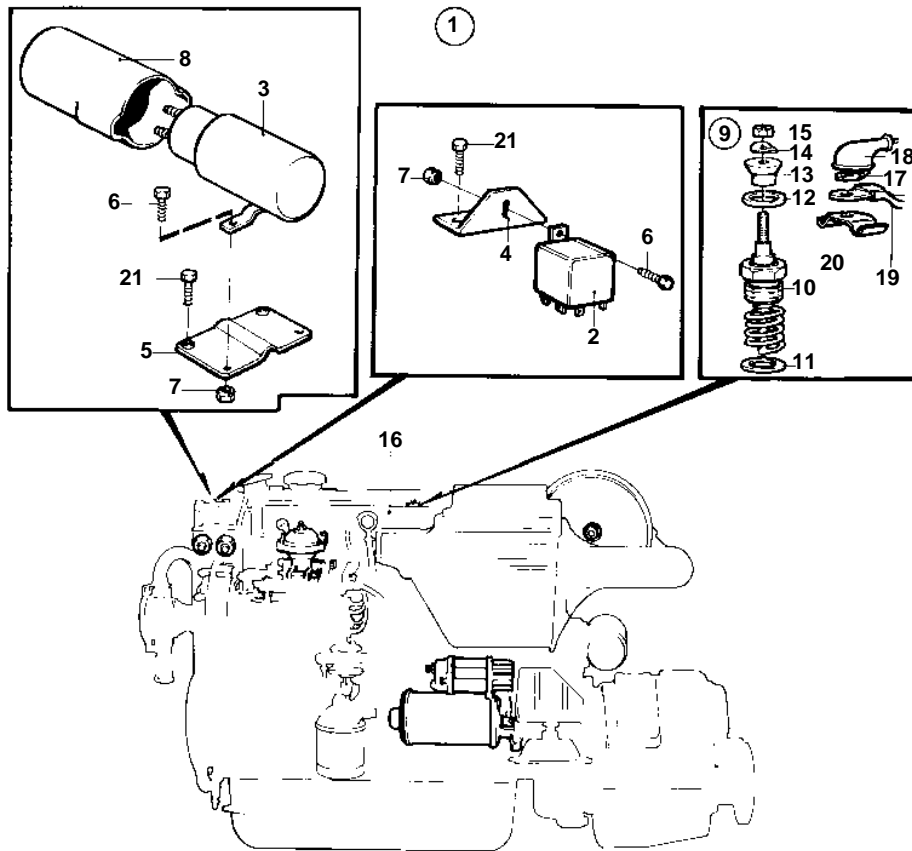


TMD41A,D41A,TAMD41A,AQAD41A,AD41A



9162

TMD41A,D41A,TAMD41A,AQAD41A,AD41A

REF	PART NO.	QTY	DESCRIPTION	NOTES
1	860322	1	Conversion kit	12V. FROM 0 TO 2 GLOWPLUGS.. FOR TMD41A, D41A, TAMD41A, AQAD41A,AD41A (859327)
2	846762	1	· Relay	EARLY TYPE
	860339	1	· Relay	LATE TYPE
4	858937	1	· Bracket	
6	965175	1	· Screw	FOR 846762
	965199	1	· Screw	FOR 860339
7	949278	1	· Lock nut	FOR 846762
	965483	1	· Nut	FOR 860339
9	876132	1	· Heater plug kit	
10		2	· · GLOW PLUG	
11	859211	2	· · Sealing ring	
12		2	· · O-RING	NOT TO BE USED WHERE CONTACT PLATE 860044 SHALL BE USED
13	859328	2	· · Thrust sleeve	
14	941905	2	· · Spring washer	
15	965483	2	· · Nut	
16	859300	1	· Inlet pipe	
		X	· · COMPONENTS	SEE GROUP 2B
17		X	· CABLES AND TERMINALS	ALT. SEE GROUP 3
18	673580	X	· Rubber collar	
19	859450	1	· Rail	ALT.
20	860044	1	· Bridge	ALT.
21		2	SCREW	SEE GROUP 2B