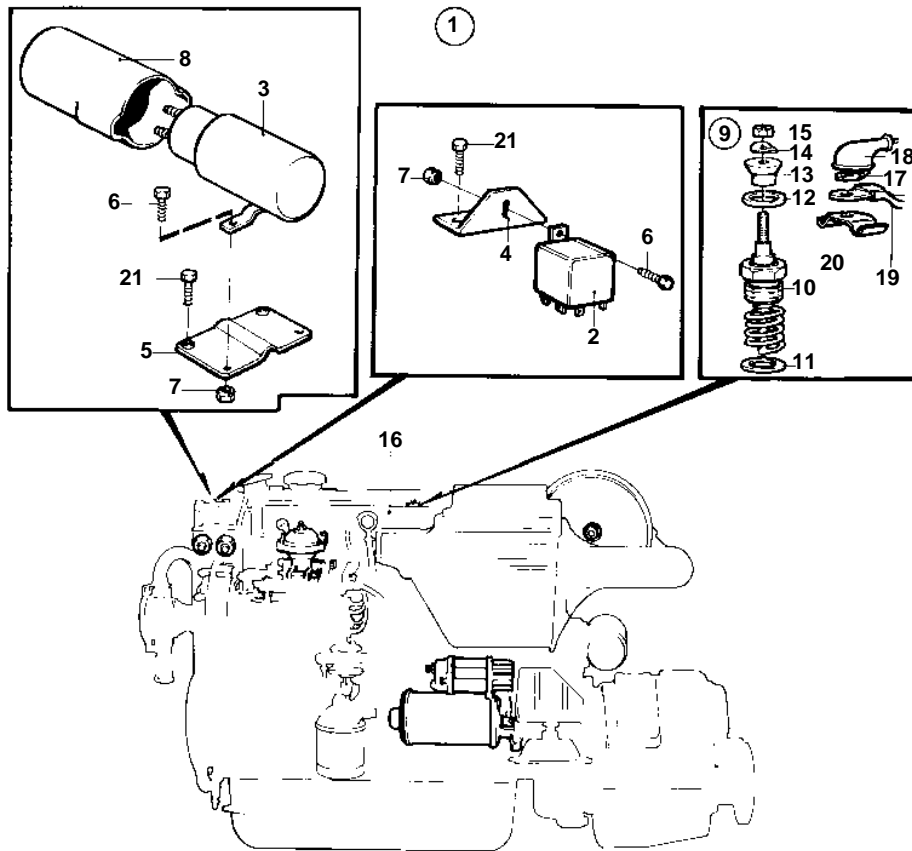


TMD41A,D41A,TAMD41A,AQAD41A,AD41A



9162

TMD41A,D41A,TAMD41A,AQAD41A,AD41A

REF	PART NO.	QTY	DESCRIPTION	NOTES
1	859302	1	Conversion kit	12V. FROM 2 TO 4 GLOWPLUGS.. FOR TMD41A, D41A, TAMD41A, AQAD41A,AD41A REPL BY 859676
3	1577375	1	· Relay	
5	859069	1	· Bracket	
6	956076	2	· Screw	
7	965483	2	· Nut	
8	1581123	1	· Cover	
9	876132	1	· Heater plug kit	
10		2	· · GLOW PLUG	
11	859211	2	· · Sealing ring	
12		2	· · O-RING	
13	859328	2	· · Thrust sleeve	
14	941905	2	· · Spring washer	
15	965483	2	· · Nut	
17		X	· CABLES AND TERMINALS	SEE GROUP 3
18	673580	X	· Rubber collar	
21		2	SCREW	SEE GROUP 2B