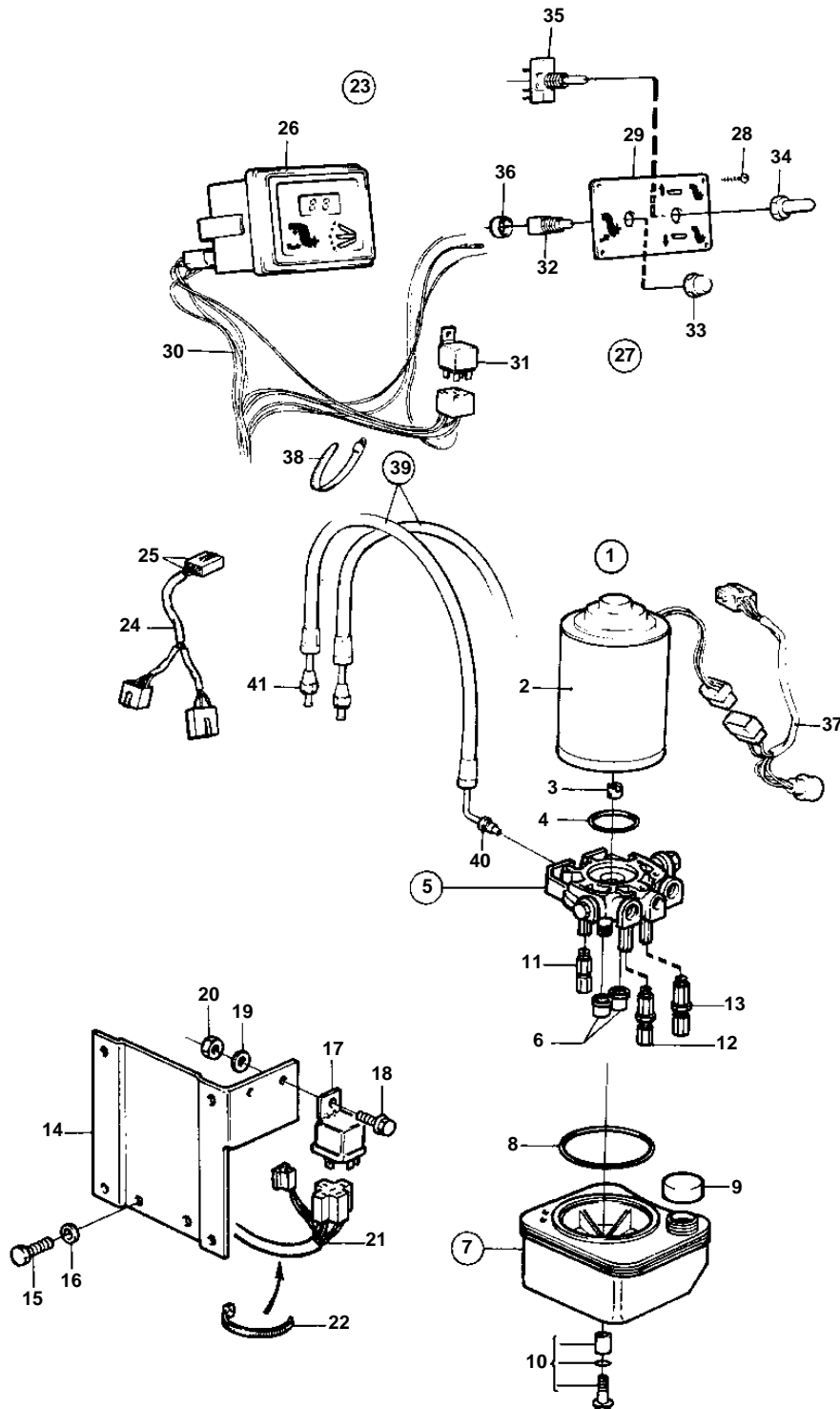


D41A,AQAD41A,AD41A,D41B,AD41B



10166

D41A,AQAD41A,AD41A,D41B,AD41B

REF	PART NO.	QTY	DESCRIPTION	NOTES
1	854346	1	Hydraulic pump kit	
2	854525	1	· Engine	
3	854526	1	· · Clutch	
4	854527	1	· · O-ring	
5	854528	1	· Valve housing	
6	854530	2	· · Filter	
7	854531	1	· Reservoir	
8	854532	1	· · O-ring	
9	854533	1	· · Cover	
10	854534	1	· · Small parts kit	
11	854535	1	· Relief unit	
12	854536	1	· High pressure unit	
13	854537	1	· Low pressure unit	
14	854438	1	· Bracket	
15	970945	2	· Screw	
16	941908	2	· Spring washer	
17	854357	2	· Relay	
18	948663	2	· Screw	
19	941905	2	· Spring washer	
20	955780	2	· Nut	
21		X	· CABLES AND TERMINALS	SEE GROUP 3
22	948210	1	Strip clamp	
23	853067	1	Instrument panel	FOR DUAL STATION.
24		1	· CABLE UNIT	
25		X	· · CABLES AND TERMINALS	SEE GROUP 3
26	828731	1	· Trimmer	
27	853866	1	· Control panel	
28	828647	4	· · Screw	
29	828739	1	· · Control panel	REPL BY 853866. GOLD COLOURED DECOR STRIPE
	853865	1	· · Control panel	WHITE COLOURED DECOR STRIPE
30		X	· · CABLES AND TERMINALS	SEE GROUP 3
31	853545	1	· · Relay kit	
32	828584	1	· · Switch	
33	828586	1	· · Button	
34	828743	1	· · Button	
35	828742	1	· · Switch	
36	828740	2	· · Spacer washer	
37	853032	1	Cable trunk	
	948294	X	· Receptacle housing	9-POL
	965822	X	· Cable terminal	3,5X1X2,5
	853498	X	· Receptacle housing	3-POL
	853521	X	· Cable terminal	FOR 853498
38	949666	X	Strip clamp	
39	852839	2	Hose	
40	87698	2	· Nipple	
41	954320	2	· Nut	