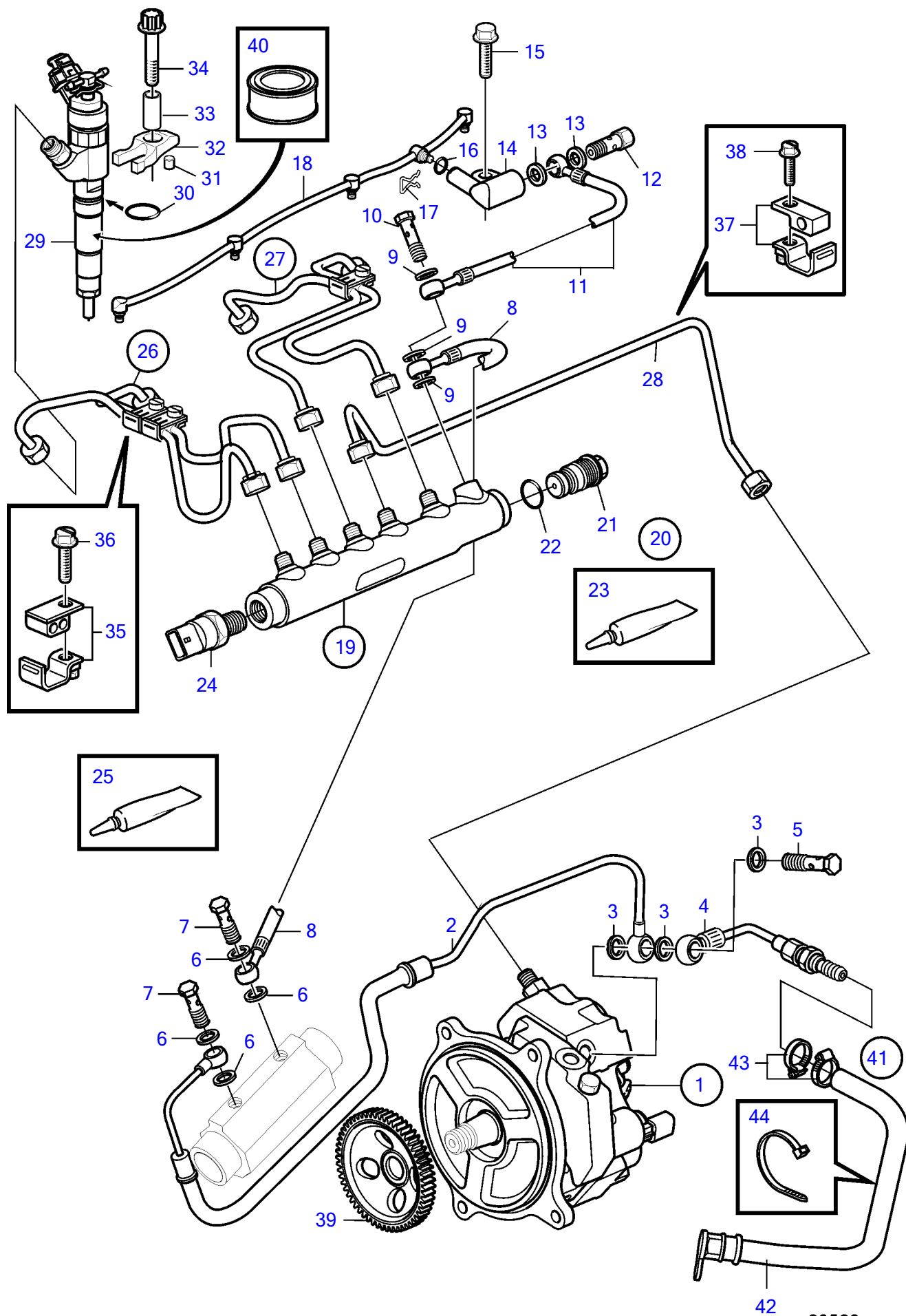


D4-180I-F, D4-225A-F, D4-225I-F, D4-260A-F, D4-260D-F, D4-260I-F



D4-180I-F, D4-225A-F, D4-225I-F, D4-260A-F, D4-260D-F, D4-260I-F

REF	PART NO.	QTY	DESCRIPTION	SEE SEC.	NOTES
1	889635	1	High-pressure pump		
			•	37238	
	3803633	1	High-pressure pump,, exch		
			•	37238	
2	3582997	1	Fuel hose		
3	11994	3	Gasket		
4	21822234	1	Return connection		
5	947975	1	Hollow screw		
6	20852763	4	Sealing ring		
7	969299	2	Hollow screw		
8	3584367	1	Fuel hose		
9	11994	3	Gasket		
10	947975	1	Hollow screw		
11	3584366	1	Fuel hose		
12	3584427	1	Pressure retaining v		
13	969011	2	Gasket		
14	3583123	1	Valve housing		
15	946173	1	Flange screw		
16	3589700	5	O-ring		
17	3583122	1	Lock spring		
18	3582802	1	Leak-off line		
19	3886062	1	Rail		
20	3884353	1	• Pressure limiting va		
21		1	• • Pressure limiting va		
22	3588336	1	• • • O-ring		
23	828250	1	• Lubricating grease		
			• Bulletin P-18-4-6	P-18-4-6-EN	Water resistant grease for grease gun
24		1	• Cable		
25	828250	1	• Lubricating grease		
			• Bulletin P-18-4-6	P-18-4-6-EN	Water resistant grease for grease gun
26	3588024	1	Delivery pipe kit		
27	3588025	1	Delivery pipe kit		
28	3582796	1	Delivery pipe		
29	3801295	4	Injector		
30	3583078	4	O-ring		
31	3583442	4	Support		
32	3582669	4	Clamp		
33	889789	4	Sleeve		
34	3586690	4	Six point screw		
35	3586006	3	Clamp		
36	3586005	3	Screw		
37	3588018	2	Clamp		
38	946544	2	Flange screw		
39	889749	1	Gear		
40	3588346	X	Lubricant		500G
41	21967719	1	Hose		
42	21945682	1	• Hose		
43	961664	2	• Hose clamp		
44	980464	1	• Cable tie		