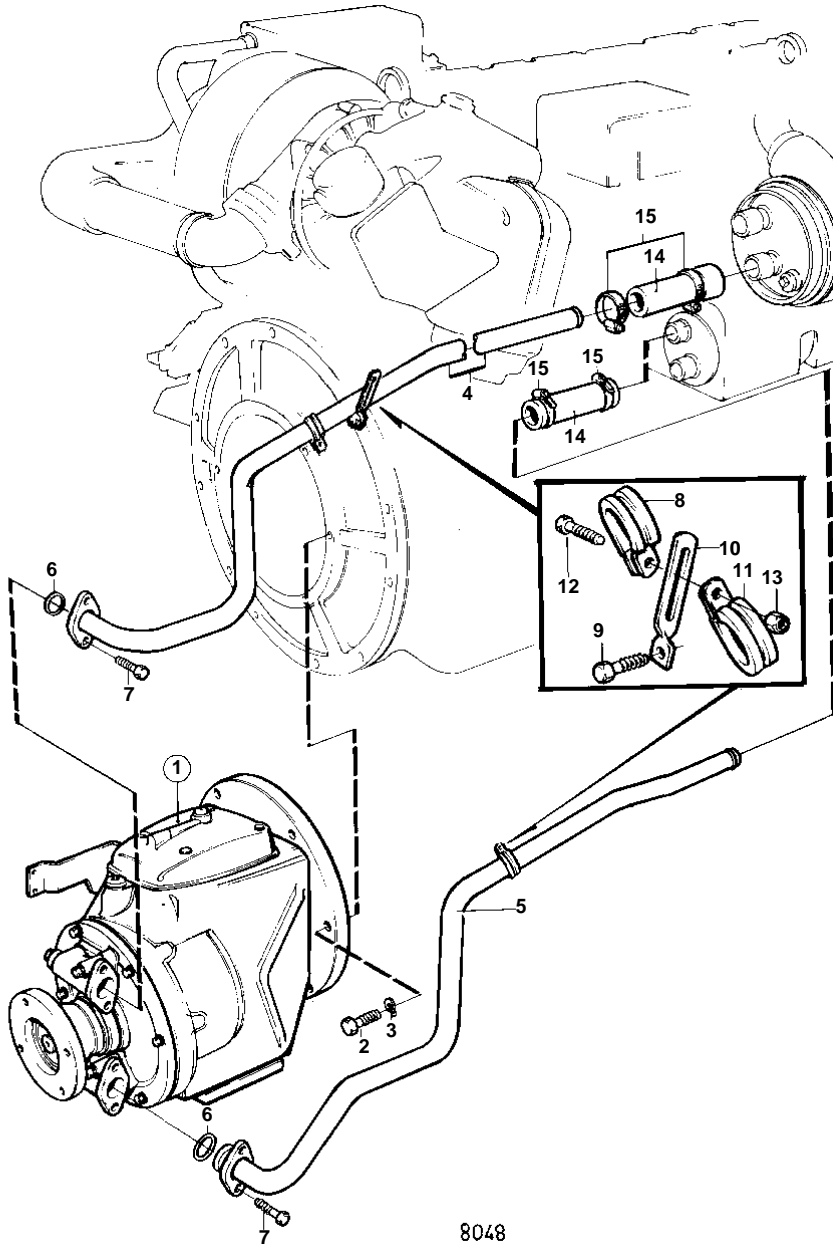


TMD31A, TMD31B



8048

TMD31A,TMD31B

| REF | PART NO. | QTY | DESCRIPTION | NOTES |
|-----|----------|-----|------------------------------|--|
| 1 | 853398 | 1 | Reversing gear COMPONENTS | SEE GROUP 4B |
| | 853399 | 1 | Reversing gear COMPONENTS | RATIO 2,63:1 SEE GROUP 4B |
| | 854902 | 1 | Reversing gear COMPONENTS | RATIO 1,93:1 SEE GROUP 4B |
| | 854903 | 1 | Reversing gear COMPONENTS | RATIO 2,63:1 SEE GROUP 4B |
| 2 | 946752 | 6 | Flange screw | |
| 3 | 941908 | 6 | Spring washer | |
| 4 | 860278 | 1 | Coolant pipe | (838818). REVERSE GEAR-HEAT EXCHANGER. |
| 5 | 860327 | 1 | Coolant pipe | (858397). OIL COOLER-REVERSE GEAR. |
| 6 | 842913 | 2 | Sealing ring | |
| 7 | 946544 | 4 | Flange screw | |
| 8 | 952635 | 1 | Clamp | |
| 9 | | 1 | SCREW | SEE GROUP 2A |
| 10 | 858587 | 1 | Bracket | |
| 11 | 952635 | 1 | Clamp | |
| 12 | 947542 | 1 | Screw | |
| 13 | 945407 | 1 | Flange nut | |
| 14 | 944386 | 2 | Hose | |
| 15 | 943475 | 4 | Hose clamp | |