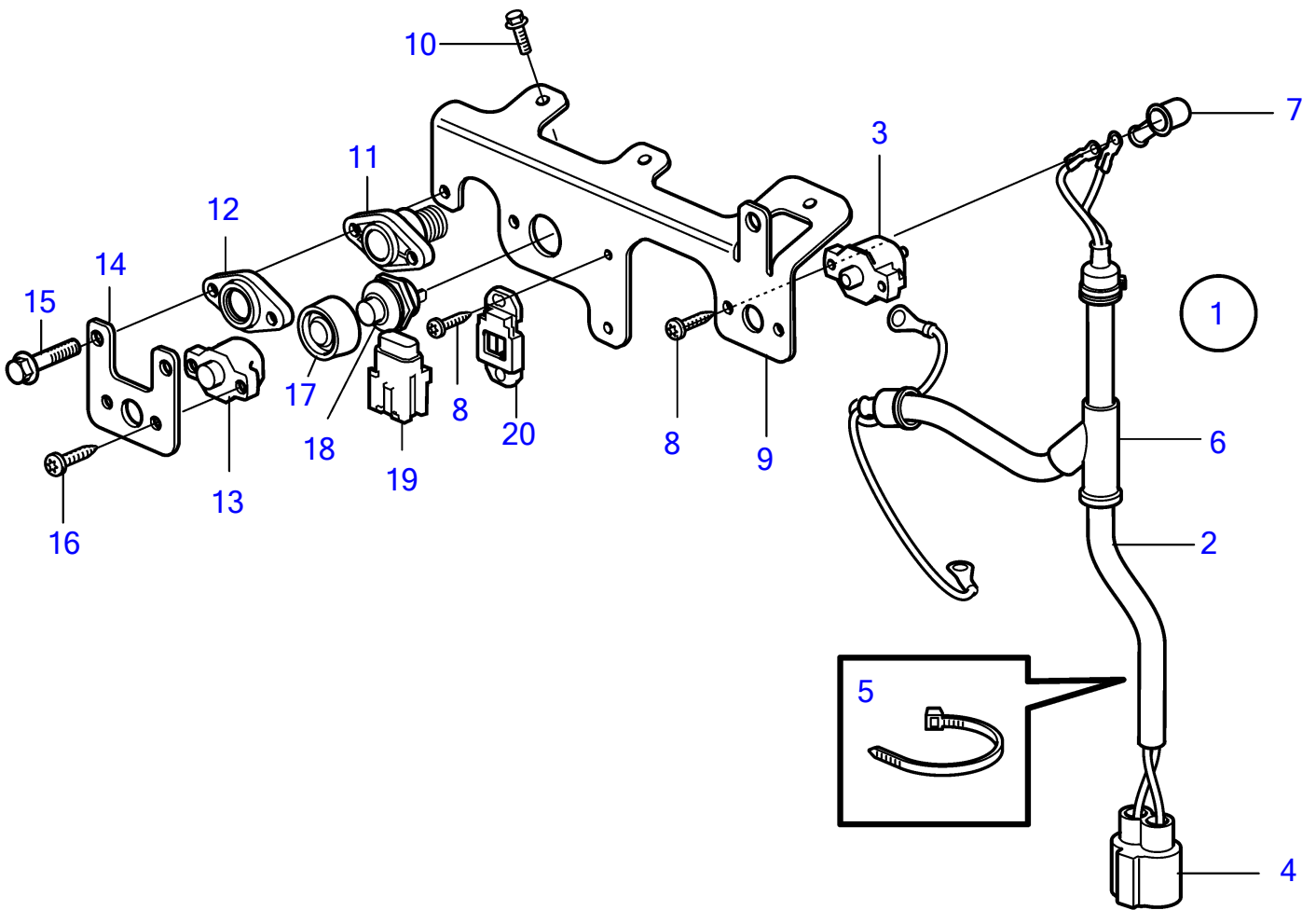


D3-140A-D, D3-140A-E, D3-140A-F, D3-170A-D, D3-170A-E, D3-170A-F, D3-200A-D, D3-200A-E, D3-200A-F, D3-220A-D, D3-220A-E, D3-220A-F



24845

D3-140A-D, D3-140A-E, D3-140A-F, D3-170A-D, D3-170A-E, D3-170A-F, D3-200A-D, D3-200A-E, D3-200A-F, D3-220A-D, D3-220A-E, D3-220A-F

REF	PART NO.	QTY	DESCRIPTION	NOTES
1	21334583	1	Wiring harness	
2	21312722	1	• Wiring harness	
3	3885972	1	• Automatic fuse	40AMP
4	3843097	1	Connector	
5	948211	3	Cable tie	
6		1	Protection	
7	829200	2	Protective cap	
8	3853620	2	Hexagon screw	
9	21328042	1	Bracket	
10	946501	3	Flange screw	M6x16mm
11	21847110	1	Stop button	
12	21738845	1	Cover	
13	856337	1	Automatic fuse	SOLAS
14	22127605	1	Bracket	SOLAS
15	946544	2	Flange screw	SOLAS
16	3853620	2	Hexagon screw	SOLAS
17	837533	1	Rubber cap	
18	843684	1	Button	
19	873852	1	Fuse holder	
20	873944	1	Retainer	