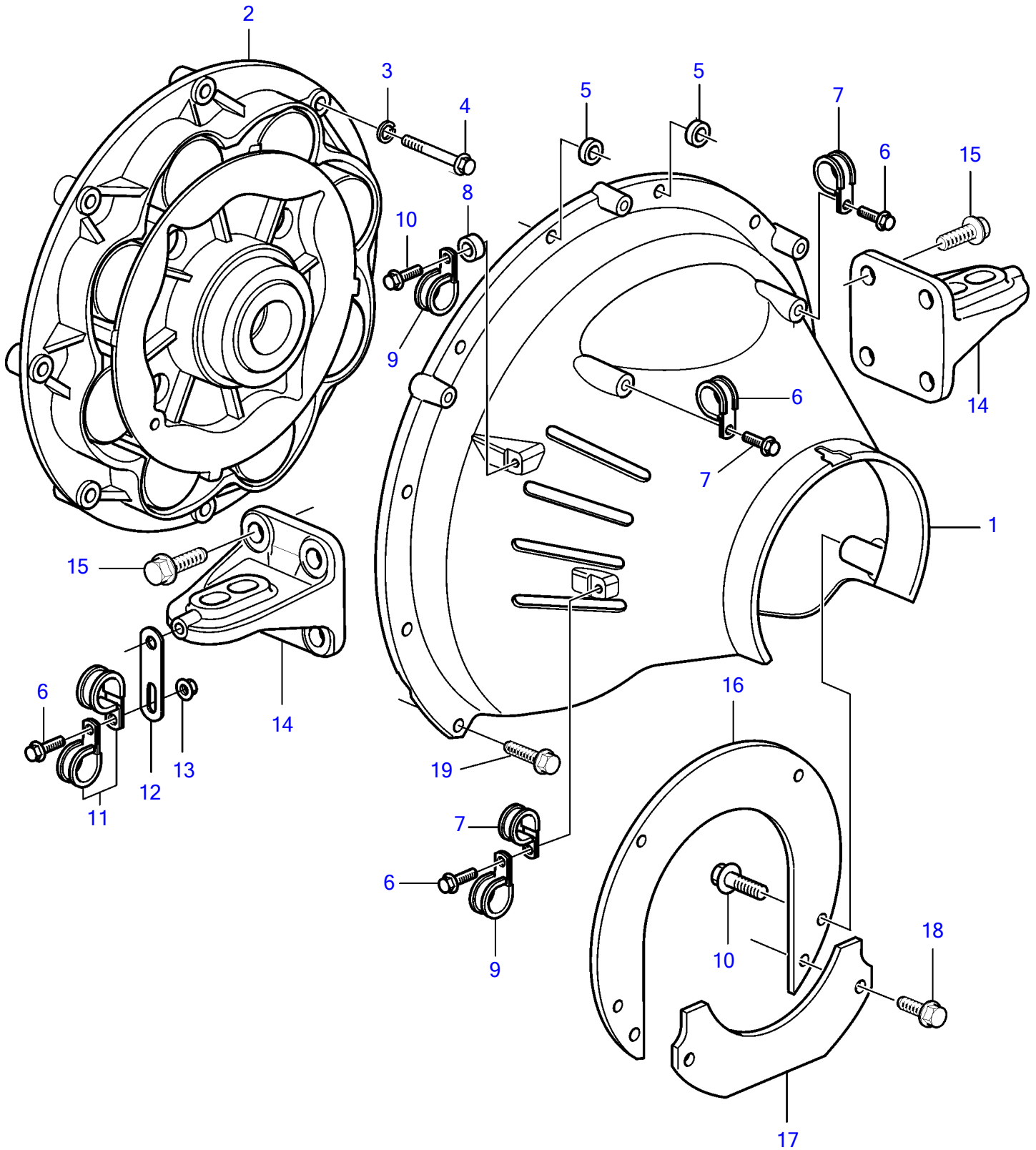


D13B-A MP, D13B-B MP, D13B-C MP, D13B-D MP, D13B-G MP, D13B-H MP



25992

D13B-A MP, D13B-B MP, D13B-C MP, D13B-D MP, D13B-G MP, D13B-H MP

REF	PART NO.	QTY	DESCRIPTION
1	21308282	1	Protecting casing
2	21196579	1	Flexible coupling
3	940280	8	Spring washer
4	965195	8	Flange screw
5	860699	2	Spacer sleeve
6	946440	5	Flange screw
7	949747	3	Clamp
8	843075	2	Spacer sleeve
9	1545432	2	Attaching clamp
10	945444	5	Flange screw
11	945081	2	Clamp
12	965537	1	Bracket
13	945408	1	Flange nut
14	21460251	2	Engine mountings
15	968435	8	Flange screw
16	21107014	1	Latch
17	21107016	1	Latch
18	946441	2	Flange screw
19	965185	8	Flange screw

7749490-21-36955

25992

Upd:2012-02-08

D13B-A MP, D13B-B MP, D13B-C MP, D13B-D MP, D13B-G MP, D13B-H MP