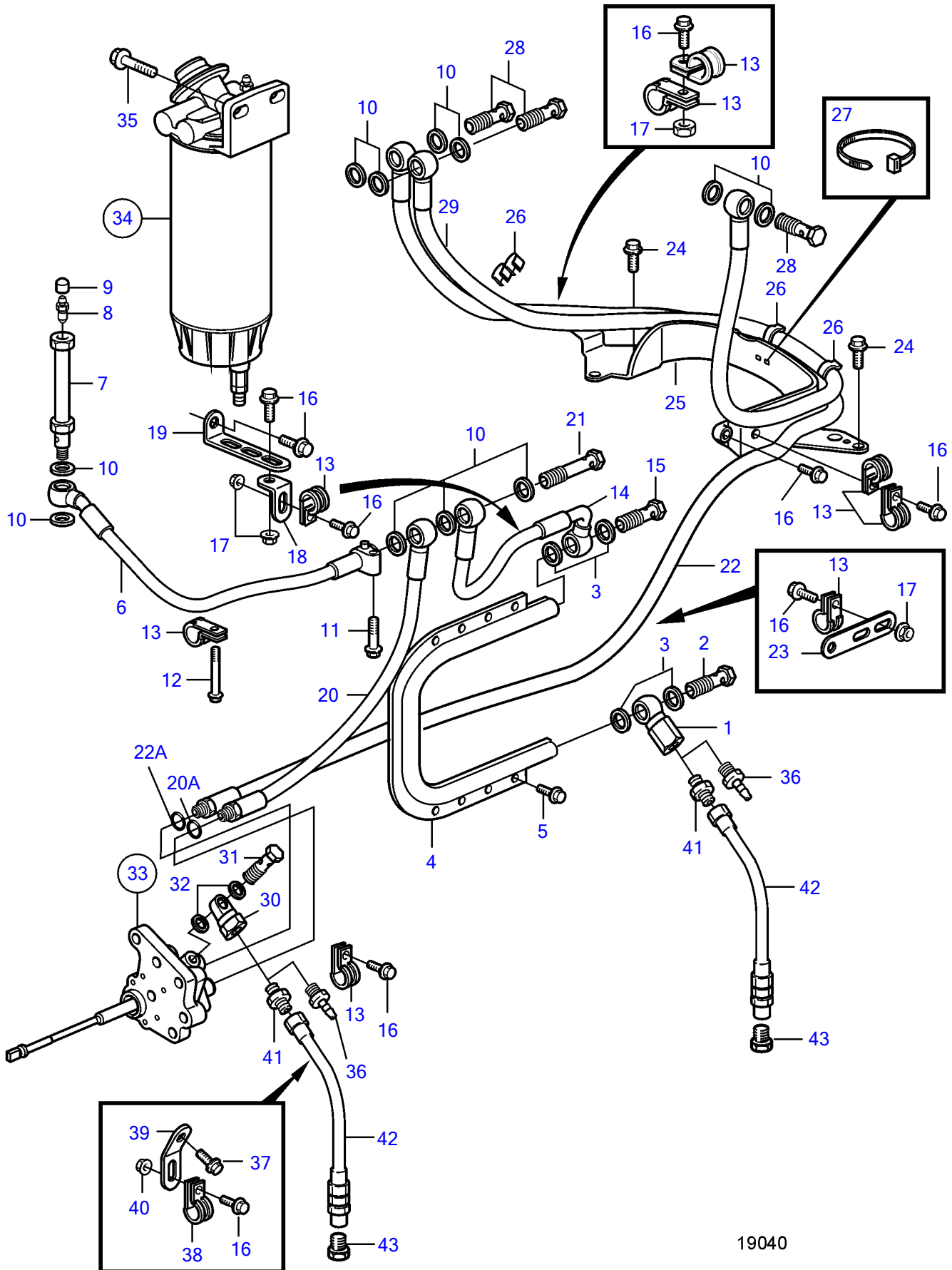


D12D-A MG, D12D-E MG



19040

D12D-A MG, D12D-E MG

REF	PART NO.	QTY	DESCRIPTION	SEE SEC.	NOTES
1	3828976	1	Check valve		
2	25167	1	Hollow screw		
3	969011	4	Gasket		
4	8170282	1	Radiator		For electronic control unit.
5	946934	8	Flange screw		
6	3838162	1	Fuel hose		
7	3828271	1	Hollow screw		
8	20548012	1	Faucet		(1330191)
9	20547976	1	Protecting cover		(656456)
10	982724	11	Gasket		
11	965183	1	Flange screw		
12	965181	1	Flange screw		
13	949747	8	Clamp		
14	3832768	1	Fuel hose		
15	25167	1	Hollow screw		
16	946440	4	Flange screw		
17	945408	4	Flange nut		
18	965553	1	Bracket		
19	965562	1	Bracket		
20	3826591	1	Fuel hose		
20A	976971	1	• O-ring		
21	8148244	1	Hollow screw		
22	3837665	1	Fuel hose		
22A	976971	1	• O-ring		
23	965541	1	Bracket		
24	946502	2	Flange screw		
25	(3837245)	1	Bracket		Obsolete part
26	9205207	3	Retainer		
27	948211	4	Cable tie		
28	993596	3	Hollow screw		
29	3837666	1	Fuel hose		
30	3827418	1	Banjo nipple		
31	74033	1	Hollow screw		
32	947620	2	Gasket		
33	3092460	1	Fuel pump		SN-240248, Repl by 20440371
			•		
			•	21838	
	20440371	1	Fuel pump		SN240249-, Repl by 20752310
			•		
			•	21839	
	20752310	1	Fuel pump		
			•		
			•	4621	
34	3817516	1	Fuel filter		Early type, Repl by 3885572
	3885572	1	Fuel filter		Late type
			•	35893	
			•	35073	
35	946472	2	Flange screw		
36	3825000	2	Hose nipple		Alt
37	945444	1	Flange screw		
38	1545432	1	Attaching clamp		
39	965571	1	Bracket		
40	945408	1	Flange nut		
41	977677	2	Nipple		Alt
42	3826595	2	Fuel hose		Alt
43	22753	2	Nipple		Alt