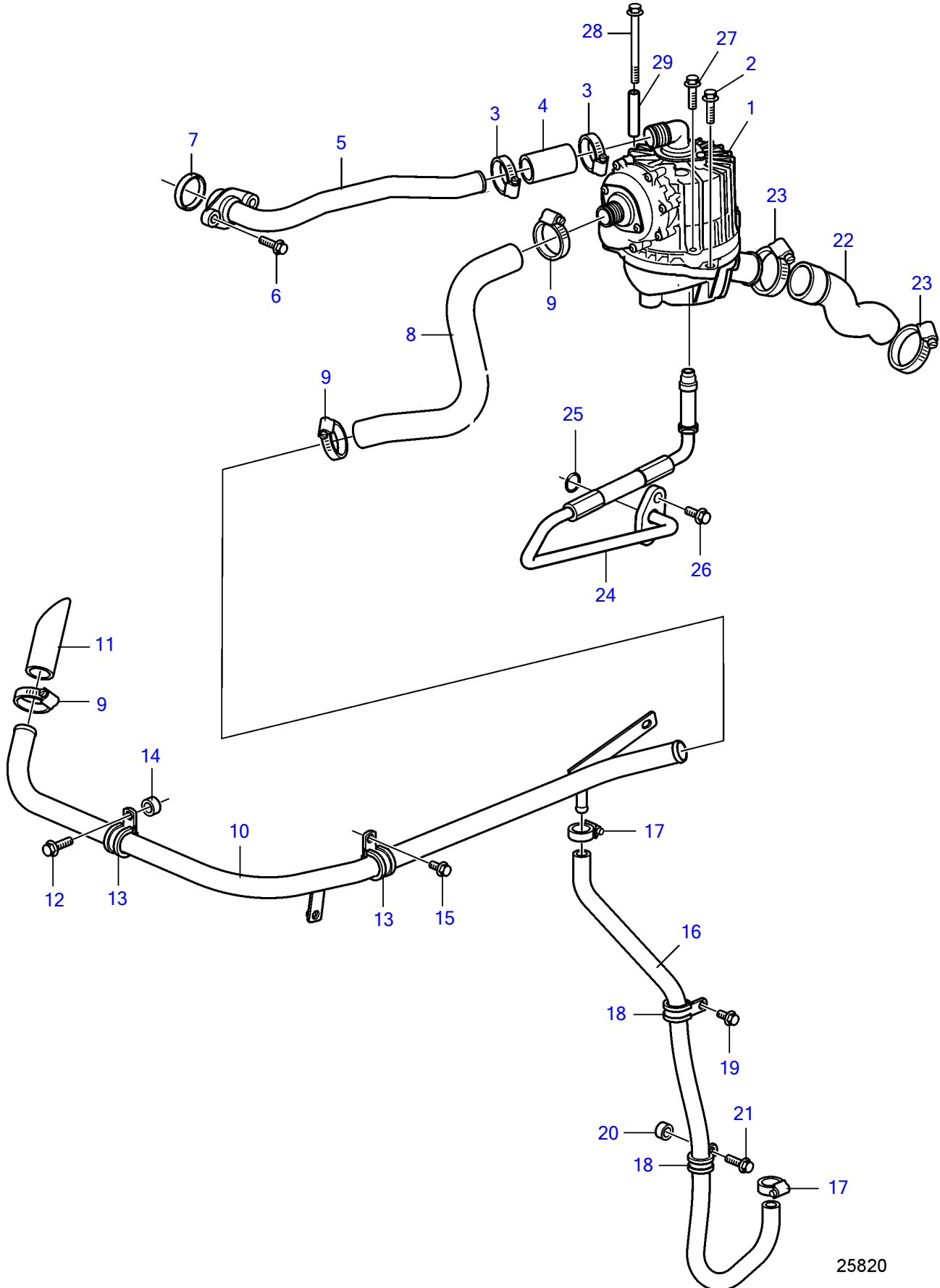


D11A-A, D11A-B, D11A-C, D11A-D



25820

D11A-A, D11A-B, D11A-C, D11A-D

REF	PART NO.	QTY	DESCRIPTION	NOTES
1	20707295	1	Separator	
2	946671	2	Flange screw	
3	943477	2	Hose clamp	
4	(20711377)	1	Hose	Obsolete part
5	40005746	1	Pipe	
6	945444	2	Flange screw	
7	20555696	1	Sealing ring	
8	3889437	1	Hose	
9	943475	3	Hose clamp	
10	21118819	1	Pipe	
11	944386	1	Rubber hose	
12	946329	2	Flange screw	
13	947827	2	Clamp	
14	977412	1	Spacer sleeve	
15	946440	1	Flange screw	
16	943707	1	Hose	
17	943471	2	Hose clamp	
18	1545432	2	Attaching clamp	
19	946440	1	Flange screw	
20	948871	1	Spacer washer	
21	945444	1	Flange screw	
22	3886236	1	Hose	
23	943475	2	Hose clamp	
24	21441010	1	Oil hose	
25	968007	1	O-ring	
26	946173	2	Flange screw	
27	948356	2	Flange screw	
28	965183	1	Flange screw	
29	822791	1	Spacer sleeve	