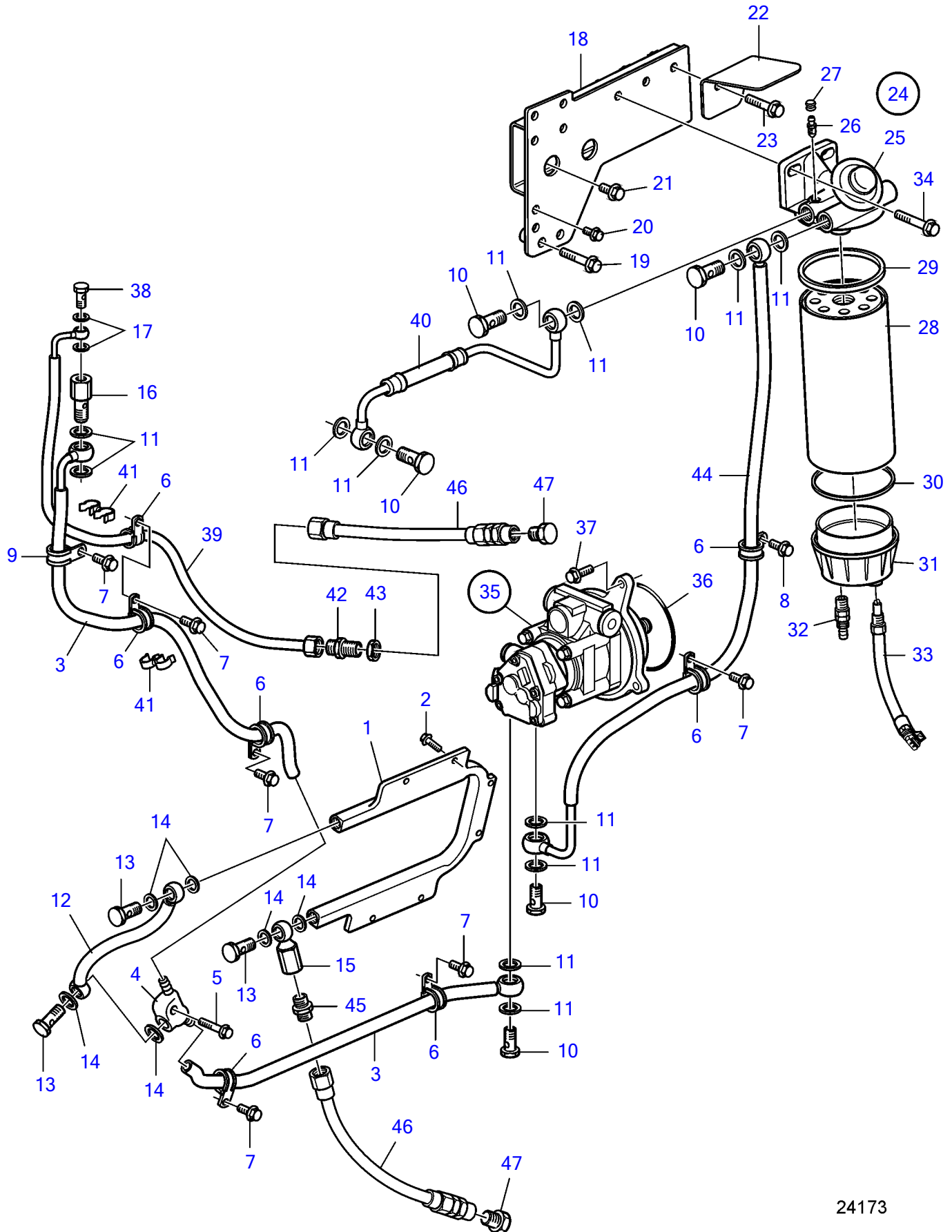


D11A-A, D11A-B, D11A-D



24173

D11A-A, D11A-B, D11A-D

REF	PART NO.	QTY	DESCRIPTION	NOTES
1	20562394	1	Radiator	
2	975979	6	6 point socket screw	
3	3883149	1	Fuel hose	
4		1	• Connector	
5	947760	1	Flange screw	
6	949747	6	Clamp	
7	946440	7	Flange screw	
8	967949	1	Flange screw	
9	978869	1	Clamp	
10	941686	4	Hollow screw	
11	982724	11	Gasket	
12	3883148	1	Fuel hose	
13	25167	3	Hollow screw	
14	982723	6	Gasket	
15	3828976	1	Check valve	
16	20450468	1	Overflow valve	
17	982721	2	Gasket	
18	3817755	1	Bracket	
19	965186	2	Flange screw	
20	946441	2	Flange screw	
21	946440	2	Flange screw	
22	3841779	1	Bracket	
23	965220	1	Flange screw	
24	3885572	1	Fuel filter	
25		1	• Filter housing	
26	20548012	1	• Faucet	
27	20547976	1	• Protecting cover	
28	3817517	1	• Fuel filter kit	
29		2	• • Gasket	
30		1	• Gasket	
31	21283474	1	• Bowl	
32	949918	1	• Shut-off cock	
33	3885070	1	• Sensor	
34	965221	2	Flange screw	
35	20902690	1	Tandem pump	With servo pump., 16L/min
	21186656	1	Tandem pump	With servo pump., 16L/min, SN1090227177-
	20902692	1	Tandem pump	With servo pump., 25L/min
	21186657	1	Tandem pump	With servo pump., 25L/min, SN1090227177-
	3594874	1	Fuel pump	Without servo pump.
36	977030	1	O-ring	
37	975199	3	Flange screw	
38	48634	1	Hollow screw	
39	3889777	1	Air vent pipe	
40	3595181	1	Fuel hose	
41	3121512	3	Retainer	
42	963948	1	Nipple	
43	957019	1	Hexagon nut	
44	3883150	1	Fuel hose	
45	977677	2	Nipple	
46	3826595	2	Fuel hose	
47	(943582)	2	Plug	Obsolete part