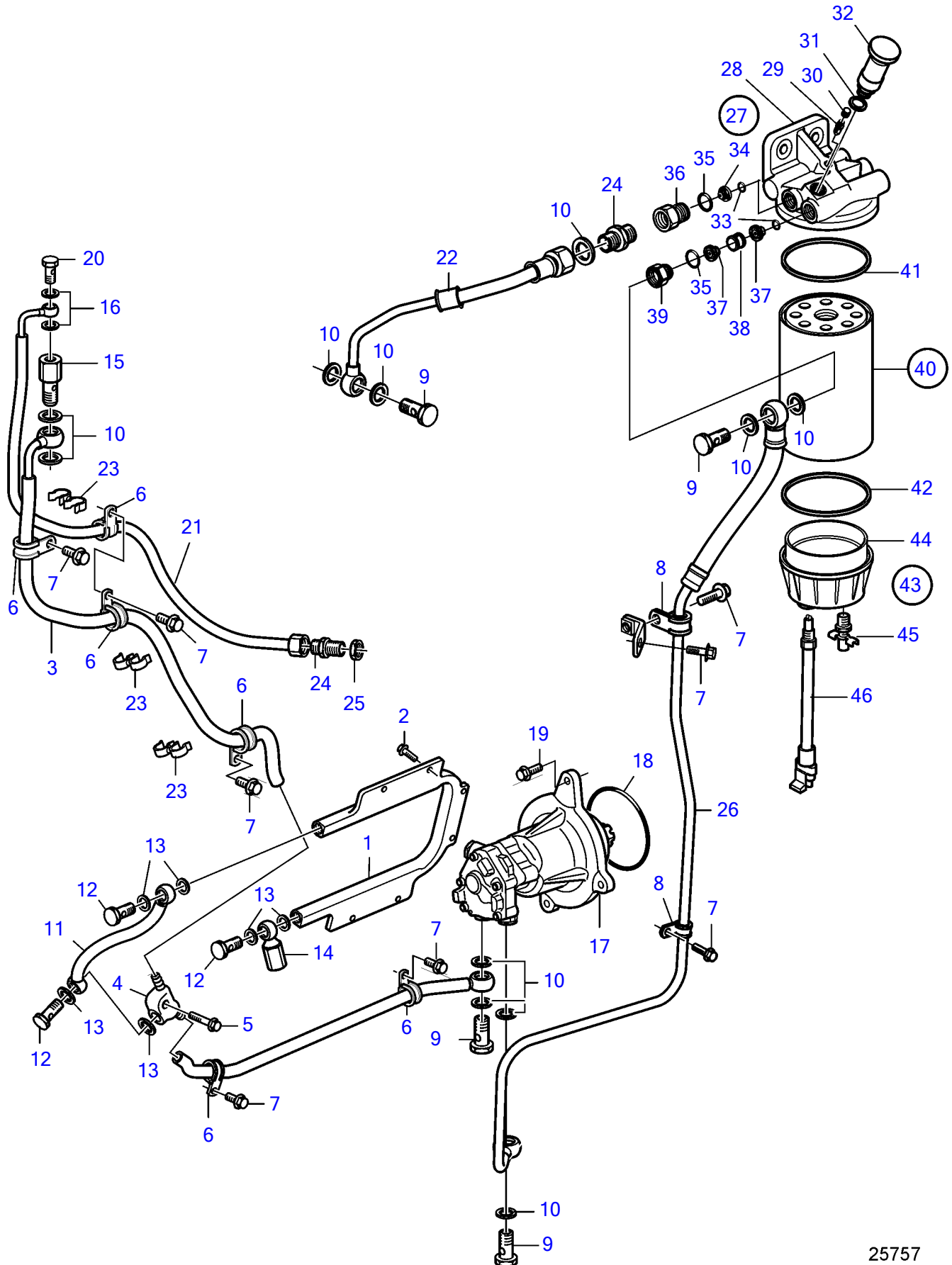


D11A-C, D11A-D



D11A-C, D11A-D

REF	PART NO.	QTY	DESCRIPTION
1	20562394	1	Radiator
2	975979	6	6 point socket screw
3	3883149	1	Fuel hose
4		1	• Connector
5	947760	1	Flange screw
6	984943	5	Clamp
7	946440	8	Flange screw
8	990178	2	Attaching clamp
9	941686	4	Hollow screw
10	982724	11	Gasket
11	3883148	1	Fuel hose
12	25167	3	Hollow screw
13	982723	6	Gasket
14	3828976	1	Check valve
15	20450468	1	Overflow valve
16	982721	2	Gasket
17	21639413	1	Fuel pump
18	977030	1	O-ring
19	975199	3	Flange screw
20	48634	1	Hollow screw
21	3889777	1	Air vent pipe
22	3889039	1	Fuel hose
23	3121512	3	Retainer
24	963948	1	Nipple
25	957019	1	Hexagon nut
26	3883150	1	Fuel hose
27	21303231	1	Fuel filter housing
28		1	• Fuel filter housing
29	20548012	1	• Faucet, air venting
30	20547976	1	• Protecting cover
31	947622	1	• Gasket
32	3837393	1	• Hand pump
33	976971	2	• O-ring
34	21113993	1	• Check valve
35	1526474	2	• O-ring
36	21140340	1	• Nipple
37	244834	2	• Valve
38	3964717	1	• Spacer sleeve
39	8148328	1	• Nipple
40	3809721	1	Fuel filter insert
41		1	• Gasket
42		1	• Gasket
43	21283474	1	Bowl
44		1	• Bowl
45	21279867	1	• Drain valve
46	3885070	1	• Sensor