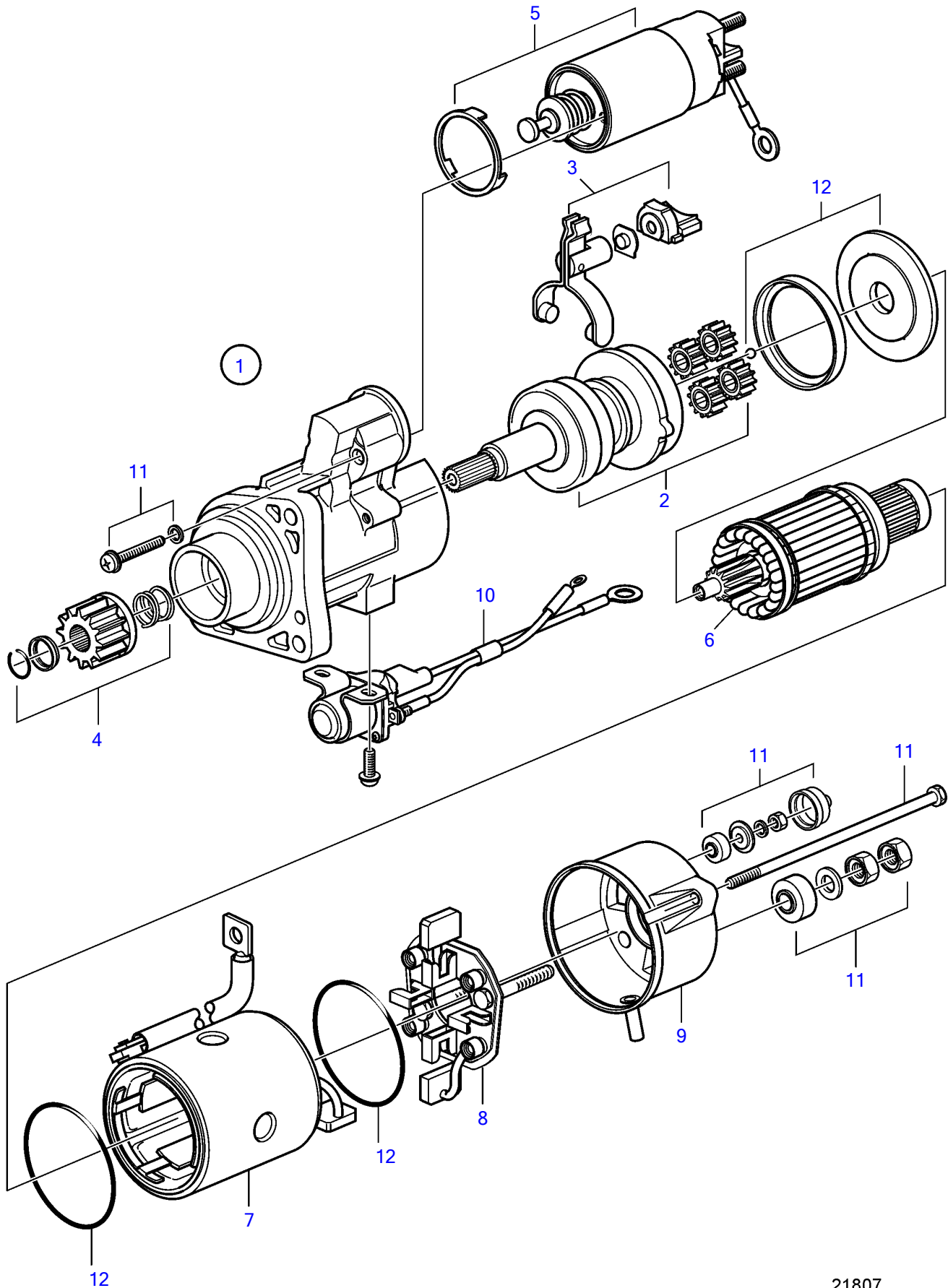


D11A-A, D11A-B, D11A-C, D11A-D



D11A-A, D11A-B, D11A-C, D11A-D

REF	PART NO.	QTY	DESCRIPTION	NOTES
1	3803847	1	Starter motor, exch	Replaced by 3801287
	3801287	1	Starter motor, exch	
2		1	▪ Shaft	
3		1	▪ Lever	
4	20491053	1	▪ Pinion	
5	3818887	1	▪ Starter solenoid	
6		1	▪ Rotor	
7		1	▪ Stator	
8	3818891	1	▪ Carbon brush retaine	
9		1	▪ Bearing shield	
10	3818901	1	▪ Starter relay	
11	3818906	1	▪ Screw kit	
12	3818908	1	▪ Gasket kit	