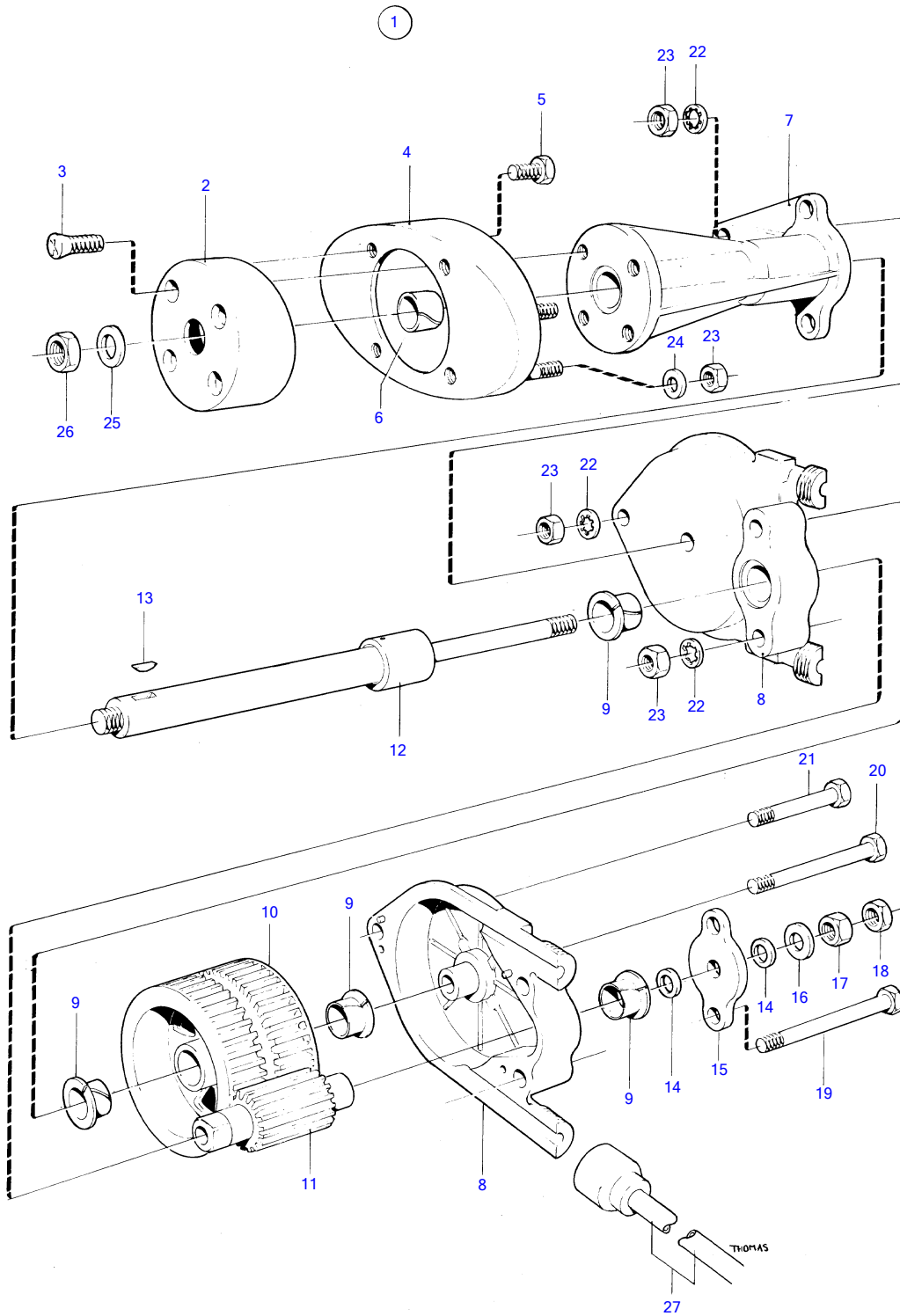


AD30A, AQAD30A, MD30A, TAMD30A, TMD30A



3690

AD30A, AQAD30A, MD30A, TAMD30A, TMD30A

| REF | PART NO. | QTY | DESCRIPTION      | NOTES         |
|-----|----------|-----|------------------|---------------|
| 1   | 850809   | 1   | Steering head    |               |
| 2   |          | 1   | • MOUNTING PLATE |               |
| 3   | 941462   | 4   | • Screw          | OBSOLETE PART |
| 4   |          | 1   | • BRACKET        |               |
| 5   | 955655   | 4   | • Hexagon screw  |               |
| 6   | 839724   | 1   | • Bushing        | OBSOLETE PART |
| 7   |          | 1   | • BRACKET        |               |
| 8   |          | 2   | • HOUSING        |               |
| 9   | 828155   | 4   | • Bushing        | OBSOLETE PART |
| 10  |          | 1   | • GEAR           |               |
| 11  |          | 1   | • GEAR           |               |
| 12  |          | 1   | • SHAFT          |               |
| 13  | 835059   | 1   | • Key            |               |
| 14  | 839725   | 2   | • Slide washer   | OBSOLETE PART |
| 15  |          | 1   | • THRUST PLATE   |               |
| 16  | 940097   | 1   | • Washer         |               |
| 17  | 955848   | 1   | • Hexagon nut    | OBSOLETE PART |
| 18  | 955858   | 1   | • Nut            | OBSOLETE PART |
| 19  | 955670   | 2   | • Screw          | OBSOLETE PART |
| 20  | 955668   | 1   | • Hexagon screw  | OBSOLETE PART |
| 21  | 955665   | 1   | • Screw          | OBSOLETE PART |
| 22  | 955949   | 4   | • Toothed washer | OBSOLETE PART |
| 23  | 955847   | 8   | • Hexagon nut    |               |
| 24  | 955894   | 4   | • Washer         |               |
| 25  | 960145   | 1   | • Washer         |               |
| 26  | 940154   | 1   | • Hexagon nut    |               |
| 27  | 839727   | 1   | • Plastic pipe   | OBSOLETE PART |