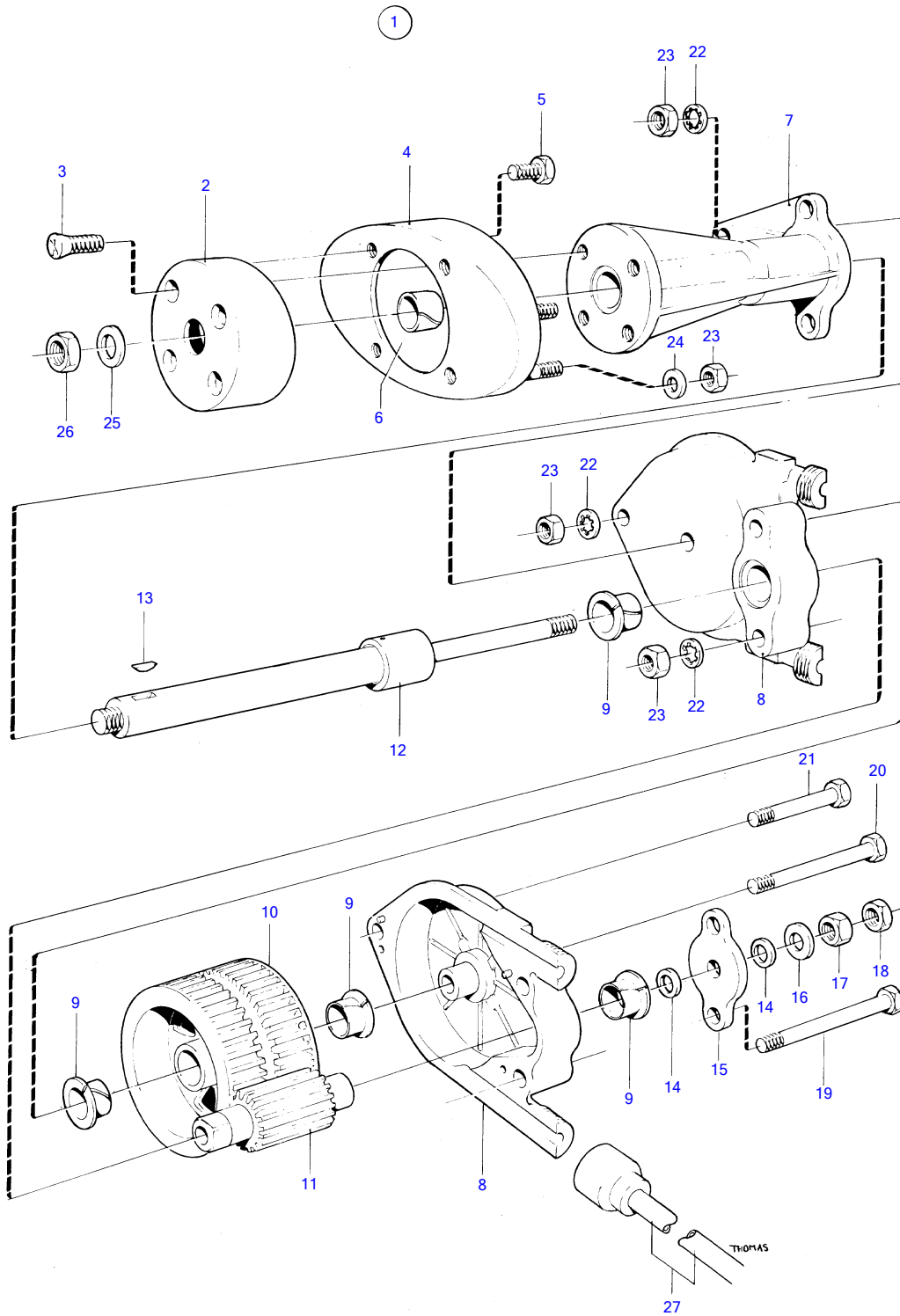


AD30A, AQAD30A, MD30A, TAMD30A, TMD30A



3690

AD30A, AQAD30A, MD30A, TAMD30A, TMD30A

| REF | PART NO. | QTY | DESCRIPTION | NOTES |
|-----|----------|-----|------------------|---------------|
| 1 | 850809 | 1 | Steering head | |
| 2 | | 1 | • MOUNTING PLATE | |
| 3 | 941462 | 4 | • Screw | OBSOLETE PART |
| 4 | | 1 | • BRACKET | |
| 5 | 955655 | 4 | • Hexagon screw | |
| 6 | 839724 | 1 | • Bushing | OBSOLETE PART |
| 7 | | 1 | • BRACKET | |
| 8 | | 2 | • HOUSING | |
| 9 | 828155 | 4 | • Bushing | OBSOLETE PART |
| 10 | | 1 | • GEAR | |
| 11 | | 1 | • GEAR | |
| 12 | | 1 | • SHAFT | |
| 13 | 835059 | 1 | • Key | |
| 14 | 839725 | 2 | • Slide washer | OBSOLETE PART |
| 15 | | 1 | • THRUST PLATE | |
| 16 | 940097 | 1 | • Washer | |
| 17 | 955848 | 1 | • Hexagon nut | OBSOLETE PART |
| 18 | 955858 | 1 | • Nut | OBSOLETE PART |
| 19 | 955670 | 2 | • Screw | OBSOLETE PART |
| 20 | 955668 | 1 | • Hexagon screw | OBSOLETE PART |
| 21 | 955665 | 1 | • Screw | OBSOLETE PART |
| 22 | 955949 | 4 | • Toothed washer | OBSOLETE PART |
| 23 | 955847 | 8 | • Hexagon nut | |
| 24 | 955894 | 4 | • Washer | |
| 25 | 960145 | 1 | • Washer | |
| 26 | 940154 | 1 | • Hexagon nut | |
| 27 | 839727 | 1 | • Plastic pipe | OBSOLETE PART |