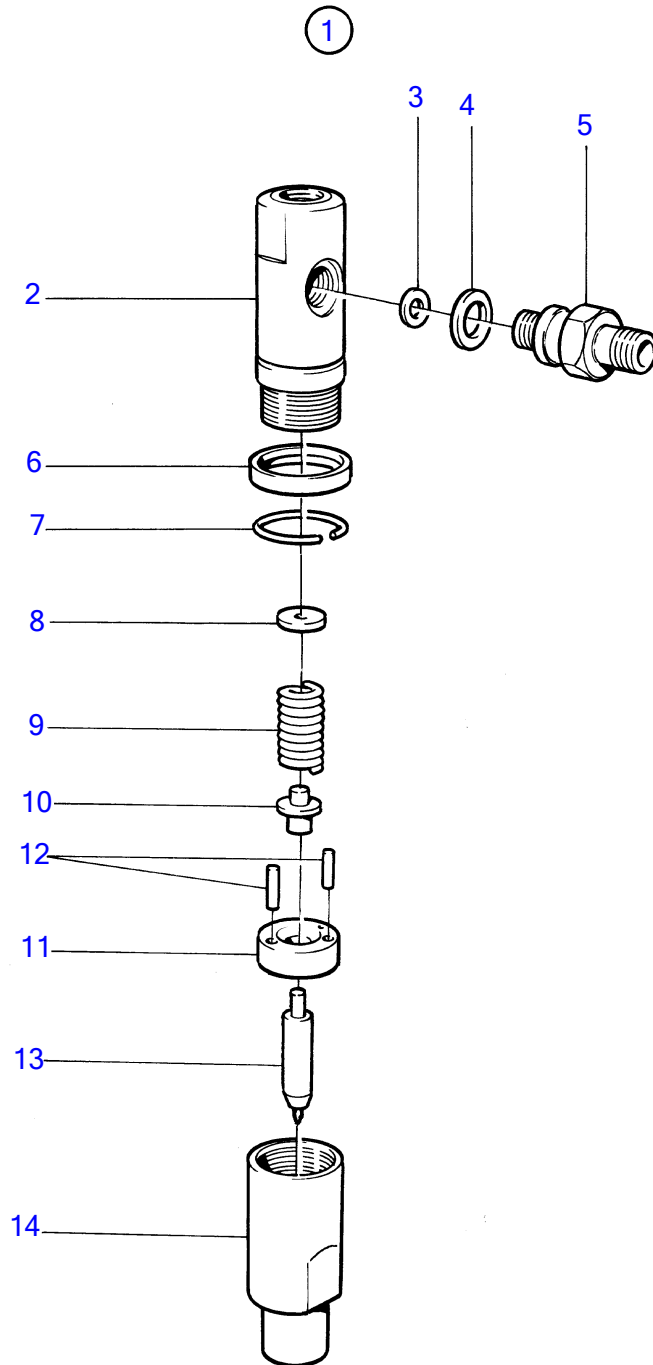


AD30A, AQAD30A, MD30A, TAMD30A, TMD30A



4680

AD30A, AQAD30A, MD30A, TAMD30A, TMD30A

REF	PART NO.	QTY	DESCRIPTION	NOTES
1	1542155	1	Injector	
	3803239	1	Injector, exch, exch	
2		1	• NOZZLE HOLDER BODY	
3	844294	1	• Washer	
4	844295	1	• Sealing ring	
5	844296	1	• Fitting	
6	844297	1	• Intermediate ring	
7	844298	1	• Tensioning ring	
8	244797	1	• Shim, SHIM	(844299)
				TH = 1,000 MM ALT
	846960	1	• • Adjusting washer, SHIM	(844300)
				TH = 1,025 MM ALT
	846945	1	• • • Adjusting washer, SHIM	(844301)
				TH = 1,050 MM ALT
	846961	1	• • • • Adjusting washer, SHIM	(844302)
				TH = 1,075 MM ALT
	844303	1	• • • • • Adjusting washer	TH = 1,100 MM ALT
	244789	1	• • • • • Shim, SHIM	(6212418)
				TH = 1,320 MM ALT
	846947	1	• • • • • • Adjusting washer, SHIM	(844342)
				TH = 1,150 MM ALT
	846963	1	• • • • • • • Adjusting washer, SHIM	(844343)
				TH = 1,175 MM ALT
	244799	1	• • • • • • • Shim, SHIM	(844304)
				TH = 1,200 MM ALT
	6212417	1	• • • • • • • • Adjusting washer, SHIM	(844305)
				TH = 1,225 MM ALT
	244805	1	• • • • • • • • Shim, SHIM	(846948)
				TH = 1,250 MM ALT
	244807	1	• • • • • • • • • Shim, SHIM	(846964)
				TH = 1,280 MM ALT
	844308	1	• • • • • • • • • • Adjusting washer	TH = 1,300 MM ALT
	244789	1	• • • • • • • • • • Shim	(846965)
				TH = 1,320 MM ALT
	858908	1	• • • • • • • • • • • Adjusting washer, SHIM	(846950)
				TH = 1,340 MM ALT
	846966	1	• • • • • • • • • • • • Adjusting washer, SHIM	(844311)
				TH = 1,375 MM ALT
	244800	1	• • • • • • • • • • • • Shim, SHIM	(844312)
				TH = 1,400 MM ALT
	6212393	1	• • • • • • • • • • • • • Adjusting washer, SHIM	(844313)
				TH = 1,425 MM ALT
	244790	1	• • • • • • • • • • • • • • Shim, SHIM	(846952)
				TH = 1,440 MM ALT
	244802	1	• • • • • • • • • • • • • • Shim, SHIM	(844315)
				TH = 1,475 MM ALT
	844316	1	• • • • • • • • • • • • • • • Adjusting washer	TH = 1,500 MM ALT
	244791	1	• • • • • • • • • • • • • • • Shim, SHIM	(846968)
				TH = 1,525 MM ALT
	846954	1	• • • • • • • • • • • • • • • • Adjusting washer, SHIM	(844318)
				TH = 1,550 MM ALT
	846969	1	• • • • • • • • • • • • • • • • • Adjusting washer, SHIM SHIM	TH = 1,575 MM ALT
	244793	1	• • • • • • • • • • • • • • • • • Shim	(844320)
				TH = 1,600 MM ALT
	846970	1	• • • • • • • • • • • • • • • • • • Adjusting washer	TH = 1,625 MM ALT
	244806	1	• • • • • • • • • • • • • • • • • • Shim, SHIM	(846956)
				TH = 1,640 MM ALT
	244803	1	• • • • • • • • • • • • • • • • • • Shim, SHIM	(844323)
				TH = 1,675 MM ALT
	858905	1	• • • • • • • • • • • • • • • • • • • Adjusting washer, SHIM	(844324)
				TH = 1,700 MM ALT
	244794	1	• • • • • • • • • • • • • • • • • • • Shim, SHIM	(844325)
				TH = 1,725 MM ALT

AD30A, AQAD30A, MD30A, TAMD30A, TMD30A

REF	PART NO.	QTY	DESCRIPTION	NOTES
	846957	1	..... Adjusting washer	TH = 1,750 MM ALT
	846975	1	..... Adjusting washer, SHIM	(844327)
				TH = 1,775 MM ALT
	844328	1	..... Adjusting washer	TH = 1,800 MM ALT
	6212420	1	..... Adjusting washer, SHIM	(844329)
				TH = 1,825 MM ALT
	846958	1	..... Adjusting washer, SHIM	(844330)
				TH = 1,850 MM ALT
	244813	1	..... Adjusting washer, SHIM	(846977)
				TH = 1,875 MM ALT
	844332	1	..... Adjusting washer	TH = 1,900 MM ALT
	244795	1	..... Shim, SHIM	(846798)
				TH = 1,920 MM ALT
	846959	1	..... Adjusting washer, SHIM	(844334)
				TH = 1,950 MM ALT
	846980	1	..... Adjusting washer, SHIM	(844335)
				TH = 1,975 MM ALT
9	844336	1	..... Spring	
10	844337	1	..... Push rod	
11	844338	1	..... Washer	
12	844339	2	..... Locating pin	
13	1542303	1	..... Nozzle	
14	844340	1	..... Nut	