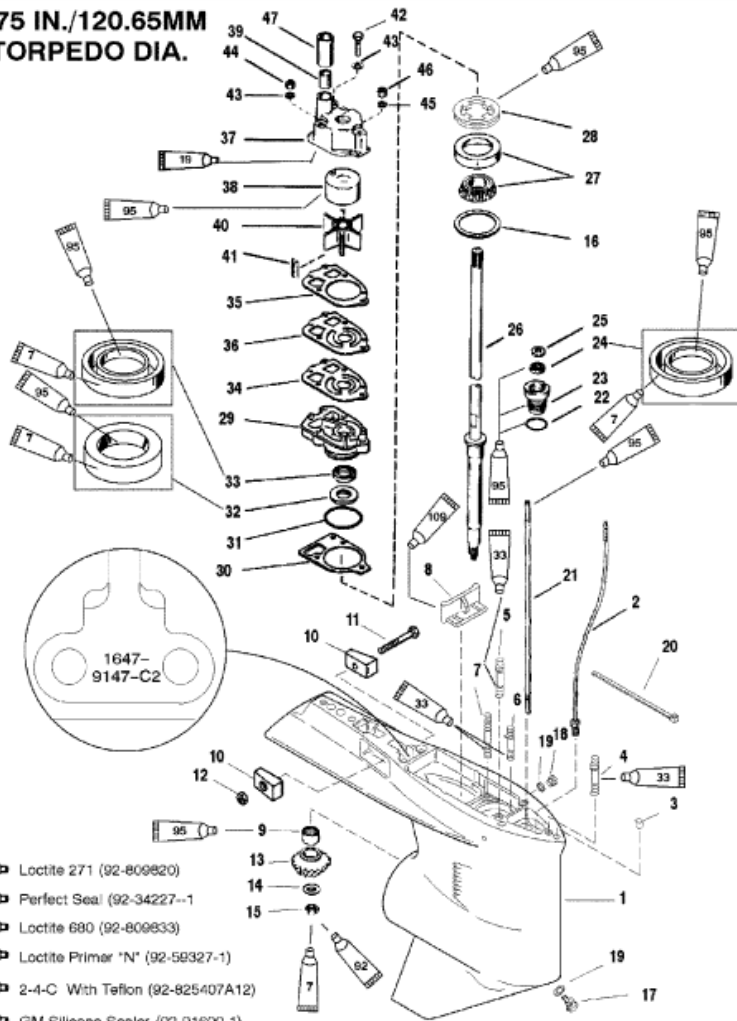


**4.75 IN./120.65MM
 TORPEDO DIA.**



11975

Parts List

Ref	Class	Part	Description	Qty	Comment	Footnote
1	1647	9148A93	GEAR HOUSING	1	(Black) (Basic)	
1	1647	9148A94	GEAR HOUSING	1	(Gray) (Basic)	
2	22	85822A10	CONNECTOR ASSEMBLY	1		
3	17	43044	PIN, Dowel (.375 x .625) (Witho	2		
4	16	78638	2 STUD, (.437-14/.437-20 x 3.120)	1	(Long)	
4	16	18978	3 STUD, (.438 x 3.82 Inches)	1	(X-Long)	
5	16	57920	3 STUD, (.437-14/.437-20 x 2.060)	2		
6	16	56297	2 STUD, (.312-18/.324-24 x 3.380)	1		
7	16	30667	2 STUD, (.250-20/.250-28 x 3.125)	2		
8		67891	FILLER BLOCK	1		
9	31	42647A	1 BEARING ASSEMBLY, Roller	1		
10		826134	ANODE	2		
11	10	40003	33 SCREW, (M6 x 40)	1		
12	11	826833	6 NUT, (M6)	1		
13		NSS	NOT SOLD SEPARATE, Pinion Ge	1	(2.0:1 Gear Ratio - 14 Teeth)	7
13		NSS	NOT SOLD SEPARATE, Pinion Ge	1	(1.87:1 Gear Ratio - 15 Teeth)	7
14	12	92721	WASHER	1	(Included With Foward Gear Set)	
15	11	35921	NUT, (.625-18)	1	(Included With Foward Gear Set)	
16	15	42637A	1 SHIM SET	AR	(Included With Foward Gear Set)	9
17	22	67892A	1 FITTING KIT, Plug Fill/Drain	1		
18	10	79953A	2 SCREW KIT, (.375-16 x .250)	1		
19	12	19183	2 WASHER, Fiber	2		10,8
20		56762	1 CABLE TIE, (4.00 Inches)	1		
21		78902	2 SHIFT SHAFT	1		
22	25	25439	1 O-RING, (.862 x .103)	1		4,8
23	23	77631A	2 BUSHING ASSEMBLY	1		8
24	26	816464	1 SEAL, Oil	1		8
25	12	77674	1 WASHER	1		
26	45	44000	1 DRIVESHAFT	1	(Long)	
26	45	44209	1 DRIVESHAFT	1	(X-Long)	
27	31	36387A	1 BEARING, Roller	1		
28		824519	1 RETAINER	1		
29	46	42579A	3 WATER PUMP BASE ASSEMBLY	1		
30	27	42631	1 GASKET	1		4,10,8
31	25	90011	1 O-RING, (2.175 x .175)	1		4,10,8
32	26	89238	1 OIL SEAL	1		8
33	26	16977	1 OIL SEAL	1		8
34	27	85608	1 GASKET	1		4,10,8
35	27	85609	1 GASKET	1		4,10,8
36		32435	1 FACE PLATE	1		10
37	46	96149A	1 WATER PUMP BODY ASSEMBLY	1		10