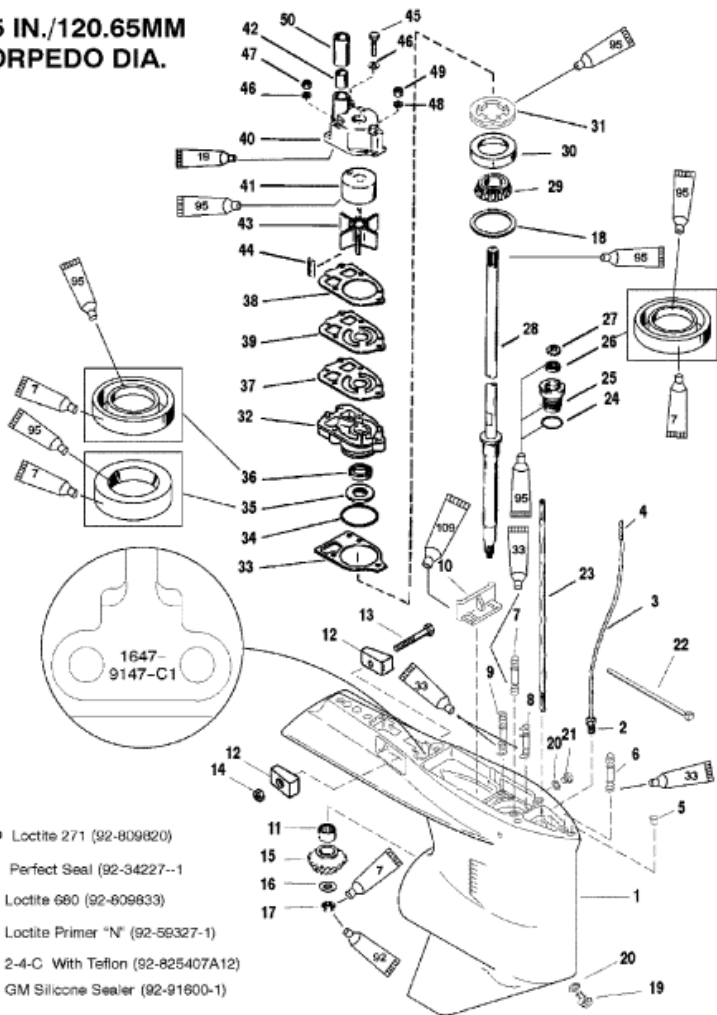


**4.75 IN./120.65MM
 TORPEDO DIA.**



- Loctite 271 (92-809820)
- Perfect Seal (92-34227-1)
- Loctite 680 (92-809833)
- Loctite Primer "N" (92-56327-1)
- 2-4-C With Teflon (92-825407A12)
- GM Silicone Sealer (92-91600-1)

11974

Parts List						
Ref	Class	Part	Description	Qty	Comment	Footnote
1	1647	9148A47	GEAR HOUSING	1	(Black, Basic)	
1	1647	9148A48	GEAR HOUSING	1	(Gray, Basic)	
2	22	85822A10	CONNECTOR ASSEMBLY	1		
3		NSS	NOT SOLD SEPARATE, Tubin	1		7
4		NSS	NOT SOLD SEPARATE, Conn	1		7
5	17	43044	PIN, Dowel (.375 x .625) (Witho	2		
6	16	78638	2 STUD, (.437-14/.437-20 x 3.120)	1	(Long)	5
6	16	18978	3 STUD, (.438 x 3.82 Inches)	1	(X-Long)	5
7	16	57920	3 STUD, (.437-14/.437-20 x 2.060)	2		5
8	16	56297	STUD, (.312 x 3.38)	1		
9	16	30667	STUD, (.250-20/.250-28 x 3.125)	2		
10		67891	FILLER BLOCK	1		
11	31	42647A	1 BEARING ASSEMBLY, Roller	1		
12		826134	ANODE	2		
13	10	40003	33 SCREW, (M6 x 40)	1		
14	11	826833	6 NUT, (M6)	1		
15		NSS	NOT SOLD SEPARATE, Pinion Ge	1	(2.0:1 Gear Ratio-14 Teeth)	7
15		NSS	NOT SOLD SEPARATE, Pinion Ge	1	(1.87:1 Gear Ratio-15 Teeth)	7
15		NSS	NOT SOLD SEPARATE, Pinion Ge	1	(2.3:1 Gear Ratio-13 Teeth)	7
16	12	92721	WASHER, Not Used With High Alt	1	(Included With Forward Gear Set)	
17	11	35921	NUT, (.625-18)	1	(Included With Forward Gear Set)	
17	11	87364	NUT	1	(High Altitude) (Included With Forw	
18	15	42637A	1 SHIM SET	AR	(Included With Forward Gear Set)	9
19	22	67892A	1 FITTING KIT, Plug Fill/Drain	1		
20	12	19183	WASHER, Fiber	2		10,8
21	10	79953A	2 SCREW KIT, (.375-16 x .250)	1		
22		56762	CABLE TIE, (4.00 Inches)	1		
23		78902	2 SHIFT SHAFT	1		
24	25	25439	1 O-RING, (.862 x .103)	1		4,8
25	23	77631A	2 BUSHING ASSEMBLY	1		8
26	26	816464	1 SEAL, Oil	1		8
27	12	77674	WASHER	1		
28	45	44000	1 DRIVESHAFT	1	(Long)	
28	45	44209	1 DRIVESHAFT	1	(X-Long)	
28	45	16292	1 DRIVESHAFT	1	(High Altitude)	
29	31	36387A	1 BEARING, Roller	1		
30		NSS	NOT SOLD SEPARATE, Cup-Ta	1		7
31		824519	RETAINER	1		
32	46	42579A	3 WATER PUMP BASE ASSEMBLY	1		
33	27	42631	1 GASKET	1		4,10,8
34	25	90011	1 O-RING, (2.175 x .175)	1		4,10,8