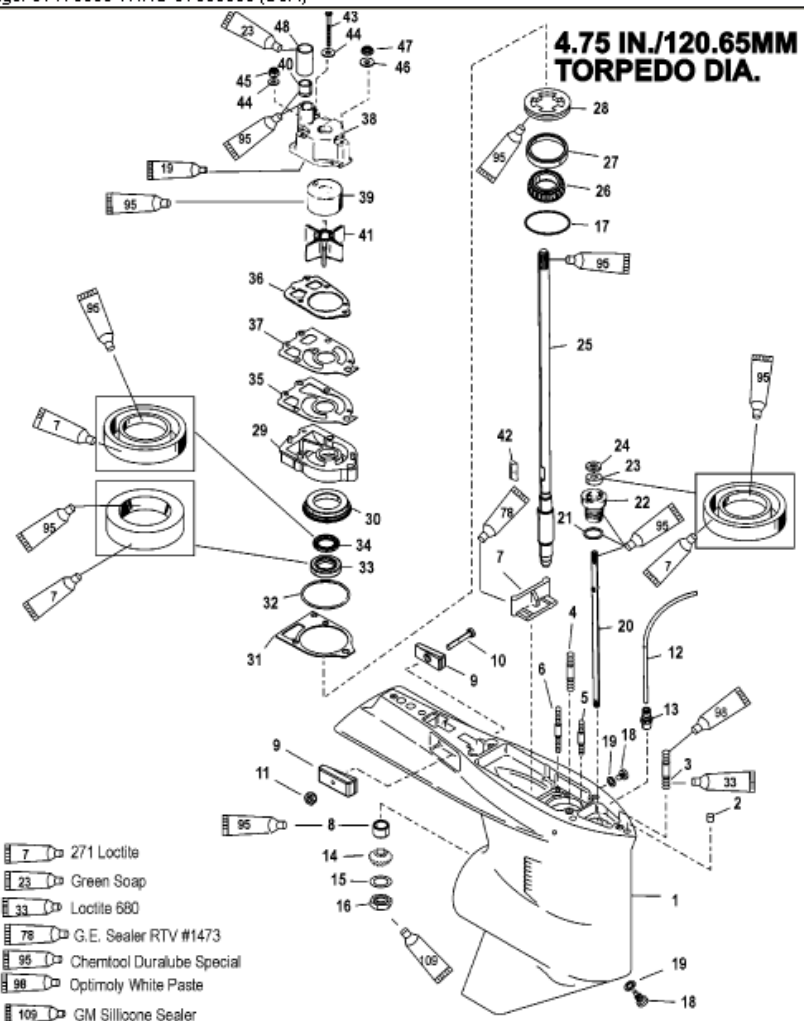


| Parts List |       |         |                            |     |                     |          |
|------------|-------|---------|----------------------------|-----|---------------------|----------|
| Ref        | Class | Part    | Description                | Qty | Comment             | Footnote |
| 0          | 1647  | 9148T86 | GEAR HOUSING (COMPLETE)    | 1   | [X-LONG - 1.87:1]   |          |
| 0          | 1647  | 9148T83 | GEAR HOUSING (COMPLETE)    | 1   | [X-LONG - 2:1]      |          |
| 1          | 1647  | 9148T93 | GEAR HOUSING               | 1   | (BASIC)             |          |
| 2          | 17    | 43044   | DOWEL PIN                  | 2   |                     |          |
| 3          | 16    | 18978   | 3 STUD (3-11/16 IN.)       | 1   |                     |          |
| 4          | 16    | 57920   | 3 STUD (2-1/16 IN.)        | 2   |                     |          |
| 5          | 16    | 56297   | 2 STUD (3-3/8 IN.)         | 1   |                     |          |
| 6          | 16    | 30667   | 2 STUD (3-1/8 IN.)         | 2   |                     |          |
| 7          |       | 67891   | FILLER BLOCK               | 1   |                     |          |
| 8          | 31    | 42647A  | 1 ROLLER BEARING           | 1   |                     | 23       |
| 9          |       | 826134Q | ANODE                      | 2   |                     |          |
| 10         | 10    | 40003   | 33 SCREW                   | 1   |                     |          |
| 11         | 11    | 826833  | 6 NUT                      | 1   |                     |          |
| 12         | 32    | 859449  | 75 HOSE (12 IN.)           | 1   |                     |          |
| 13         | 22    | 859432  | FITTING                    | 1   |                     |          |
| 14         |       | NSS     | PINION GEAR                | 1   | (1.87:1 - 15 TEETH) |          |
| 14         | 43    | 44101T  | 3 PINION GEAR              | 1   | [2:1 - 14 TEETH]    |          |
| 15         | 12    | 92721   | WASHER                     | 1   |                     | 23       |
| 16         | 11    | 35921   | NUT                        | 1   |                     | 23       |
| 17         | 15    | 42637A  | 1 SHIM (006 THRU 048)      | AR  |                     | 23       |
| 18         | 10    | 79953Q  | 2 SCREW-DRAIN              | 2   |                     |          |
| 19         | 12    | 19183   | 2 WASHER                   | 2   |                     | 15,18    |
| 20         |       | 78902   | 2 SHIFT SHAFT              | 1   |                     |          |
| 21         | 25    | 25439   | O-RING                     | 1   |                     | 2,15     |
| 22         | 23    | 77631A  | 2 BUSHING ASSEMBLY         | 1   |                     | 15       |
| 23         | 26    | 816464  | 1 OIL SEAL                 | 1   |                     | 15       |
| 24         | 12    | 77674   | WASHER-RUBBER              | 1   |                     |          |
| 25         | 45    | 44209   | 1 DRIVE SHAFT              | 1   |                     |          |
| 26         | 31    | 36387A  | 1 ROLLER BEARING           | 1   |                     | 23       |
| 27         |       | NSS     | CUP                        | 1   |                     | 23       |
| 28         |       | 824519  | 1 RETAINER                 | 1   |                     |          |
| 29         | 46    | 42579A  | 3 WATER PUMP BASE          | 1   |                     |          |
| 30         |       | NSS     | RETAINER                   | 1   |                     |          |
| 31         | 27    | 42631   | 1 GASKET                   | 1   |                     | 2,15,18  |
| 32         | 25    | 90011   | 1 O-RING                   | 1   |                     | 2,15,18  |
| 33         | 26    | 89238   | 1 OIL SEAL                 | 1   |                     | 15       |
| 34         | 26    | 16977   | 1 OIL SEAL                 | 1   |                     | 15       |
| 35         | 27    | 85608   | 1 GASKET-LOWER             | 1   |                     | 2,15,18  |
| 36         | 27    | 858524  | 1 GASKET-UPPER             | 1   |                     | 2,15,18  |
| 37         |       | 32435   | 1 FACE PLATE               | 1   |                     | 18       |
| 38         | 46    | 96148T  | 1 WATER PUMP BODY ASSEMBLY | 1   |                     | 18       |

**4.75 IN./120.65MM  
TORPEDO DIA.**



- 7 271 Loctite
- 23 Green Soap
- 33 Loctite 680
- 78 G.E. Sealer RTV #1473
- 95 Chemtool Duralube Special
- 96 Optimoly White Paste
- 109 GM Silicone Sealer
- 19 Perfect Seal Sealing Compound Number 4