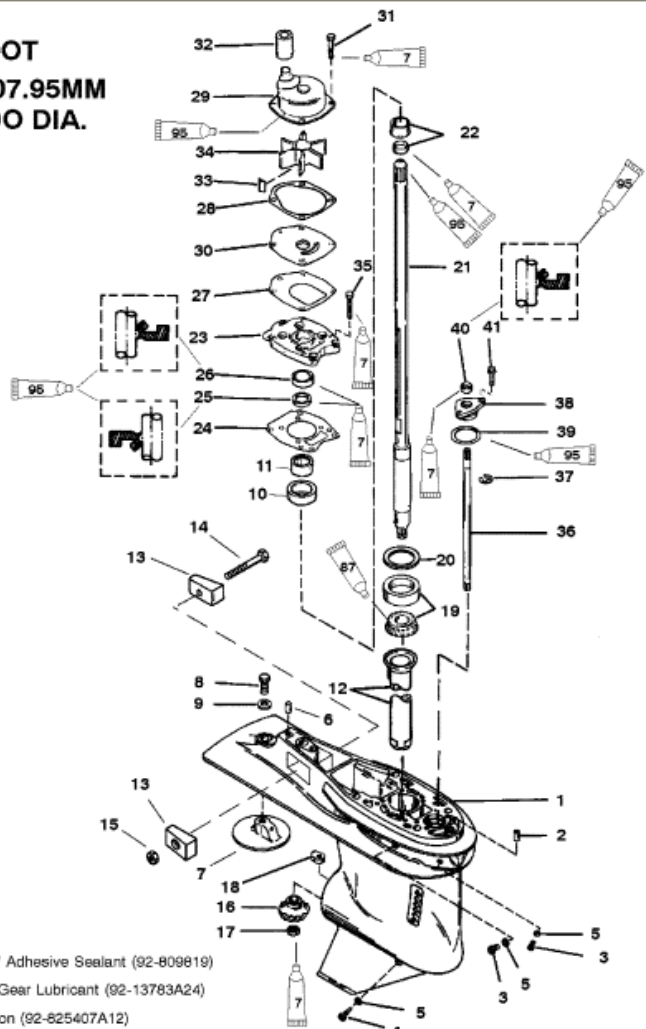
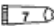

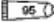


BIGFOOT
4.25 IN./107.95MM
TORPEDO DIA.



-  Loctite "271" Adhesive Sealant (92-809819)
-  Super Duty Gear Lubricant (92-13783A24)
-  2-4-C w/Teflon (92-825407A12)

| Parts List | | | | | | |
|------------|-------|-----------|-------------------------|-----|------------------------|----------|
| Ref | Class | Part | Description | Qty | Comment | Footnote |
| - | 1667 | 9011G43 | GEAR HOUSING | 1 | (BLACK) | |
| - | 1667 | 9011G44 | GEAR HOUSING | 1 | (GRAY) | |
| 1 | 1667 | 9011G59 | GEAR HOUSING | 1 | (BLACK) | |
| 1 | 1667 | 9011G60 | GEAR HOUSING | 1 | (GRAY) | |
| 2 | 17 | 43043 | DOWEL PIN (FRONT) | 1 | | |
| 3 | 10 | 79953A 2 | DRAIN SCREW | 2 | | |
| 4 | 22 | 67892A 1 | SCREW (MAGNETIC) | 1 | | |
| 5 | 12 | 19183 | WASHER-SEALING | 3 | | 16,19 |
| 6 | 17 | 43044 | DOWEL PIN (REAR) | 1 | | |
| 7 | | 31640 5 | TRIM TAB | 1 | | |
| 8 | 10 | 825427 | SCREW (7/16-14 X 1-1/4) | 1 | | |
| 9 | 12 | 45176 1 | WASHER | 1 | | |
| 10 | | 43040T 1 | CARRIER | 1 | | |
| 11 | | NSS | NEEDLE BEARING | 1 | | |
| 12 | | 43046 | OILER TUBE | 1 | | |
| 13 | | 826134 | ANODE | 2 | | |
| 14 | 10 | 40003 33 | SCREW | 1 | | |
| 15 | 11 | 826833 6 | NUT | 1 | | |
| 16 | 43 | 44484 | PINION GEAR (13 TEETH) | 1 | | |
| 17 | 11 | 35921 | NUT | 1 | | |
| 18 | | 850307 | SHIFT CAM | 1 | | |
| 19 | 31 | 42677A 1 | TAPERED ROLLER BEARING | 1 | | |
| 20 | 15 | 44492A 1 | SHIM ASSEMBLY | AR | | |
| 21 | 45 | 854808A 1 | DRIVE SHAFT ASSEMBLY | 1 | | |
| 22 | | 42461A 1 | WEAR SLEEVE ASSEMBLY | 1 | | |
| 23 | | 43055A 4 | COVER ASSEMBLY | 1 | | 19 |
| 24 | 27 | 43047 2 | GASKET | 1 | | 16,19 |
| 25 | 26 | 43036 | OIL SEAL (LOWER) | 1 | | 16,19 |
| 26 | 26 | 43035 | OIL SEAL (UPPER) | 1 | | 16,19 |
| 27 | 27 | 43033 1 | GASKET | 1 | | 16,19 |
| 28 | 27 | 817277 1 | GASKET | 1 | (S/N-0G960500 & UP) | 16,19 |
| 28 | 27 | 817277 | GASKET | 1 | (S/N-0G960499 & BELOW) | 16,19 |
| 29 | | 817275A 2 | WATER PUMP ASSEMBLY | 1 | | 19 |
| 30 | | 817276 1 | FACE PLATE | 1 | | 19 |
| 31 | 10 | 824832 7 | SCREW (M6 X 30) | 4 | | 19 |
| 32 | | 43023 | SEAL | 1 | | 16,19 |
| 33 | 28 | 43037 | KEY | 1 | | 19 |
| 34 | 47 | 43026 2 | IMPELLER | 1 | | 19 |
| 35 | 10 | 824832 6 | SCREW (M6 X 25) | 6 | | |
| 36 | | 853906A 1 | SHIFT SHAFT ASSEMBLY | 1 | | |
| 37 | 52 | 28641 | E-RING | 1 | | |