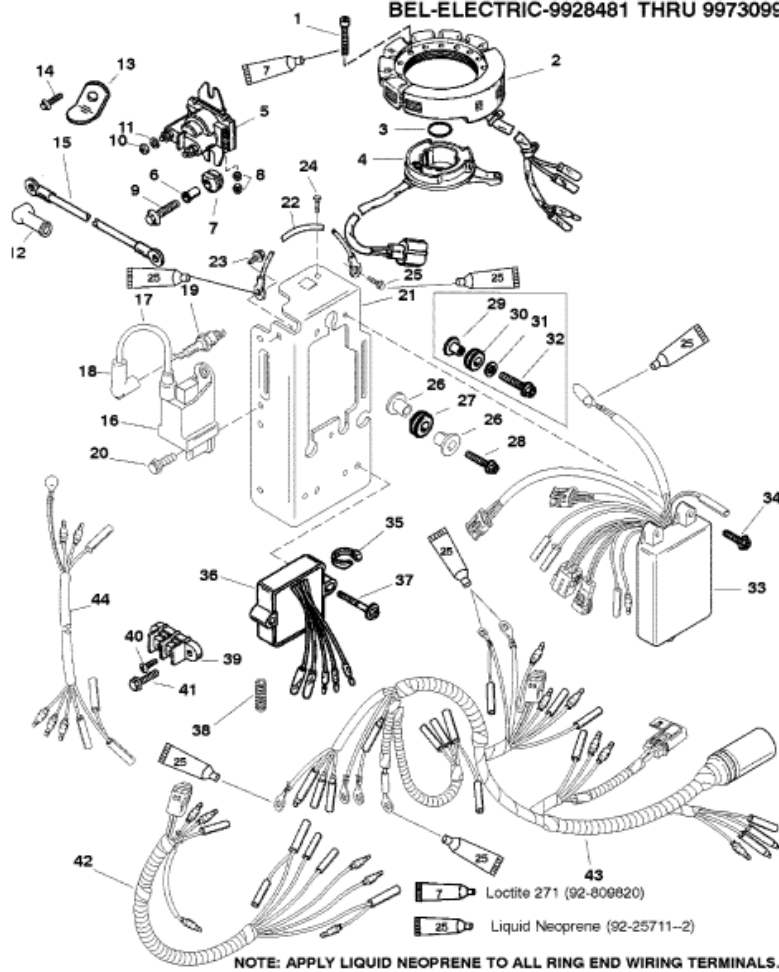


FOR SERIAL NUMBERS:  
 USA-0G380075 THRU 0G589999  
 BEL-MANUAL-9928508  
 BEL-ELECTRIC-9928481 THRU 9973099



Parts List

Ref	Class	Part	Description	Qty	Comment	Footnote
1	10	40073 30	SCREW (M5 X 30)	5	MANUAL	
2	398	832074A 5	STATOR	1	MANUAL	
3	25	62457	O RING	1	MANUAL	
4		99021A14	TRIGGER	1	MANUAL	
5	89	818998A 2	SOLENOID ASSEMBLY	1	ELECTRIC	
6	23	818968	BUSHING	2	ELECTRIC	
7	25	818967	GROMMET	2	ELECTRIC	
8	11	26419	NUT (8-32)	2	ELECTRIC	
9	10	40011129	SCREW (M6 X 25)	2	ELECTRIC	
10	11	64015	NUT (1/4-20)	2	ELECTRIC	
11	13	26392	LOCKWASHER	2	ELECTRIC	
12	85	830233	INSULATOR (RED)	1	ELECTRIC	
13		827510 1	RETAINER (ELECTRIC HANDLE)	1		
14	10	812832 1	SCREW	1		
15	84	88439A 4	BATTERY CABLE (NEGATIVE-ELE	1		
16		827509A 1	CDM ASSEMBLY	2		
17	84	821945A61	HI-TENSION CABLE	2		
18	85	63709A 1	BOOT	1		
19	33	816737 2	SPARK PLUG (NGK# BP8H-N-10)	2		
19	33	816837 2	SPARK PLUG (NGK#BPZ-8H-N-1C	2		
20	10	821291 16	SCREW (M6 X 14)	4		
21		830236 1	PLATE-ELECTRICAL	1		4
22	84	86322A32	CABLE (MANUAL)	1		
23	10	821291 14	SCREW (M6 X 14)	1		
24	10	822393 12	SCREW (M5 X 12)(ELECTRIC)	1		
25	10	818934 12	SCREW (M8 X 12)(MANUAL)	1		
26	23	831870 1	BUSHING	6	DESIGN I	1
27	25	822002	GROMMET	3	DESIGN I	1
28	10	40011130	SCREW (M6 X 30)	3	DESIGN I	1
29	23	831870	BUSHING-FLANGED	3	DESIGN II	
30	25	822002	GROMMET	3	DESIGN II	
31	12	831869	WASHER	3	DESIGN II	
32	10	40011131	SCREW (M6 X 35)	3	DESIGN II	
33		823251A 6	TPM ASSEMBLY	1		
34	10	822393 20	SCREW (M5 X 20)	3		
35	54	816311	STA-STRAP	3		
36		815279 5	VOLTAGE REGULATOR	1	ELECTRIC	4
37	10	821291 35	SCREW (M6 X 35)	2	ELECTRIC	
38	32	828547353	CONDUIT	1		3
39	86	63813 1	TERMINAL BLOCK	1	MANUAL	
40	10	48408	SCREW (10-16 X 2.8 IN.)	2	MANUAL	