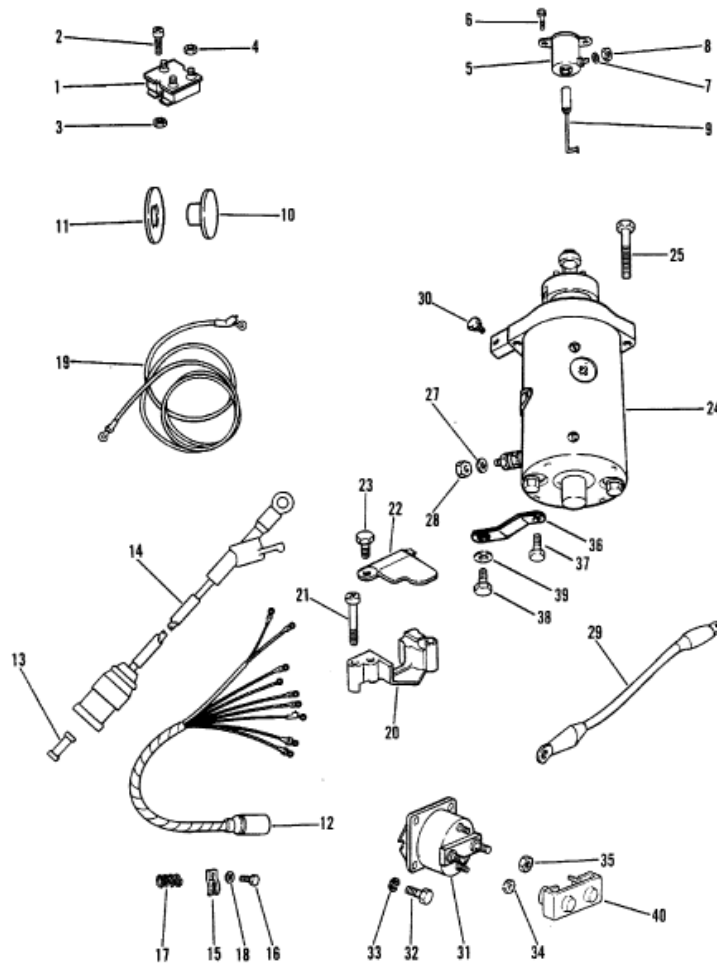


**STARTER MOTOR, RECTIFIER AND WIRING HARNESS**



| Parts List |       |          |                               |     |                           |          |
|------------|-------|----------|-------------------------------|-----|---------------------------|----------|
| Ref        | Class | Part     | Description                   | Qty | Comment                   | Footnote |
| 1          |       | 62351A 1 | RECTIFIER ASSEMBLY            | 1   |                           |          |
| 2          | 10    | 20646    | SCREW                         | 2   | RECTIFIER TO FRONT SUPPOR |          |
| 3          | 11    | 27164    | NUT, RECTIFIER FASTENING SC   | 2   |                           |          |
| 4          | 11    | 45076    | NUT, RECTIFIER TERMINAL (10-3 | 3   |                           |          |
| 5          |       | 54293A11 | CHOKE SOLENOID ASSEMBLY       | 1   |                           |          |
| 6          | 10    | 25299    | SCREW                         | 2   | CHOKE SOLENOID FRONT SUPI |          |
| 7          | 13    | 26996    | LOCKWASHER, CHOKE SOLENO      | 1   |                           |          |
| 8          | 11    | 45076    | NUT, CHOKE SOLENOID TERMIN    | 1   |                           |          |
| 9          |       | 89008A 2 | PLUNGER ASSEMBLY, CHOKE SI    | 1   |                           |          |
| 10         | 19    | 35827    | PLUG                          | 1   | BOTTOM COWL PART OF BOTT  |          |
| 11         | 11    | 30428    | FASTENER                      | 1   | PLUG TO BOTTOM COWL PART  |          |
| 12         | 84    | 96219A 2 | WIRING HARNESS (BOILT/NUT (   | 1   |                           |          |
| 12         | 84    | 96219A 5 | WIRING HARNESS (BULLET CON    | 1   |                           |          |
| 13         | 88    | 79091    | FUSE                          |     |                           |          |
| 14         | 84    | 95084A 2 | WIRE ASSEMBLY, FUSE           | 1   |                           |          |
| 15         |       | 88751    | CLAMP, WIRING HARNESS         | 1   |                           |          |
| 16         | 10    | 23702    | SCREW, WIRING HARNESS CLAI    | 1   |                           |          |
| 17         | 24    | 28357    | SPRING, WIRING HARNESS CLA    | 1   |                           |          |
| 18         | 12    | 72761    | WASHER, WIRING HARNESS CL     | 1   |                           |          |
| 19         | 84    | 88439A 3 | BATTERY CABLE ASSEMBLY (PO    | 1   |                           |          |
| 19         | 84    | 88439A 4 | BATTERY CABLE ASSEMBLY (NE    | 1   |                           |          |
| 20         |       | 88620    | BRACKET, HARNESS SUPPORT      | 1   |                           |          |
| 21         | 10    | 73280    | SCREW, HARNESS SUPPORT BF     | 2   |                           |          |
| 22         |       | 88617    | COVER, HARNESS SUPPORT BR     | 1   |                           |          |
| 23         | 10    | 28635    | SCREW, HARNESS SUPPORT BR     | 2   |                           |          |
| 24         | 50    | 41583    | STARTER MOTOR ASSEMBLY (1     | 1   |                           |          |
| 25         | 10    | 35213    | SCREW                         | 2   | STARTER MOTOR TO CRANKC   |          |
| 27         | 13    | 26992    | LOCKWASHER, CABLE TO STAR     | 1   |                           |          |
| 28         | 11    | 20890    | NUT, CABLE TO STARTER MOTC    | 1   |                           |          |
| 29         | 84    | 88809A 6 | CABLE, STARTER TO SOLENOID    | 1   |                           |          |
| 30         | 10    | 69035    | SCREW                         | 1   | BATTERY CABLE TO STARTER  |          |
| 31         | 89    | 96158    | STARTER SOLENOID              | 1   |                           |          |
| 32         | 10    | 98253    | SCREW, SOLENOID TO BRACKE     | 2   |                           |          |
| 33         | 13    | 26992    | LOCKWASHER, STARTER SOLEI     | 2   |                           |          |
| 34         | 11    | 26419    | NUT, STARTER SOLENOID TERM    | 2   |                           |          |
| 35         | 11    | 94330    | NUT, STARTER SOLENOID TERM    | 2   |                           |          |
| 36         |       | 42729A 1 | BRACKET, STARTER MOTOR TO     | 1   |                           |          |
| 37         | 10    | 32079    | SCREW, BRACKET TO STARTE      | 1   |                           |          |
| 38         | 10    | 69022    | SCREW, BRACKET TO CRANKC      | 1   |                           |          |
| 39         | 12    | 89302    | WASHER, BRACKET SCREW         | 1   |                           |          |
| 40         | 95    | 92861    | INSULATOR, STARTER SOLENO     | 1   |                           |          |