

ZF 302 IV

15° V-drive, direct mount marine transmission.

Maximum Input**

Duty	kW	hp	RPM
Pleasure	469	629	3000
Light	385	516	3000
Medium	321	430	3000

** Must not be exceeded

Description

- Fully works tested, reliable and simple to install .
- Design, manufacture and quality control standards comply with ISO 9001 .
- Compatible with all types of engines and propulsion systems, including waterjets and surface- piercing propellers, as applicable .
- Suitable for high performance applications in luxury motoryachts, sport fishers, express cruisers etc .
- Reverse reduction marine transmission with hydraulically actuated multi-disc clutches .

Features

- Lightweight and robust aluminum alloy casing (sea water resistant) .
- Case hardened and precisely ground gear teeth for long life and smooth running .
- Output shaft thrust bearing designed to take maximum propeller thrust astern and ahead .
- Smooth and reliable hydraulic shifting with control lever for attachment of push-pull cable .
- Suitable for twin engine installations (same ratio and torque capacity in ahead or astern mode) .
- Replaceable oil filter cartridge .
- Compact, space saving design; 10° down-angle and beveloid gear principle (A-2 version) 15° vee-angle and beveloid gear .

Options

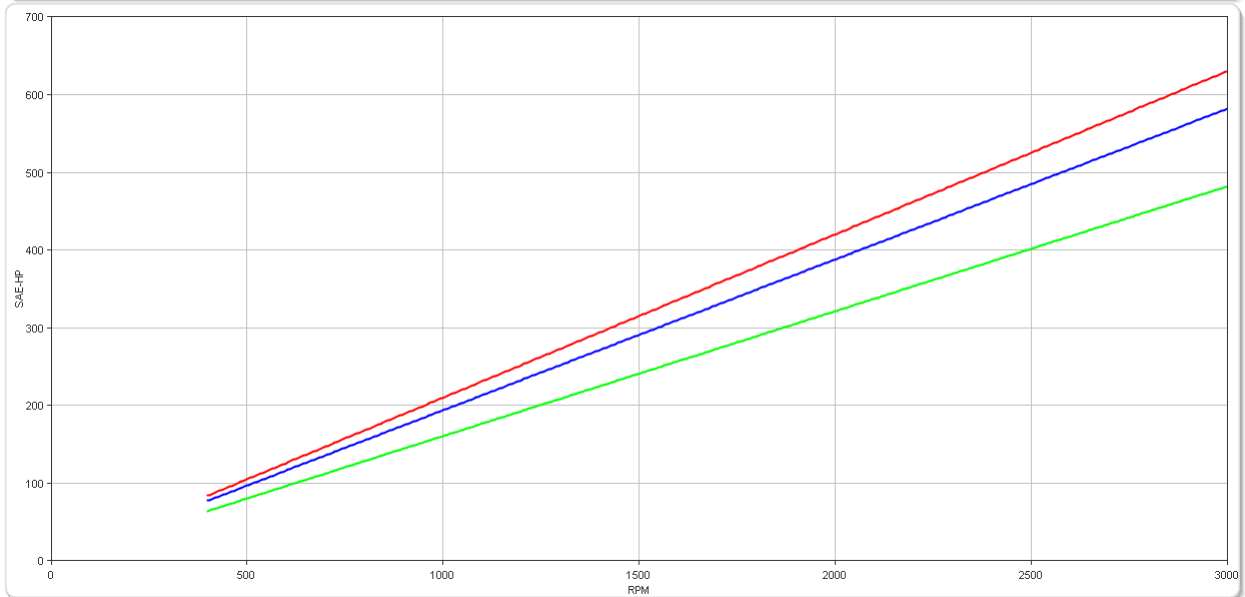
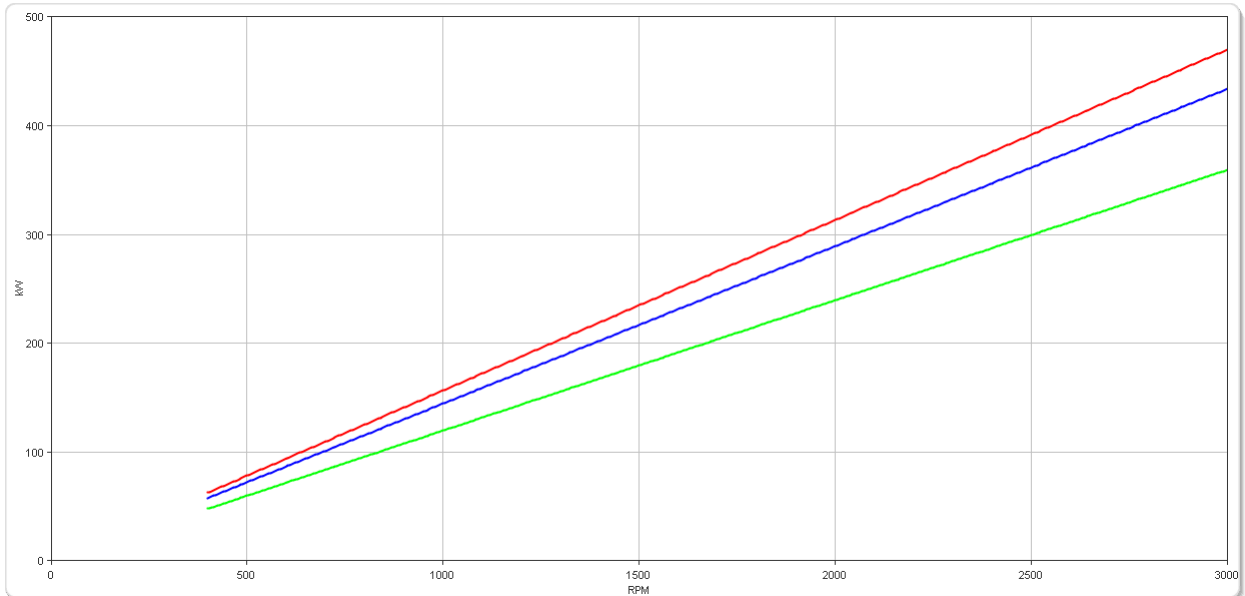
- Propeller shaft flange and coupling bolt sets .
- Classification by all major Classification Societies on request .
- Oil cooler complete with fittings and flexible oil hoses .
- Mounting brackets .
- SAE 2 and SAE 3 bell housings .
- Trolling valve for slow-speed drive .
- Electric clutch control (12 or 24 VDC) .
- Engine-matched torsional coupling; Standard up to 1227 Nm (SAE 2, 3) and special up to 1381 Nm (SAE 2) .

ZF 302 IV

Ratings

Pleasure Duty

RATIOS	MAX. TORQUE		POWER/RPM		MAXIMUM RATED POWER						MAX. RPM
	Nm	ftlb	kW	hp	2300 rpm		2500 rpm		2800 rpm		
					kW	hp	kW	hp	kW	hp	
■ 1.297, 1.482, 1.651, 1.771*	1496	1103	0.1566	0.2101	360	483	392	525	439	588	3000
■ 2.184	1381	1019	0.1446	0.1939	333	446	362	485	405	543	3000
■ 2.611, 3.159*	1144	844	0.1198	0.1606	276	369	299	402	335	450	3000

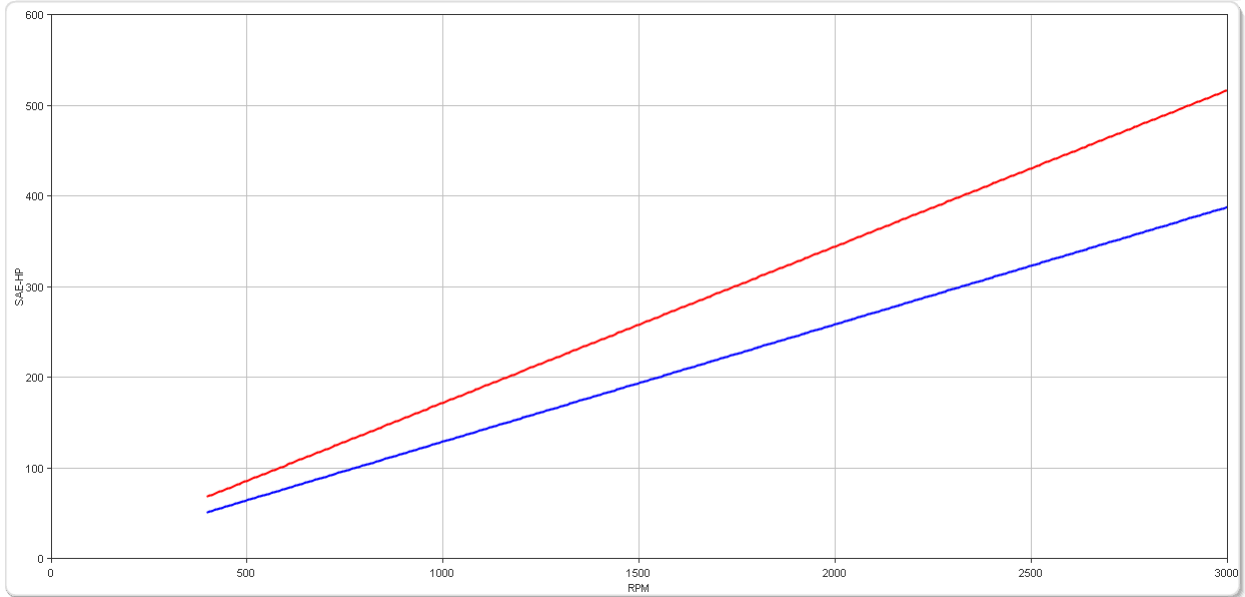
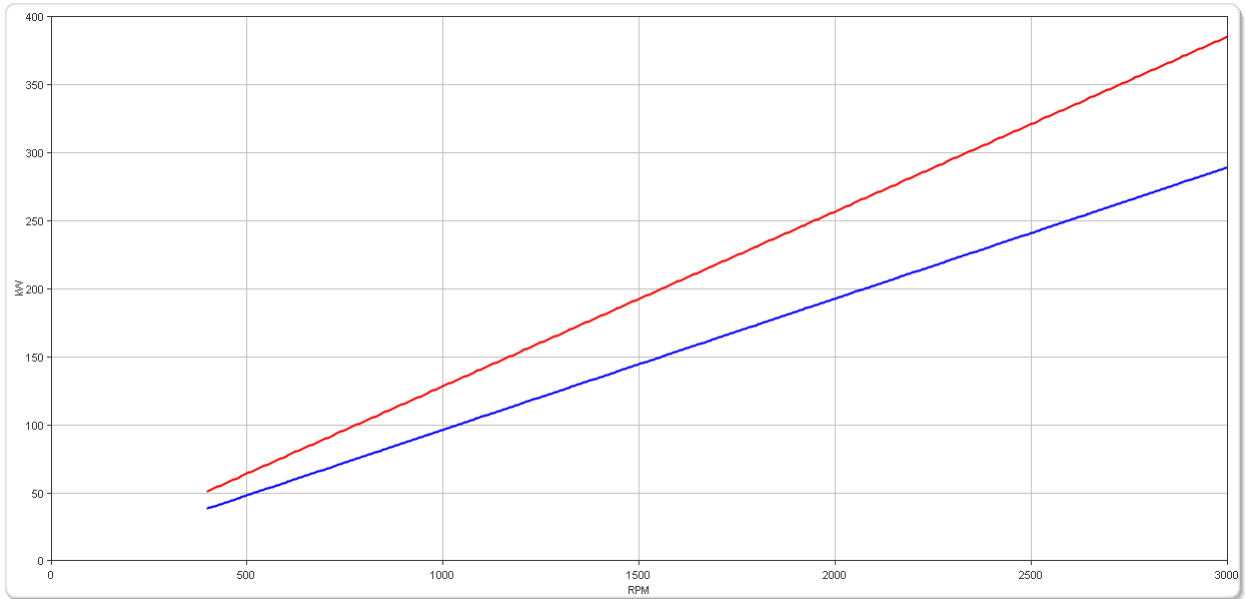


ZF 302 IV

Ratings

Light Duty

RATIOS	MAX. TORQUE		POWER/RPM		MAXIMUM RATED POWER						MAX. RPM
	Nm	ftlb	kW	hp	2100 rpm		2500 rpm		2800 rpm		
1.297, 1.482, 1.651, 1.771*, 2.184	1227	905	0.1285	0.1723	270	362	321	431	360	482	3000
2.611, 3.159*	921	679	0.0964	0.1293	203	272	241	323	270	362	3000

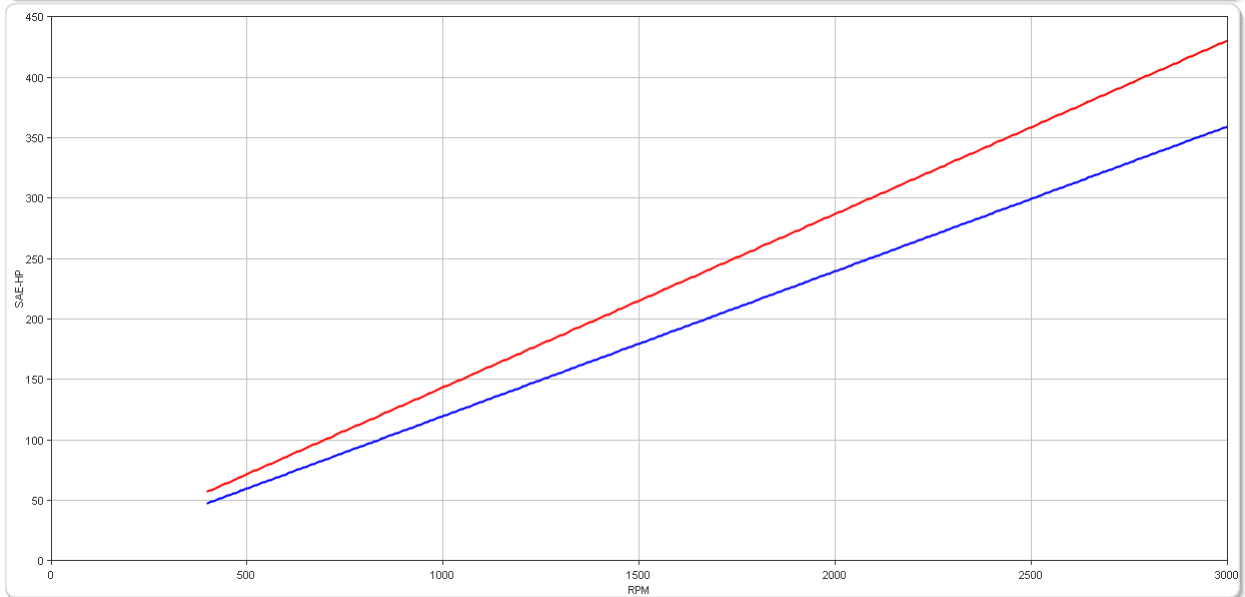
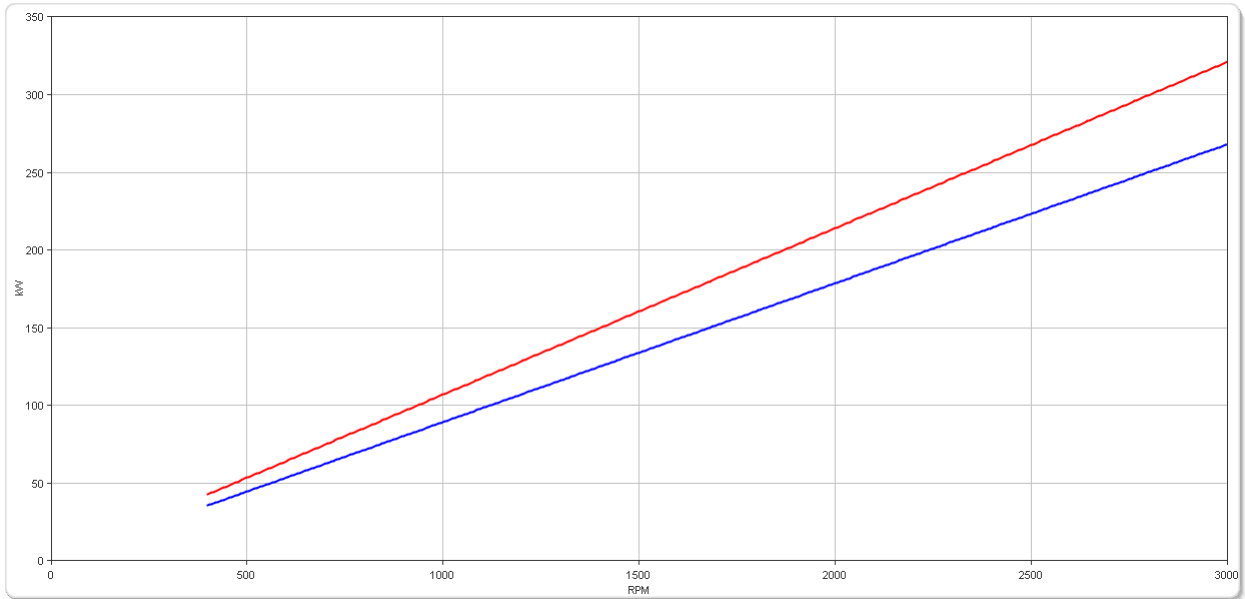


ZF 302 IV

Ratings

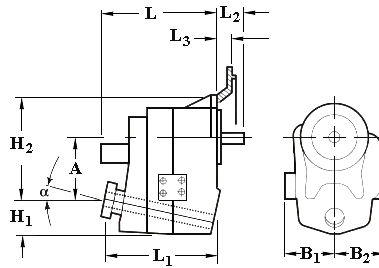
Medium Duty

RATIOS	MAX. TORQUE		POWER/RPM		MAXIMUM RATED POWER						MAX. RPM
	Nm	ftlb	kW	hp	2100 rpm		2500 rpm		2800 rpm		
■ 1.297, 1.482, 1.651, 1.771*, 2.184	1022	754	0.1070	0.1435	225	301	268	359	300	402	3000
■ 2.611, 3.159*	853	629	0.0893	0.1198	188	252	223	299	250	335	3000



ZF 302 IV

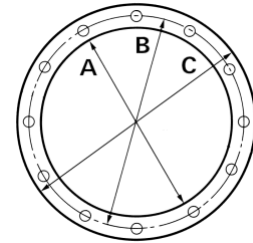
Dimensions



mm (inches)										
Angle	A	B ₁	B ₂	H ₁	H ₂	L	L ₁	L ₂	L ₃	Bell Hsg.
15.0	270 (10.6)	254 (10.0)	254 (10.0)	164 (6.45)	440 (17.3)	467 (18.4)	302 (11.9)	73.0 (2.87)	50.0 (1.97)	1
Weight kg (lb)						Oil Capacity Litre (US qt)				
127 (280)						9.00 (9.50)				

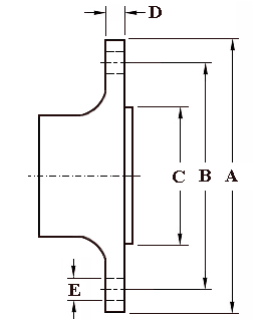
SAE Bell Housing Dimensions

SAE No.	A		B		C		Bolt Holes		
	mm	in	mm	in	mm	in	No.	Diameter	
	mm	in	mm	in	mm	in	No.	mm	in
2	447.68	17.625	466.73	18.375	488.95	19.25	12	10.32	13/32



Output Coupling Dimensions

A		B		C		D		Bolt Holes		
mm	in	mm	in	mm	in	mm	in	No.	Diameter (E)	
mm	in	mm	in	mm	in	mm	in	No.	mm	in
184	7.25	152	6.00	95.3	3.75	16.0	0.63	8	16.3	0.64



Duty Definitions

PLEASURE DUTY DEFINITION	Highly intermittent operation with very large variations in engine speed and power
Average engine operating hours limit:	500 hours/year 300 hours/year for mechanical gearboxes
Typical hull forms:	Planing.
Typical applications:	Private, non-commercial, non-charter sport/leisure activities.
LIGHT DUTY DEFINITION	Intermittent operation with large variations in engine speed and power
Average engine operating hours limit:	2500 hours/year (for hydraulic gearboxes smaller than the ZF 650 series, 2000 hours/year).
Typical hull forms:	Planing and semi-displacement.
Typical applications:	Private and charter, sport/leisure activities, naval and police activities.
MEDIUM DUTY DEFINITION	Intermittent operation with some variations in engine speed and power
Average engine operating hours limit:	4000 hours/year. 3500 hours/year for gearboxes smaller than ZF 2000 series and workboat ZF W2700 series.
Typical hull forms:	Semi-displacement and displacement
Typical applications:	Charter and commercial craft (example: crew boats and fast ferries), and naval and police activities.

Duty Ratings

Ratings apply to marine diesel engines at the indicated speeds. At other engine speeds, the respective power capacity (kW) of the transmission can be obtained by multiplying the Power/Speed ratio by the speed.

Approximate conversion factors:

- 1 kW = 1.36 metric hp
- 1 kW = 1.34 U.S. hp (SAE)
- 1 U.S. hp = 1.014 metric hp
- 1 Nm = 0.74 lb.ft.

Ratings apply to right hand turning engines, i.e. engines having counterclockwise rotating flywheels when viewing the flywheel end of the engine. These ratings allow full power through forward and reverse gear trains, unless otherwise stated.

Contact your nearest ZF Sales and Service office for ratings applicable to gas turbines, gasoline (petrol) engines, as well as left hand turning engines, and marine transmissions for large horsepower capacity engines.

Ratings apply to marine transmissions currently in production or in development and are subject to change without prior notice.

NOTE: THE MAXIMUM RATED INPUT POWER MUST NOT BE EXCEEDED (SEE RESPECTIVE RATINGS IN THE TECHNICAL DATA SHEETS)

Safe Operating Notice

The safe operation of ZF products depends upon adherence to technical data presented in our brochures. Safe operation also depends upon proper installation, operation and routine maintenance and inspection under prevailing conditions and recommendations set forth by ZF. Damage to transmission caused by repeated or continuous emergency manoeuvres or abnormal operation is not covered under warranty. It is the responsibility of users and not ZF to provide and install guards and safety devices, which may be required by recognized safety standards of the respective country (e.g. for U.S.A. the Occupational Safety Act of 1970 and its subsequent provisions).

Monitoring Notice

The safe operation of ZF products depends upon adherence to ZF monitoring recommendations presented in our operating manuals, etc. It is the responsibility of users and not ZF to provide and install monitoring devices and safety interlock systems as may be deemed prudent by ZF. Consult ZF for details and recommendations.

Torsional Responsibility and Torsional Couplings

The responsibility for ensuring torsional compatibility rests with the assembler of the drive and driven equipment. ZF can accept no liability for gearbox noise caused by vibrations or for damage to the gearbox, the flexible coupling or to other parts of the drive unit caused by this kind of vibration. Contact ZF for further information and assistance. ZF recommends the use of a torsional limit stop for single engine powered boats, wherein loss of propulsion power can result in loss of control. It is the buyer's responsibility to specify this option, which can result in additional cost and a possible increase in installation length.

ZF can accept no liability for personal injury, loss of life, or damage or loss of property due to the failure of the buyer to specify a torsional limit stop. ZF selects torsional couplings on the basis of nominal input torque ratings and commonly accepted rated engine governed speeds. Consult ZF for details concerning speed limits of standard offering torsional couplings, which can be less than the transmission limit. Special torsional couplings may be required for Survey Society Ice Classification requirements.

