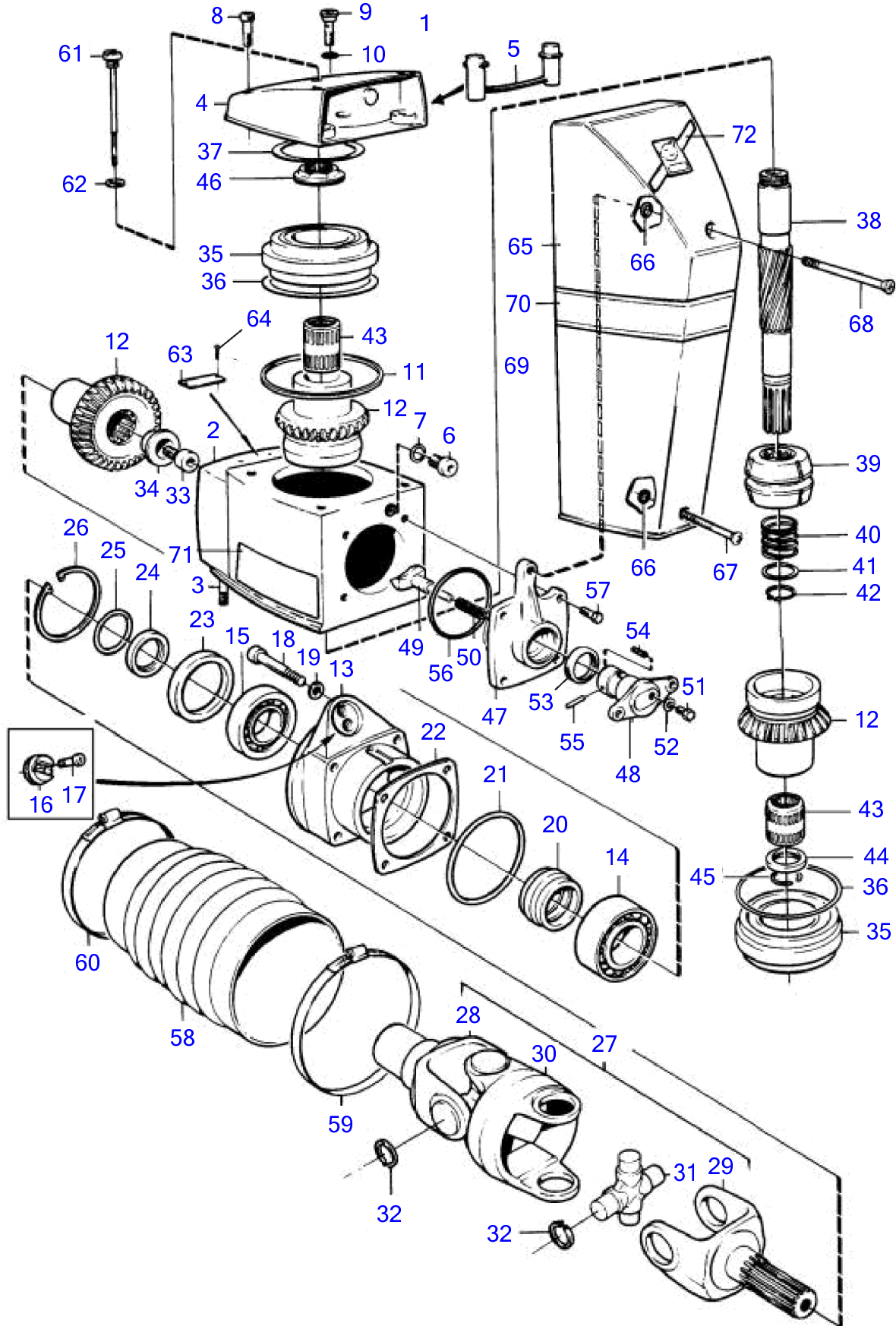


DP-C1 1.95, DP-C1 2.30



12655

DP-C1 1.95, DP-C1 2.30

REF	PART NO.	QTY	DESCRIPTION	SEE SEC.	NOTES
1	3868002	1	Aquamatic drive, complete assy, DP-C1 (1.95:1)		
	3803221	1	Aquamatic drive, exc, complete assy, DP-C1 (1.95:1), exch		
	3868008	1	Aquamatic drive, complete assy, DP-C1 (2.30:1)		
	3803222	1	Aquamatic drive, exc, complete assy, DP-C1 (2.30:1), exch		
	873002	1	Gear		
2	854571	1	• Gear housing		
3	977241	2	• Stud		
4	854677	1	• Cardboard tube		
5	(854198)	1	• Plastic plug		Obsolete part
6	814179	1	• Plug		
7	897682	1	• Gasket		
8	941807	3	• Hex. socket screw		
9	814643	1	• Hollow screw		
10	955989	1	• O-ring		
11	832669	1	• Gasket		
12		1	• Gear set		
13	854025	1	• Bearing box		
14	853949	1	• Roller bearing		
15	183247	1	• Roller bearing		
16	852705	1	• Pivot pin		
17	941807	2	• Hex. socket screw		
18	956591	4	• Hex. socket screw		
19	942598	4	• Washer		
20	853484	1	• Pretensioning sleeve		
21	925095	1	• O-ring		
22	853034	1	• Shim, 0.10 mm		
	853035	1	• Shim, 0.15 mm		
	853036	1	• Shim, 0.35 mm		
23	839253	1	• Sealing ring		
24	832675	1	• Washer		
25	956000	1	• O-ring		
26	914538	1	• Snap ring		
27	854615	1	• Universal joint • Bulletin P-44-1-5	P-44-1-5-EN	U-joints
28	854616	1	• • Fork		
29	854617	1	• • Fork		
30	854618	1	• • Intermediate section		
31	854619	2	• • Spider		
32	24383	8	• • Lock ring		
33	854201	1	• Screw		
34	853026	1	• Washer		
35	3852389	2	• Bearing		
36	943869	1	• Shim, 0.05 mm		
	946179	1	• Shim, 0.10 mm		
	943870	1	• Shim, 0.20 mm		
37	941826	1	• Shim, 0.05 mm		
	941827	1	• Shim, 0.20 mm		
	948230	1	• Shim, 0.35 mm		
38	3852292	1	Shaft		
39	854222	1	• Sliding sleeve • Bulletin P-44-1-8 • Bulletin P-44-1-18	P-44-1-8-EN P-44-1-18-EN	Shift mechanism, shift cone and shoe Shift Cone
40	3852296	1	• Spring		
41	3852298	1	• Spacer		
42	951078	1	• Snap ring		
43	3852390	2	• Bearing		
44	854192	1	• Spacer ring		
45	3852295	2	• Locking clip		
46	854228	1	• Nut, 0 mm		
	854229	1	• Nut, 0.20 mm		

7749309-44-10816

12655

Upd:2014-10-27

DP-C1, DP-D1, DP-S, DP-C1 1.95, DP-C1 2.30, DP-D1 1.68, DP-D1 1.78, DP-D1 1.95, DP-D1 2.30

VOLVO
PENTA

DP-C1 1.95, DP-C1 2.30

REF	PART NO.	QTY	DESCRIPTION	SEE SEC.	NOTES
	854230	1	• Nut, 0.40 mm		
	3852375	1	• Nut, 0.60 mm		
47	872993	1	• Bearing housing		
48	897816	1	• Eccentric piston		
			• Bulletin P-44-1-7	P-44-1-7-EN	Shift mechanism, eccentric piston
49	839646	1	• Dog		
50	814184	1	• Spring		
51	897711	1	• Hexagon screw		
52	897871	1	• Shim		
53	873291	1	• Sealing ring		
54	951924	1	• Spring pin		
55	942871	1	• Clevis pin		
56	925093	1	• O-ring		
57	940169	4	• Hexagon screw		
58	876294	1	• Bellows kit		
			• Bulletin P-44-1-11	P-44-1-11-EN	DPH/DPR U-Joint Bellows
59			• •		
60	853012	1	• • Hose clamp		
61	839351	1	• Oil dipstick		
62	955974	1	• O-ring		
63	853706	1	• Type plate		
64	804269	2	• Drive screw		
65	854604	1	Protecting cover		
66	925052	2	O-ring		
67	854661	1	Screw		
68	872027	1	Screw		
69	876636	1	Decal set		
70	872866	1	• Decal		
71	872868	1	• Decal, port		
	872867	1	• Decal, starboard		
72	854144	1	Sign		

7749309-44-10816

12655

Upd:2014-10-27

DP-C1, DP-D1, DP-S, DP-C1 1.95, DP-C1 2.30, DP-D1 1.68, DP-D1 1.78, DP-D1 1.95, DP-D1 2.30