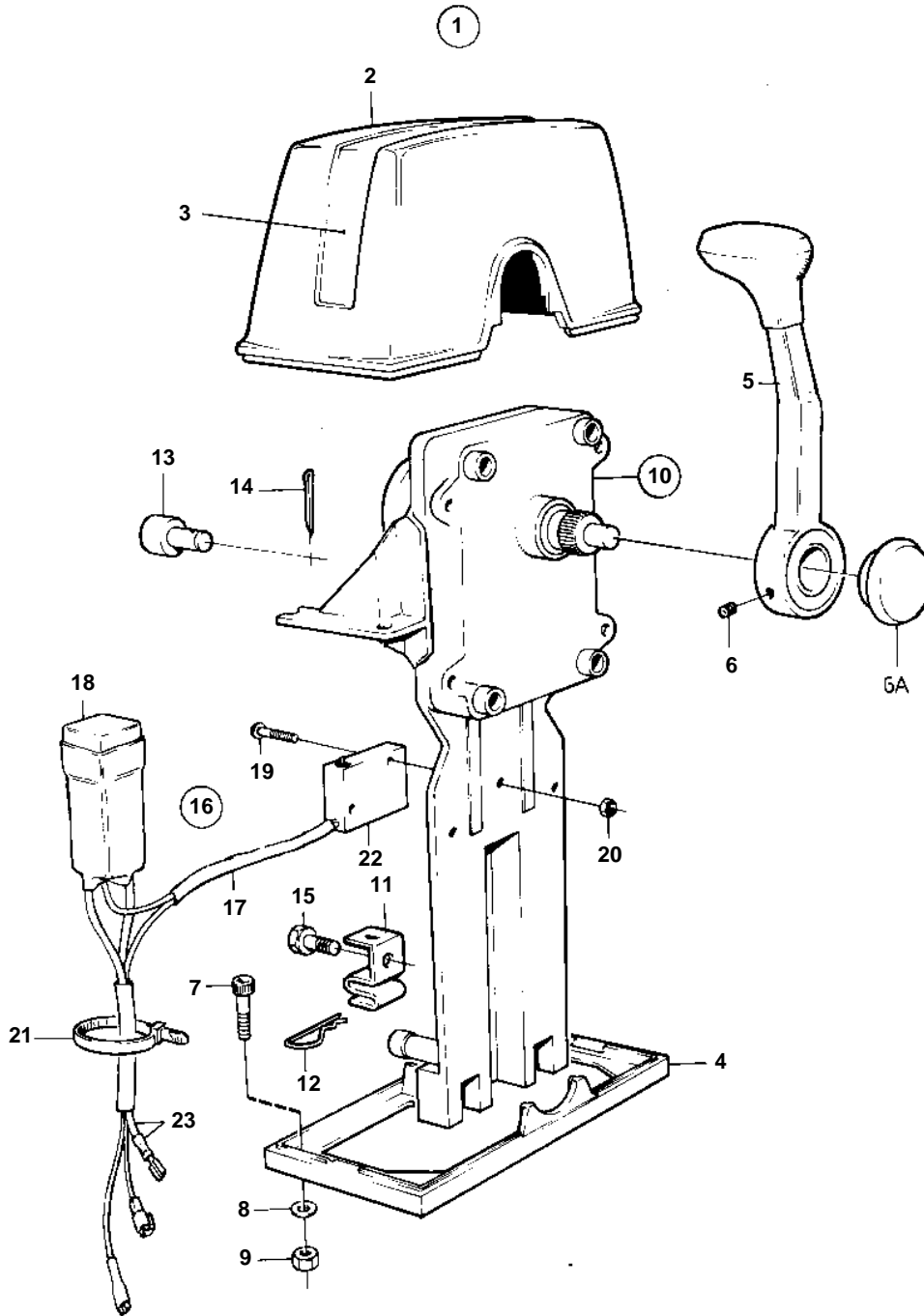


AQ225D, AQ225E, AQ225F, BB225A, BB225B, BB225C



7602

AQ225D, AQ225E, AQ225F, BB225A, BB225B, BB225C

REF	PART NO.	QTY	DESCRIPTION	NOTES
1	851602	1	Mounting kit	SINGLE
2	839472	1	· Cover	
3		1	· Decal	
4	839474	1	· Plate	
5		1	· Lever	
6A	853004		Push button	
6	839693	1	· Lock screw	
7	947671	4	· Hex. socket screw	
8	960138	4	· Washer	
9	955780	4	· Hexagon nut	
10	851600	1	Control	
11	853423	1	· Retainer	
12	852924	1	· Clip	
13	839638	1	· Cube	
14	17253	1	· Split pin	
15	839664	1	Screw	
16	839641	1	Neutral position con	
17		1	· Cable kit	
18	1501832	1	· Relay	
19	946177	2	· Cross recessed screw	
20	947536	2	· Hexagon nut	
21	948210	X	· Cable tie	
22	850200	1	· Toggle switch	
23		X	CABLES AND TERMINALS	SEE GROUP 3