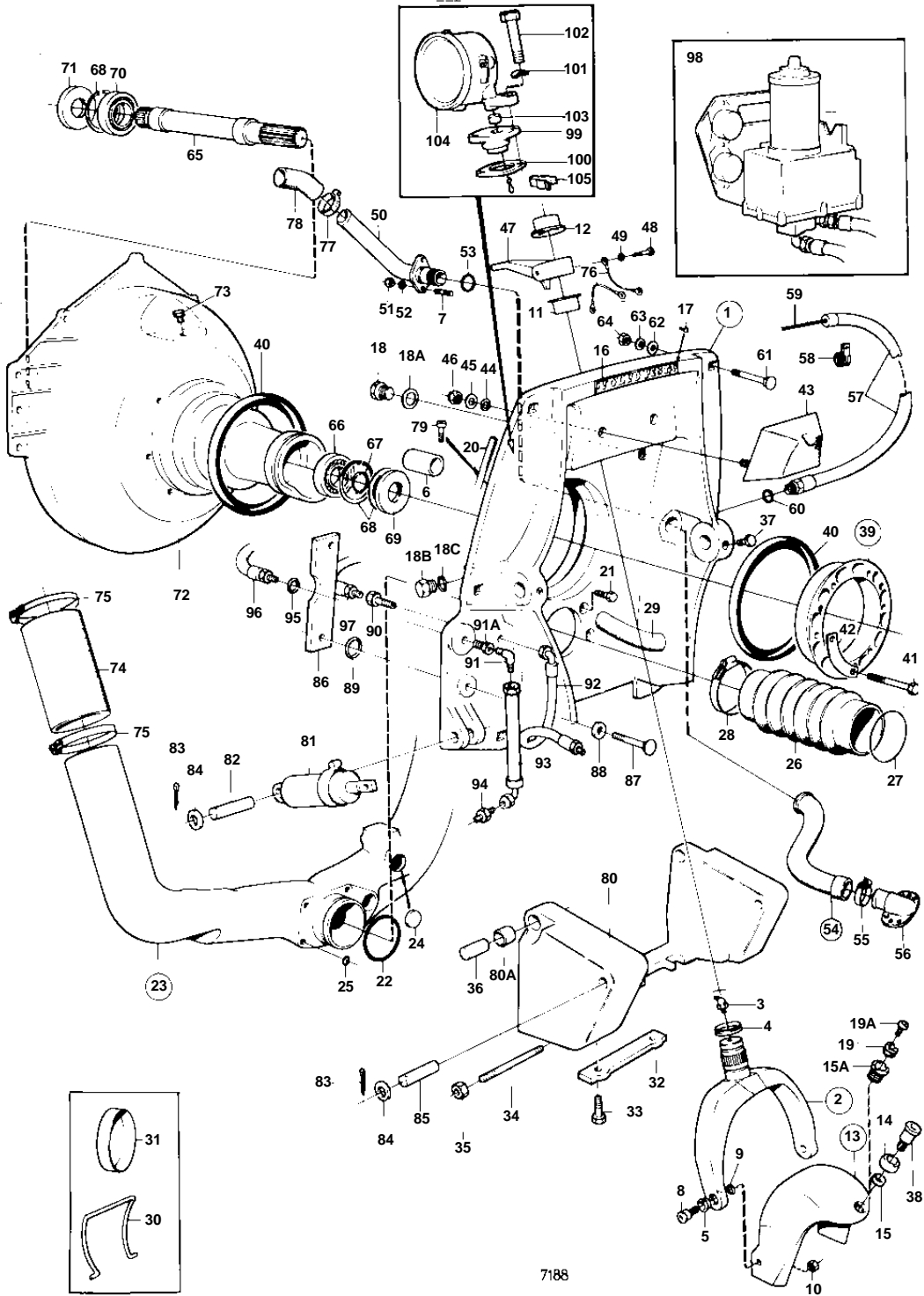


AQ175A



AQ175A

REF	PART NO.	QTY	DESCRIPTION	SEE SEC.	NOTES
1	875665	1			REPLACED BY 1EA 875674 1EA 851265 1EA 851263 2EA 941807.
	875674	1	Shield		
2	839441	1	• Steering yoke		
3	914169	1	• • Lubricating nipple		
4	839195	1	• • Ring	IK	
			• • Bulletin 48-23	48-23-EN	Seal Ring
5	814640	2	• • Bushing		
6	850653	1	• Bushing		
7	941872	2	• Stud		
8	897798	2	• Shoulder screw		
9	897244	2	• Washer		
10	943152	2	• Nut		
11	853861	1	• Bushing		LOWER
			• Bulletin 48-23	48-23-EN	Seal Ring
12	853862	1	• Bushing		UPPER
			• Bulletin 48-23	48-23-EN	Seal Ring
13	839592	1	• Protective helmet		EARLY TYPE
	851267	1	• Protective helmet		LATE TYPE
14	839698	1	• • Bushing		EARLY TYPE
15	839697	1	• • Bushing		EARLY TYPE
15A	853048	1	• • Bushing		LATE TYPE. FOR BEARING TAP WITH TWO BOLTS.
16	832608	1	• Sign		
17	804269	2	• Drive screw		
18	897744	1	• Plug		EARLY TYPE
18A	897745	1	• Gasket		EARLY TYPE
18B	897744	1	Plug		
18C	897745	1	Gasket		
19	852705	1	Pivot pin		LATE TYPE, SEE GROUP 4C
19A	941807	2	Screw		LATE TYPE, SEE GROUP 4C
20	897726	1	Sealing strip		
21	959967	4	Screw		
22	925256	1	O-ring	IK	
23	826443	1	Grommet		
24	941399	1	• Plug		
25	925055	4	O-ring	IK	
26	875828	1	Bellows kit		
27		9	• SEAL RING		
28	961675	2	• Hose clamp		
29	843235	2	Rubber hook		
30	884937	1	Conveyer stop		(897824). FOR TRANSPORT.
31	944738	1	Plastic plug		FOR TRANSPORT.
32	832598	1	Zinc electrode		
33	959438	2	Screw		
34	850807	1	Adjuster pin		
35	814357	2	Flange nut		
36	850804	2	Pivot pin		
37	850904	2	Lock screw		
38	839696	1	Shoulder screw		EARLY TYPE SEE GROUP 4C
39	806310	1	Clamping ring		
40	804190	2	• Rubber ring		
41	191844	6	• Screw		
42	806624	3	• Striker plate		
43	875531	1	Rubber cushion		
44	832565	2	• Gasket		
45	940097	2	• Washer		
46	950364	2	• Nut		
47	850488	1	Spindle arm		SEE GROUP 6
48	955537	1	Screw		
49	940097	1	Washer		
50	850729	1	Grommet		
51	950352	2	Lock nut		

AQ175A

REF	PART NO.	QTY	DESCRIPTION	SEE SEC.	NOTES
52	955893	2	Washer		
53	925063	1	O-ring		
54	875822	1	Hose kit		
55	853548	2	Hose clamp		
56	832846	1	Hose connection		SEE GROUP 4C
57	839091	1	Hose		
58	952635	1	Clamp		
59		X	CONTROL CABLE		SEE GROUP 9
60	897745	1	Gasket		
61	943426	6	Screw		
62	850418	6	O-ring		
63	190878	6	Washer		
64	940176	6	Nut		
65	839425	1	Shaft		
66	181105	1	Ball bearing		
67	914462	1	Lock ring		
68	914533	3	Snap ring		
69	958860	1	Sealing ring		
70	11013	1	Ball bearing		
71	958860	1	Sealing ring		
72	835977	1	Flywheel housing		SEE GROUP 2A. REPLACED BY 1EA FLYWHEEL COVER 841967 AND 1EA GREASE NIPPLE 914167.
73	804262	1	Plug		
74	834751	2	Hose		SEE GROUP 2B
75	834718	8	Hose clamp		SEE GROUP 2B
76		X	CABLE AND CABLE TERMINALS		SEE GROUP 3
77	961669	1	Hose clamp		SEE GROUP 2B
78		X	HOSE		SEE GROUP 2B
79	956568	2	Screw		SEE GROUP 9
80	850917	1	Brace		
80A	832820	2	Bushing		
81	850921	1	Hydraulic cylinder		S.B
	850939	1	Hydraulic cylinder		P
82	850805	2	Pin		
83	851073	8	Cotter pin		
84	943194	8	Washer		
85	850806	2	Pin		
86	850902	2	Spacer		
87	851071	2	Screw		
88	851072	2	Washer		
89	850418	2	O-ring		
90	851042	2	Nipple, GROMMET	04A-0300 04A-0400	
91	850916	2	Nipple		
91A	851221	2	Fitting		MO892101-
92	850906	2	Hose		
93	850907	2	Hose		
94	850903	2	Fitting		
95	941820	2	O-ring, O-RING	04A-0300 04A-0400	
96	850908	2	Hose, HOSE	04A-0300 04A-0400	
97	850909	2	Hose, HOSE	04A-0300 04A-0400	
98		1	HYDRAULIC PUMP WITH INSTALLATION COMPONENTS	04A-0300	EARLY TYPE
		1	HYDRAULIC PUMP WITH INSTALLATION COMPONENTS	04A-0400	LATE TYPE
99	851306	1	Flange		MO-893180

AQ175A

REF	PART NO.	QTY	DESCRIPTION	SEE SEC.	NOTES
99	851307	1	Flange		MO893181-
100	851308	1	Gasket		
101	955894	2	Washer		
102	955525	2	Screw		MO-893180 L = 25 MM
	955525	1	Screw		MO893181- L = 25 MM
	940159	1	Screw		MO893181- L = 32 MM
103	830449	1	Seal		MO893181-
104	852695	1	Sender		(851313) MO893181-. REPLACED BY 1EA SENDER 852695.
	852695	1	Sender		
105	851397	1	Clamp		MO893181-