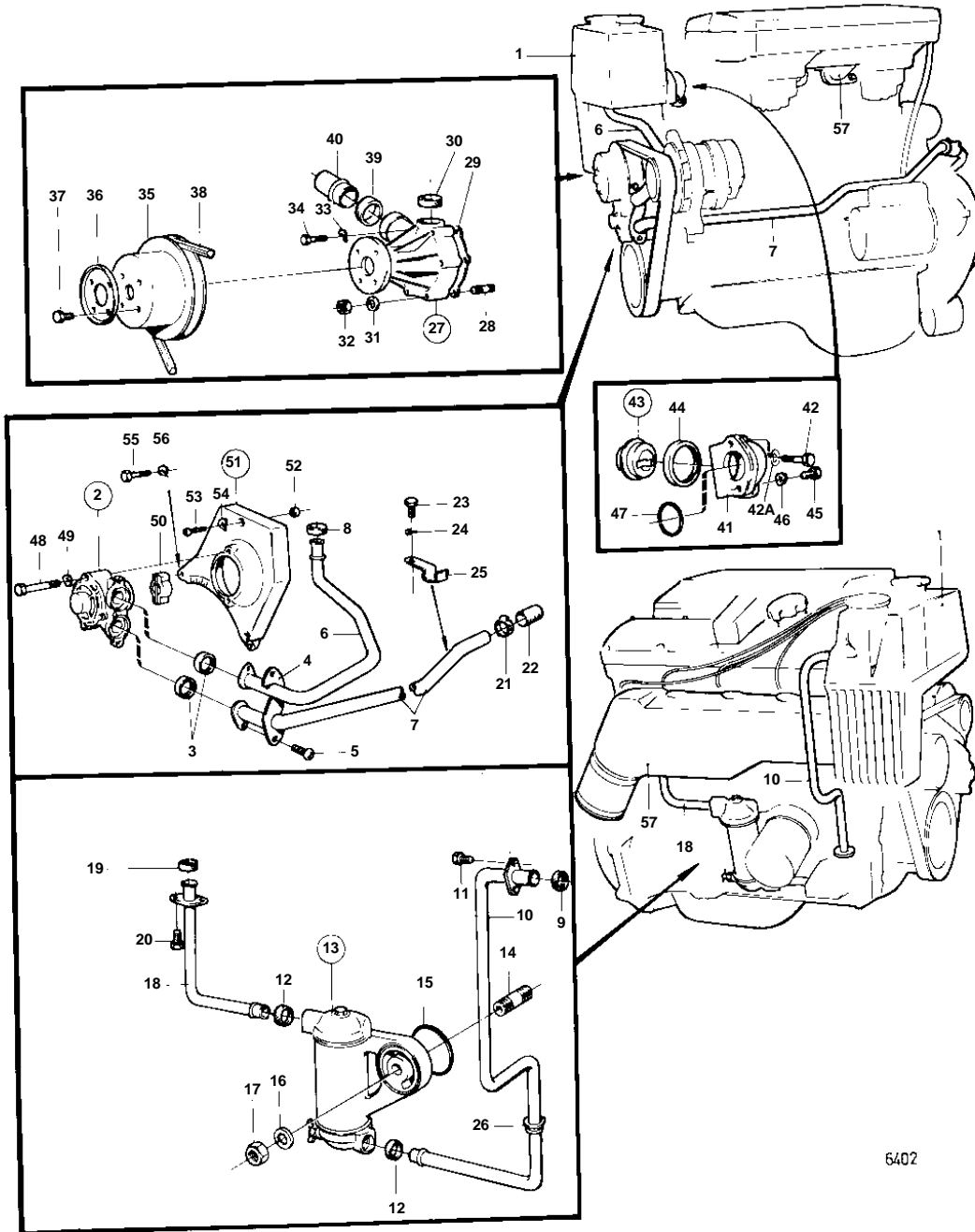


AQ145A,BB145A



6402

AQ145A,BB145A

| REF | PART NO. | QTY | DESCRIPTION                                   | SEE SEC.    | NOTES                         |
|-----|----------|-----|---|-------------|-------------------------------|
| 1   |          | 1   | HEAT EXCHANGER WITH INSTALLATION COMPONENTS   | 02B-0675    |                               |
| 2   | 828026   | 1   | Sea water pump                                | 02B-1150    |                               |
| 3   | 831622   | 2   | Gasket  | IK          |                               |
| 4   | 831903   | 1   | Flange  |             |                               |
| 5   | 956094   | 2   | Screw   |             |                               |
| 6   | 831906   | 1   | Tube  |             |                               |
| 7   | 834722   | 1   | Tube  |             | AQ145A/280                    |
|     | 855371   | 1   | Tube  |             | AQ145A/290                    |
| 8   | 418412   | 1   | Sealing ring                                  | IK 02B-0675 |                               |
| 9   | 831622   | 1   | Gasket  | IK          |                               |
| 10  | 831907   | 1   | Tube  |             |                               |
| 11  | 955271   | 2   | Screw   |             |                               |
| 12  | 418412   | 2   | Sealing ring                                  | IK          |                               |
| 13  | 834642   | 1   | Oil cooler                                    |             |                               |
|     |          |     |   | 02B-1300    |                               |
| 14  |          | 1   | SCREW UNION                                   |             | SEE GROUP 2A                  |
| 15  | 925255   | 1   | O-ring  | IK          |                               |
| 16  | 824589   | 1   | Washer  |             |                               |
| 17  | 191701   | 1   | Nut   |             |                               |
| 18  | 831908   | 1   | Tube  |             |                               |
| 19  | 831622   | 1   | Gasket  | IK          |                               |
| 20  | 955271   | 2   | Screw, SCREW HOSE CLAMP HOSE                  |             |                               |
|     |          |     |   |             | SEE GROUP 4A                  |
|     |          |     |   |             | SEE GROUP 4A                  |
| 23  | 955295   | 1   | Screw   |             | SEE GROUP 2A                  |
| 24  | 941907   | 1   | Spring washer                                 |             |                               |
| 25  | 834352   | 1   | Clamp   |             |                               |
| 26  | 834415   | 1   | Support ring                                  |             |                               |
| 27  | 828023   | 1   | Circulation pump, CIRCULATION PUMP COMPONENTS |             |                               |
|     |          |     | Bulletin 41-13                                | 41-13-EN    | Hose Kit for Circulation Pump |
| 27  |          |     |   |             |                               |
| 28  | 924055   | 2   | Stud  |             |                               |
| 29  | 463431   | 1   | Gasket  | IK          |                               |
| 30  | 1336255  | 1   | Sealing ring                                  | IK          | (463430)                      |
| 31  | 955892   | 2   | Washer  |             |                               |
| 32  | 955781   | 2   | Nut   |             |                               |
| 33  | 941906   | 4   | Spring washer                                 |             |                               |
| 34  | 955275   | 4   | Screw   |             |                               |
| 35  | 463629   | 1   | Pulley  |             |                               |
| 36  | 463301   | 1   | Washer  |             |                               |
| 37  | 946544   | 4   | Flange screw                                  |             |                               |
| 38  |          | 1   | DRIVE BELT KIT                                |             | SEE GROUP 3                   |
| 39  | 430020   | 1   | Sealing ring                                  | IK 02B-0675 |                               |
| 40  | 831897   | 1   | Tube  | 02B-0675    |                               |
| 41  | 831926   | 1   | Connection pipe                               |             |                               |
| 42  | 963196   | 2   | Screw   |             | MO-7705500                    |
|     | 963197   | 2   | Screw   |             | MO 7705501-                   |
| 42A | 955892   | 2   | Washer  |             | MO 7705501-                   |
| 43  | 875580   | 1   | Thermostat kit                                | IK          | 80%Z9C                        |
| 44  | 416033   | 1   | Sealing ring                                  | IK          | (418361)                      |
| 45  | 955297   | 2   | Screw   |             |                               |
| 46  | 941907   | 2   | Spring washer                                 |             |                               |
| 47  | 925091   | 1   | O-ring  | IK          |                               |
| 48  | 955278   | 2   | Screw   |             |                               |
| 49  | 941906   | 2   | Spring washer                                 |             |                               |
| 50  | 831009   | 1   | Cross piece                                   |             | SEE GROUP 2A                  |
| 51  | 828040   | 1   | Bridge  |             | SEE GROUP 2A                  |
| 52  | 828035   | 1   | Bushing                                       |             | SEE GROUP 2A                  |
| 53  | 959230   | 2   | Screw   |             | SEE GROUP 2A                  |
| 54  | 941907   | 2   | Spring washer                                 |             | SEE GROUP 2A                  |
| 55  | 955282   | 1   | Screw   |             | SEE GROUP 2A                  |

AQ145A,BB145A

| REF | PART NO. | QTY | DESCRIPTION                     | SEE SEC. | NOTES        |
|-----|----------|-----|---------------------------------|----------|--------------|
| 56  | 941906   | 1   | Spring washer                   |          | SEE GROUP 2A |
| 57  |          | 1   | INDUCTION- AND EXHAUST MANIFOLD | 02B-1775 |              |
|     |          |     |                                 |          |              |