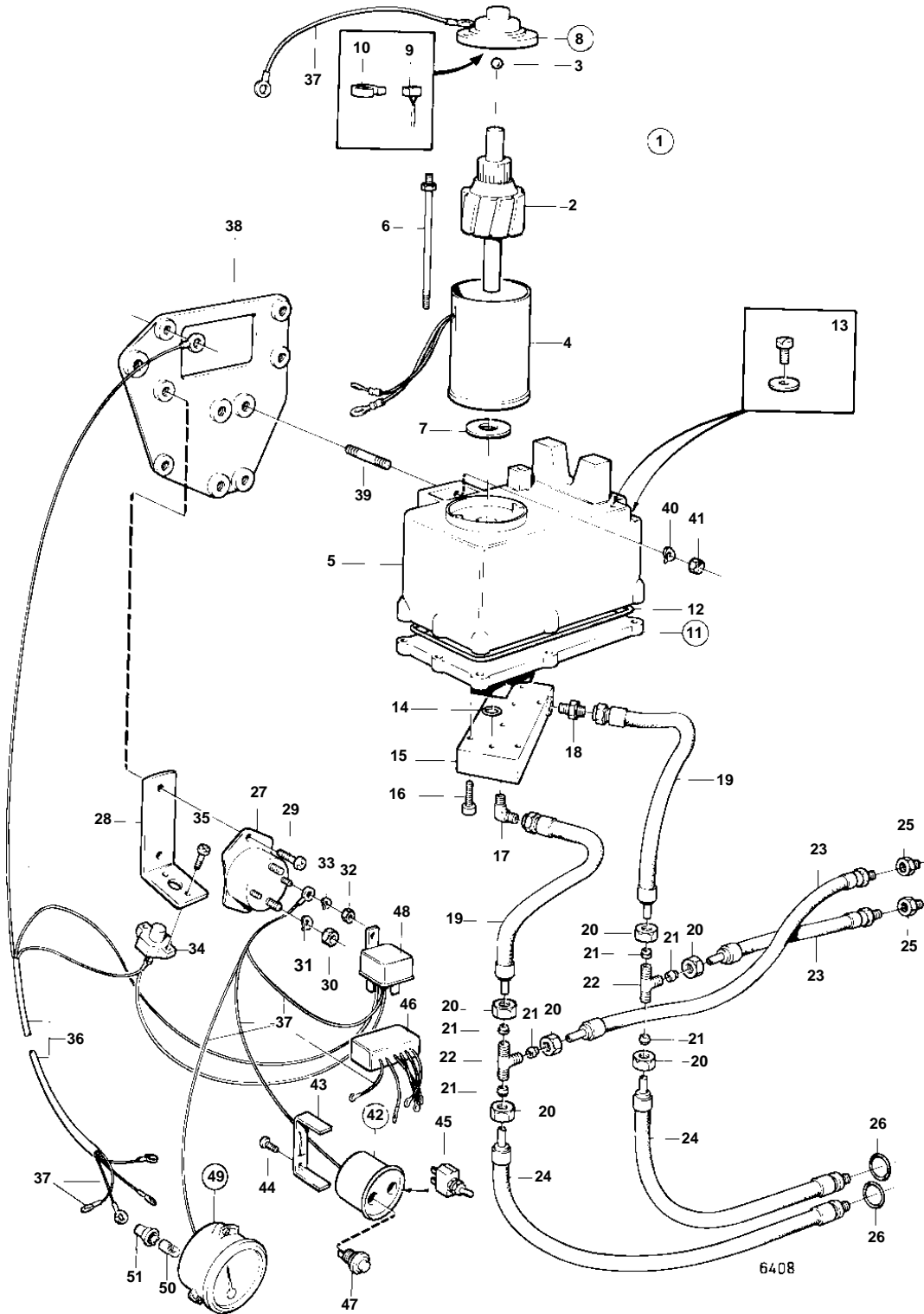


COMMON



COMMON

REF	PART NO.	QTY	DESCRIPTION	SEE SEC.	NOTES
1	850922	1	Hydraulic pump		REPLACED BY HYDRAULIC PUMP 852500 + BRACKET 852568 + 4EA SCREW 950161 + 4EA NUT 955826.
2	851086	1	• Rotor		
3	851087	1	• Ball		
4	851088	1	• Housing		
5	851089	1	• Oil reservoir		
6	851091	1	• Screw kit		
7	851092	X	• Washer kit		
8	851083	1	• Housing		
9	851084	1	• • Carbon brush set		
10	851090	1	• • Spring kit		
11	851080	1	• Pump unit		REPL BY 852563
12	851085	1	• • Sealing ring		
13	851079	1	• Screw kit		
14	851081	1	• O-ring		
15	851082	1	• Valve housing		
16	955641	4	• Screw		
17	850916	1	Nipple		
18	850903	1	Fitting		
19	850910	2	Hose		
20	941521	6	Nut		
21	956967	6	Fitting		
22	964034	2	T-nipple		
23	850909	2	Hose		
24	850908	2	Hose		
25	851042	2	Nipple	04A-0950	
26	941820	2	O-ring	04A-0950	
27	852565	2	Relay		(850923)
28	850905	1	Bracket		REPLACED BY BRACKET 852568 + 4EA SCREW 950161 + 4EA NUT 955826.
29	950046	3	Screw		
30	955834	4	Nut		
31	941907	4	Spring washer		
32	955844	4	Nut		
33	941905	4	Spring washer		
34	841178	1	Fuse		
35	950013	2	Screw		
36	850836	1	Cable		REPLACED BY CABLE 852191 + CABLE 852192.
37		X	CABLES AND CABLE TERMINALS		SEE GROUP 3
38	850803	1	Bracket		REPLACED BY BRACKET 852568 + 4EA SCREW 950161 + 4EA NUT 955826.
39	941872	4	Stud		
40	941906	4	Spring washer		
41	955825	4	Nut		
42	850989	1	Instrument panel		USA
	851871	1	Instrument panel		(851501) EXCL USA
43	850372	1	• Brace		
44	944201	2	• Screw		
45	814322	1	• Switch		
46	851870	1	• Trimming limiter		(851771)
47	852026	1	• Switch		
48	876040	1	• Relay kit		
49	851502	1	• Trim indicator		EXCL USA. INCLUDED ONLY IN 851501.
50	192451	1	• • Bulb		
51	841954	1	• • Bulb socket		