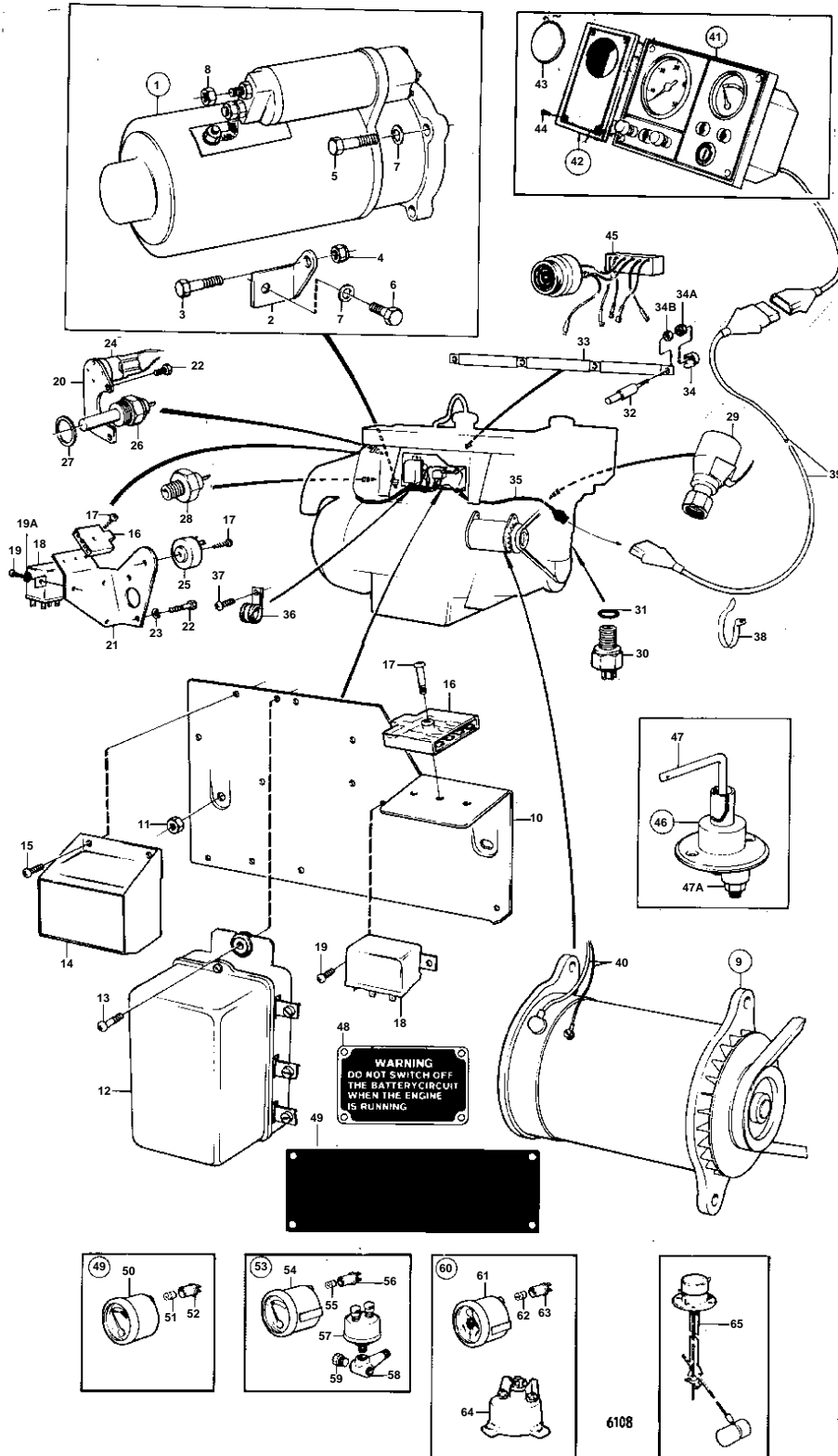


AQD21A,MD21A,MD21A/110S



AQD21A,MD21A,MD21A/110S

REF	PART NO.	QTY	DESCRIPTION	SEE SEC.	NOTES
1	826755	1	Starter motor		
				030-1550	
	829712	1	Starter motor		12V MOXXXX/150308-
			Bulletin 44-12	44-12-EN	Starter Motor for MD21/32
1				030-1700	
	870982	1			24V REPL BY 829649
				030-1600	
	829649	1	Starter motor		24V MOXXXX/133166-
				030-1650	
2	826770	1	Bracket		
3	955339	1	Screw		
4	963108	1	Nut		
5	955317	3	Screw		
6	955315	1	Screw		
7	960148	4	Washer		
8	955782	1	Nut		
	955780	1	Nut		
9		1	GENERATOR AND INSTALLATION COMPONENTS		12V
				030-1300	
		1	ALTERNATOR AND INSTALLATION COMPONENTS		12V, 24V
				030-1000	
10	829198	1	Bracket		MO-XXXX/103386
11	955782	2	Nut		SEE GROUP 2B
12	870671	1	Charge regulator		12V. REPLACED BY 1EA 841765 ALTERNATOR, 1EA 841812 PULLEY, 1EA 845021 TENSION IRON, 1EA 949607 WASHER, 1EA 955780 NUT, 1EA 955781 NUT AND 1EA 941905 RESILIENT WASHER.
13	958247	3	Screw		
14	843547	1	Regulator		12V, MO-XXXX/103386
	823234	1	Charge regulator, CHARGING RELAY		24V
				030-1000	
15	958244	3	Screw		MO-XXXX/103386
	958236	3	Screw		24V, MOXXXX/103387-
16	824823	1	Fuse box		
17	955142	1	Screw		MO-XXXX/103386
	831837	2	Screw		MO-XXXX/103386
18	870670	1	Relay		12V
	239883	1	Relay		24V
19	958236	2	Screw		
19A	960138	2	Washer		
20	829211	1	Bracket		MO-XXXX/103386
21	829347	1	Bracket		MOXXXX/103387-
22	946514	2	Screw		
23	941907	2	Spring washer		
24	870676	1	Resistor		12V, MO-XXXX/103386
	870677	1	Resistor		24V, MO-XXXX/103386
25	829637	1	Resistor		12V, MOXXXX/103387-
	829638	1	Resistor		24V, MOXXXX/103387-
26	827151	1	Temperature sensor		
27	957181	1	Gasket	IK	
28	1266085	1	Pressure switch		(672910)
29	1507899	1	Tachometer sensor		MO-XXXX/103386
30	1502028	1	Tachometer sensor		MOXXXX/103387-
31	960169	1	O-ring		
32		4	GLOW PLUG		12V REPL BY 870846. FOR CHARGING OF 2 BATTERIES,USE CHARGE DISTRIBUTOR 831793

7736850 - 030 - 030-0550

6108

Upd: 22 NOV 2005

AQD21A,MD21A,MD21A/110S

REF	PART NO.	QTY	DESCRIPTION	SEE SEC.	NOTES
32					MO-3112258/XXXX
	870846	4	Glow plug		12V, MO-3124096/XXXX
	829857	4	Glow plug		12V, MO3124097/XXXX-
	870681	4	Glow plug		24V
33		1	CONTACT STRIP		(818263) EARLY TYPE. MO-12769/XXXXX, REPLACED BY 841378.
	829799	3	Cable		LATE TYPE
34	818097	4	Switch guard		MO-3124096/XXXX
	829858	4	Protective cap		MO3124097/XXXX-
34A	955780	4	Nut		MO3124097/XXXX-
34B	941905	4	Spring washer		MO3124097/XXXX-
35	829195	1	Cable trunk		REPLACED BY 1EA 841765 ALTERNATOR, 1EA 841812 PULLEY, 1EA 845021 TENSION IRON, 1EA 949607 WASHER, 1EA 955780 NUT, 1EA 955781 NUT AND 1EA 941905 RESILIENT WASHER.
	829307	1	Cable trunk		MO-XXXX/103386
	829369	1	Cable trunk		MOXXXX/103387
36	952629	2	Clamp		REPLACED BY 1EA 841765 ALTERNATOR, 1EA 841812 PULLEY, 1EA 845021 TENSION IRON, 1EA 949607 WASHER, 1EA 955780 NUT, 1EA 955781 NUT AND 1EA 941905 RESILIENT WASHER.
	952629	1	Clamp		MO-XXXX/103386
	952631	1	Clamp		MOXXXX/103387-
37	958236	2	Screw		MO-XXXX/103386
38	827353	X	Clamping ring		
39	825738	X	Cable trunk, CABLE UNIT		MO-XXXX/103386
					L = 2500 MM
	843213	X	Extension cable'verl, EXTENSION CABLE		MOXXXX/103387-
					L = 2500 MM, (829404)
	820419	X	Cable, CABLE		MO-XXXX/103386
					L = 7000 MM
	843214	X	Cable trunk, CABLE UNIT		MOXXXX/103387-
					L = 7000 MM, (829406)
			EXTENSION CABLE LIFT DEVICE		SEE GROUP 9
40		X	CABLES AND CABLE TERMINALS	030-2200	
41	829164	1	Instrument panel		12V MO-XXXX/103386. ACC. TO CLASSIFICATION.
				030-1950	
	829370	1			MOXXXX/103387-. ACC. TO CLASSIFICATION.. MO 12770/XXXXX-.
				030-1950	
	829442	1	Instrument panel		12V MOXXXX/109884-. ACC. TO CLASSIFICATION.
				030-2000	
	829165	1	Instrument panel		24V MO-XXXX/103386. ACC. TO CLASSIFICATION.
				030-1950	
	829371	1			MOXXXX/103387-. ACC. TO CLASSIFICATION.. REPLACED BY 1EA 841768.
				030-1950	
	829443	1	Instrument panel		24V MOXXXX/109884-. ACC. TO CLASSIFICATION.
				030-2000	
42	840013	1	Instrument panel		
43	839128	1	· Plug		
44	944540	4	· Screw		
45	827940	1	Alarm kit		12V, SEE GROUP 9
	827941	1	Alarm kit		24V, SEE GROUP 9
46	870980	1	Switch		
47	243700	1	· Handle		
47A	955783	2	· Nut		
48	821042	1	Sign		
	837374	1	Sign		
49	834397	1	Voltmeter		

AQD21A,MD21A,MD21A/110S

REF	PART NO.	QTY	DESCRIPTION	SEE SEC.	NOTES
50	834374	1	· Voltmeter		
51	19923	1	· Bulb		
52	808175	1	· Bulb socket		
53	834398	1	Instrument		
54	834376	1	· Instrument		
55	19923	1	· Bulb		
56	808175	1	· Bulb socket		
57	881432	1	· Pressure sensor		
58	834391	1	· Nipple		
59	191026	1	· Plug		
60	834401	1	Rudder indicator		
61	834383	1	· Rudder indicator		
62	19923	1	· Bulb		
63	808175	1	· Bulb socket		
64	837772	1	· Rudder position sens		
65	834400	1	Tank gauge, TANK GAUGE DRINKING WATER		SEE GROUP 9
		1	FUEL		SEE GROUP 9