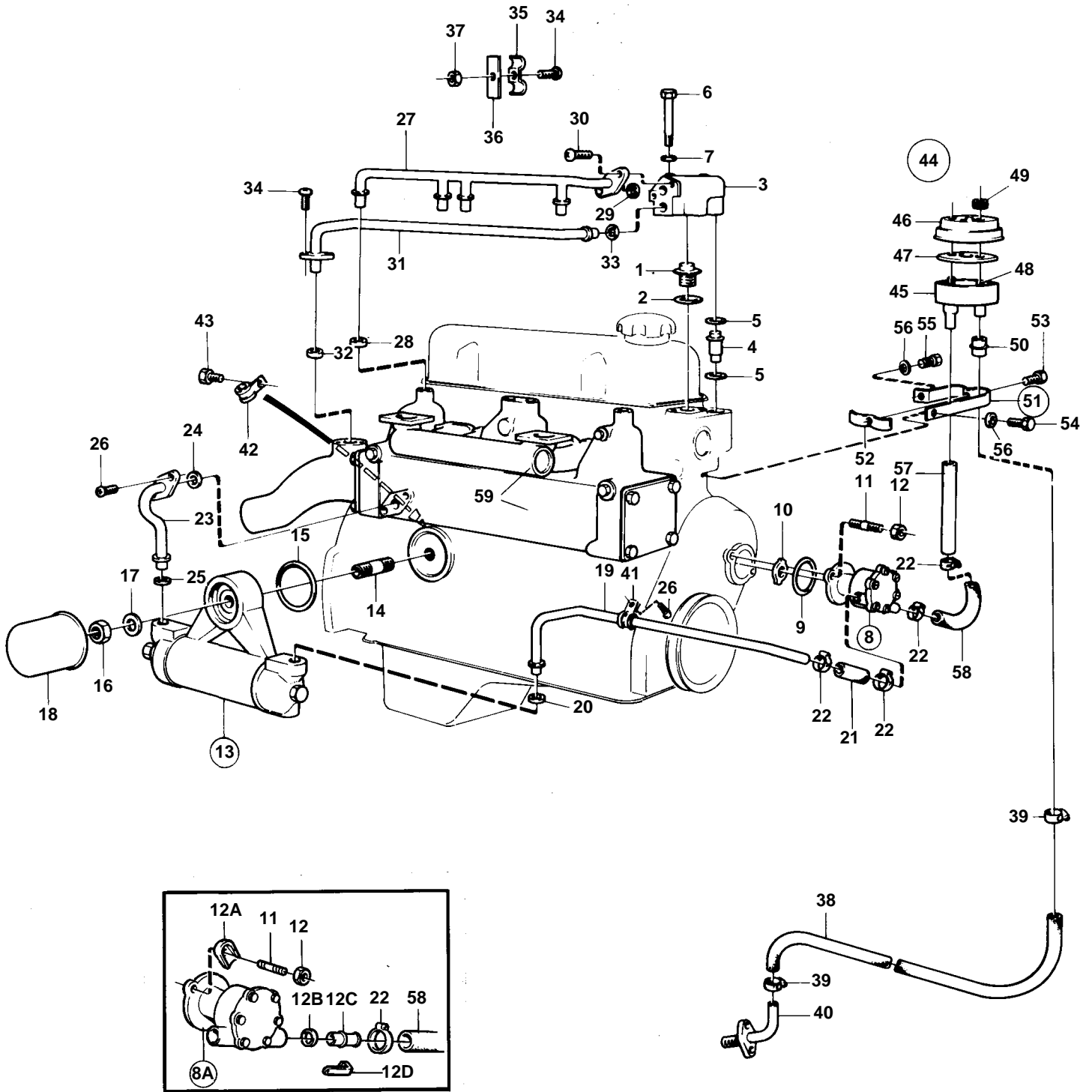


AQ130C,AQ130D



5930

**AQ130C,AQ130D**

REF	PART NO.	QTY	DESCRIPTION	SEE SEC.	NOTES
1	831040	1	Thermostat		
2	416033	1	Sealing ring	IK	(418361)
3	824555	1	Thermostat housing		
4	806215	1	Tube		
5	829714	2	Seal	IK	(418360)
6	955528	2	Screw		
7	120265	2	Washer		
8	825916	1	Water pump, COOLING WATER PUMP COOLING WATER PUMP		SHAFT AND SPACER RING 910396 REPLACES EARLY TYPE WITHOUT SPACER RING
8A	829895	1	Water pump		
				02B-1100	
9	925091	1	O-ring	IK	
10	806256	1	Companion flange		
11	953451	2	Stud		
12	950352	2	Lock nut		
12A	833878	2	Clamp		REPLACED BY 1EA 4804105, 1EA 350578.
12B	418411	2	Sealing ring		REPLACED BY 1EA 4804105, 1EA 350578.
12C	829901	2	Connection pipe		REPLACED BY 1EA 4804105, 1EA 350578.
12D	829898	2	Clamp		REPLACED BY 1EA 4804105, 1EA 350578.
13	824513	1	Oil cooler, OIL COOLER		
				02B-1300	
14	460232	1	Nipple		SEE GROUP 2A
15	925255	1	O-ring	IK	
16	191701	1	Nut		
17	824589	1	Washer		
18	1266286	1	Oil filter		SEE GROUP 2A
19	824546	1	Tube		
20	418411	1	Sealing ring	IK	
21	952969	1	Rubber hose		L = 55 MM
22	943472	8	Hose clamp		
23	824548	1	Tube		
24	418445	1	Sealing ring	IK	
25	418411	1	Sealing ring	IK	
26	950046	3	Screw		
27	824549	1	Tube		
28	829714	4	Seal	IK	
29	418445	1	Sealing ring	IK	
30	950046	2	Screw		
31	824673	1	Tube		
32	418445	1	Sealing ring	IK	
33	418411	1	Sealing ring	IK	
34	950046	4	Screw		
35	121580	2	Clamp		
36	824570	2	Washer		
37	950352	2	Lock nut		
38	943368	X	Rubber hose		L = 1000 MM
39	961666	2	Hose clamp		
40		1	WATER PIPE GROMMET		SEE GROUP 4A
41	952629	1	Clamp		
42	952633	1	Clamp		
43	955512	1	Screw		
44	831733	1	Strainer		
45		1	· HOUSING		
46	831974	1	· Cover		
47	831737	1	· Strainer		
48		2	· SCREW		
49	831738	2	· Nut		
50	831752	1	· Tube		
51	831750	1	Bracket		
52		1	· BRACE		
53	834371	1	· Screw		
54	940115	1	Screw		3/8-16 UNC

AQ130C,AQ130D

REF	PART NO.	QTY	DESCRIPTION	SEE SEC.	NOTES
54	955317	1	Screw		M10
55	940114	1	Screw		3/8-16 UNC
	955315	1	Screw		M10
56	942336	2	Spring washer		I.D = 10 MM
	941908	2	Spring washer		I.D = 10,5 MM
57	831843	1	Tube		
58	952969	X	Rubber hose		L = 55 MM
59			INDUCTION- AND EXHAUST MANIFOLD	02B-1550	
			EXHAUST PIPE SYSTEM FOR AQ DRIVE 100B	02B-1650	
				02B-1700	