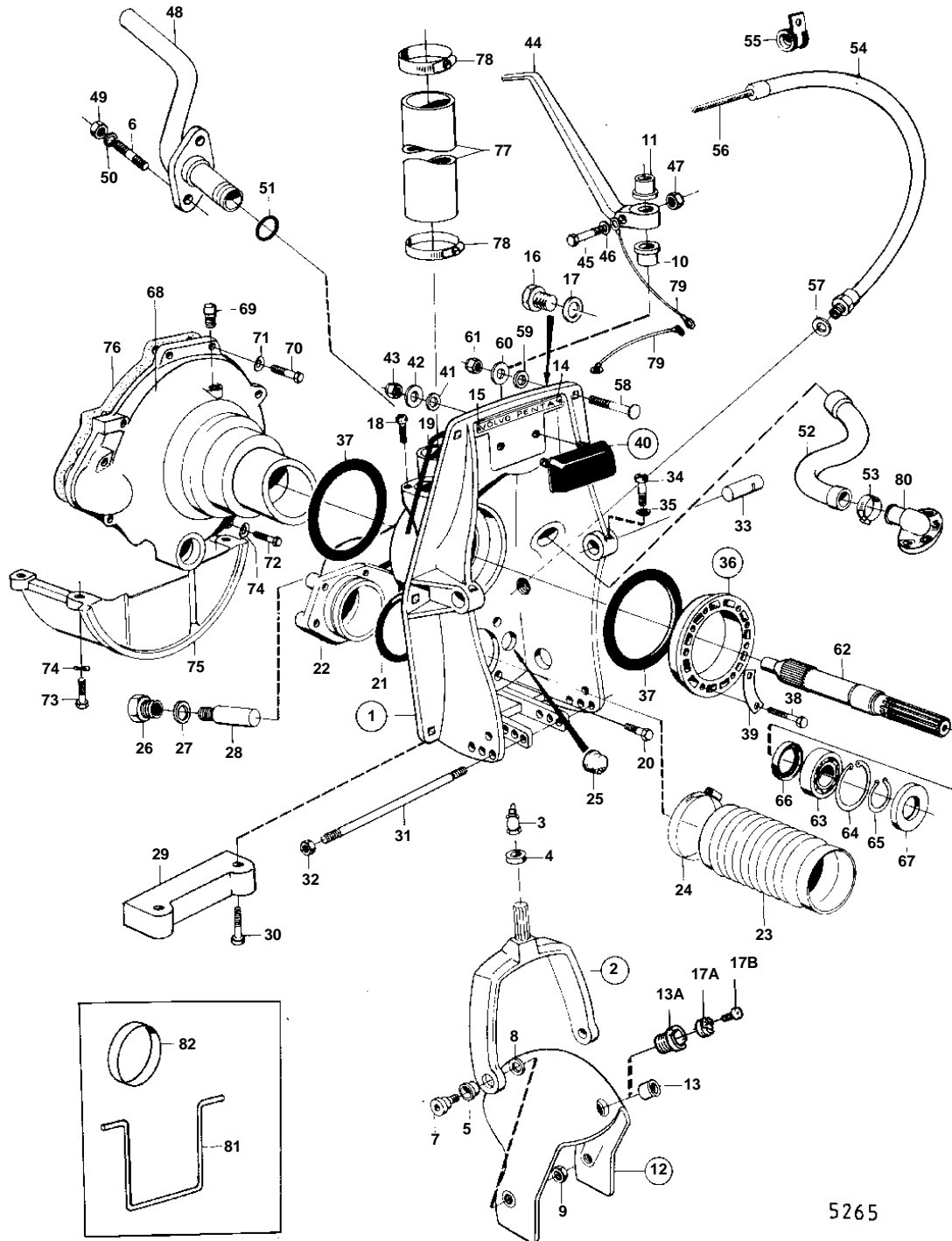


AQ165A,AQ170A



5265

AQ165A,AQ170A

REF	PART NO.	QTY	DESCRIPTION		NOTES
1		1	SHIELD		REPLACED BY 1EA 875671, 1EA 851265, 1EA 851263, 2EA 941807, 1EA 875531, 1EA 839459, 1EA 940097, 1EA 955537.
	875532	1	Clamping ring		MOXXXX/80275-. FOR STEERING YOKE AND LEVER WITH SPLINES.. REPLACED BY 1EA 875671 1EA 851265 1EA 851263 2EA 941807.
					-XXXX/187079
	875671	1	Transom shield		MOXXXX/187080-
2		1	· STEERING YOKE		EARLY TYPE STEERING YOKE AND LEVER WITHOUT SPLINES, REPLACED BY 1EA 839377, 1EA 832587, 1EA 832586, 1EA 940162
	839377	1	· Steering yoke		FOR STEERING YOKE AND LEVER WITH SPLINES.
3	914169	1	· · Lubricating nipple		
4	814359	1	· · Ring	IK	
5	897243	2	· · Bushing		EARLY TYPE
	814640	2	· · Bushing		LATE TYPE
6	941872	2	· Stud		
7	897798	2	· Shoulder screw		
8	897244	2	· Washer		
9	943152	2	· Nut		
10	897731	2	· Bushing		EARLY TYPE STEERING YOKE AND LEVER WITHOUT SPLINES, REPLACED BY 1EA 839377, 1EA 832587, 1EA 832586, 1EA 940162
	897731	1	· Bushing		LOWER. FOR STEERING YOKE AND LEVER WITH SPLINES.
11	832586	1	· Bushing		UPPER. FOR STEERING YOKE AND LEVER WITH SPLINES.
12	814684	1	· Protective helmet		MO-XXXX/187079
	851267	1	· Protective helmet		MOXXXX/187080-
13	897461	1	· · Bushing		FOR 1/2"- 13UNC SCREW.
13A	851262	1	· · Bushing		FOR BEARING PIN WITH 2 BOLTS.
14	832608	1	· Sign		
15	804269	2	· Drive screw		
16	897744	1	· Plug		MOXXXX/94050-
17	897745	1	· Gasket		MOXXXX/94050-
17A	852705	1	Pivot pin, BEARING TAP		(851263)
					MOXXXX/187080-
17B	941807	2	Screw		MOXXXX/187080-
18	956568	2	Screw		SEE GROUP 9
19	897726	1	Sealing strip		
20	959967	4	Screw		
21	925256	1	O-ring	IK	
22	824527	1	Hull fitting		
23	897631	1	Rubber bellows		
24	961675	2	Hose clamp		
25	814473	1	Rubber plug		
26	897744	1	Plug		
27	897745	1	Gasket		
28		1	ZINK ELECTRODE		EARLY TYPE REPLACED BY 1EA 832598, 2EA 959438.
29	832598	1	Zinc electrode		
30	959438	2	Screw		
31	814301	1	Adjuster pin		
32	814357	2	Flange nut		
33	897831	2	Pivot pin		
34	941873	2	Screw		
35	941670	2	Washer		
36	806310	1	Clamping ring		
37	804190	2	· Rubber ring		
38	191844	6	· Screw		
39	806624	3	· Striker plate		
40	875379	1	Rubber cushion		
41	832565	2	· Gasket		
42	960142	2	· Washer		
43	950364	2	· Nut		
44	897724	1	Spindle arm		EARLY TYPE STEERING YOKE AND LEVER WITH SPLINES.
	832587	1	Spindle arm		FOR STEERING YOKE AND LEVER WITH SPLINES.

7736850 - 04A - 04A-1050

5265

Upd: 22 NOV 2005

AQ115, BB115, MB20, AQ130, AQ165, BB165, AQ170, BB170, AQD21A, MD21A

VOLVO
PENTA

AQ165A,AQ170A

REF	PART NO.	QTY	DESCRIPTION	NOTES
45	955712	1	Screw	EARLY TYPE STEERING YOKE AND LEVER WITH SPLINES.
	940162	1	Screw	FOR STEERING YOKE AND LEVER WITH SPLINES.
	955536	1	Screw	LATE TYPE WITH GROUND CABLE ON STEERING LEVER.
46	940097	1	Washer	LATE TYPE WITH GROUND CABLE ON STEERING LEVER.
47	950386	1	Nut	EARLY TYPE STEERING YOKE AND LEVER WITH SPLINES.
48	831111	1	Hull fitting	SEE GROUP 2B
49	950352	2	Lock nut	
50	955893	2	Washer	
51	925063	1	O-ring	
52	897599	1	Hose	
53	961668	2	Hose clamp	
54	839091	1	Hose	
55	952635	1	Clamp	
56		X	CONTROL CABLE	SEE GROUP 9
57	897745	1	Gasket	
58	943426	6	Screw	
59	850418	6	O-ring	(814166)
60	190878	6	Washer	
61	940176	6	Nut	
62		1	PRIMARY SHAFT	MO-XXXX/62358. REPLACED BY 1EA 832941 1EA 832439.
	832941	1	Shaft	MOXXXX/62359-
63	19258	1	Ball bearing	D = 55 MM MO-XXXX/62358
	11013	1	Ball bearing	D = 62 MM MOXXXX/62359-
64	914530	2	Lock ring	
65	914462	1	Lock ring	
66	946242	1	Sealing ring	
67	946242	1	Sealing ring	
68		1	FLYWHEEL HOUSING	MO-XXXX/62358. REPLACED BY 1EA 831619, 1EA 832941, 1EA 11013, 1EA 958860 , 2EA 914533.
	831619	1	Flywheel housing	MOXXXX/62359-
69	180019	1	Lubricator	
70	940160	2	Screw	L = 38 MM EARLY TYPE
	955549	2	Screw	L = 45 MM EARLY TYPE
	940160	4	Screw	L = 38 MM LATE TYPE
71	941909	4	Spring washer	
72	940162	2	Screw	L = 38 MM
73	955535	4	Screw	L = 32 MM
74	942336	6	Spring washer	
75	430116	1	Bracket	
76	831075	1	Gasket	EARLY TYPE
77	952986	X	Rubber hose	L = 130 MM SEE GROUP 2B
78	943482	2	Hose clamp	(951799) SEE GROUP 2B
79		X	CABLES AND CABLE TERMINALS	SEE GROUP 3
80	851766	1	Hose connection	(832846) SEE GROUP 4C
81	897824	1	Conveyer stop	FOR TRANSPORT.
82	944738	1	Plastic plug	FOR TRANSPORT.
	875192	1	Gasket kit	SEE GROUP 10