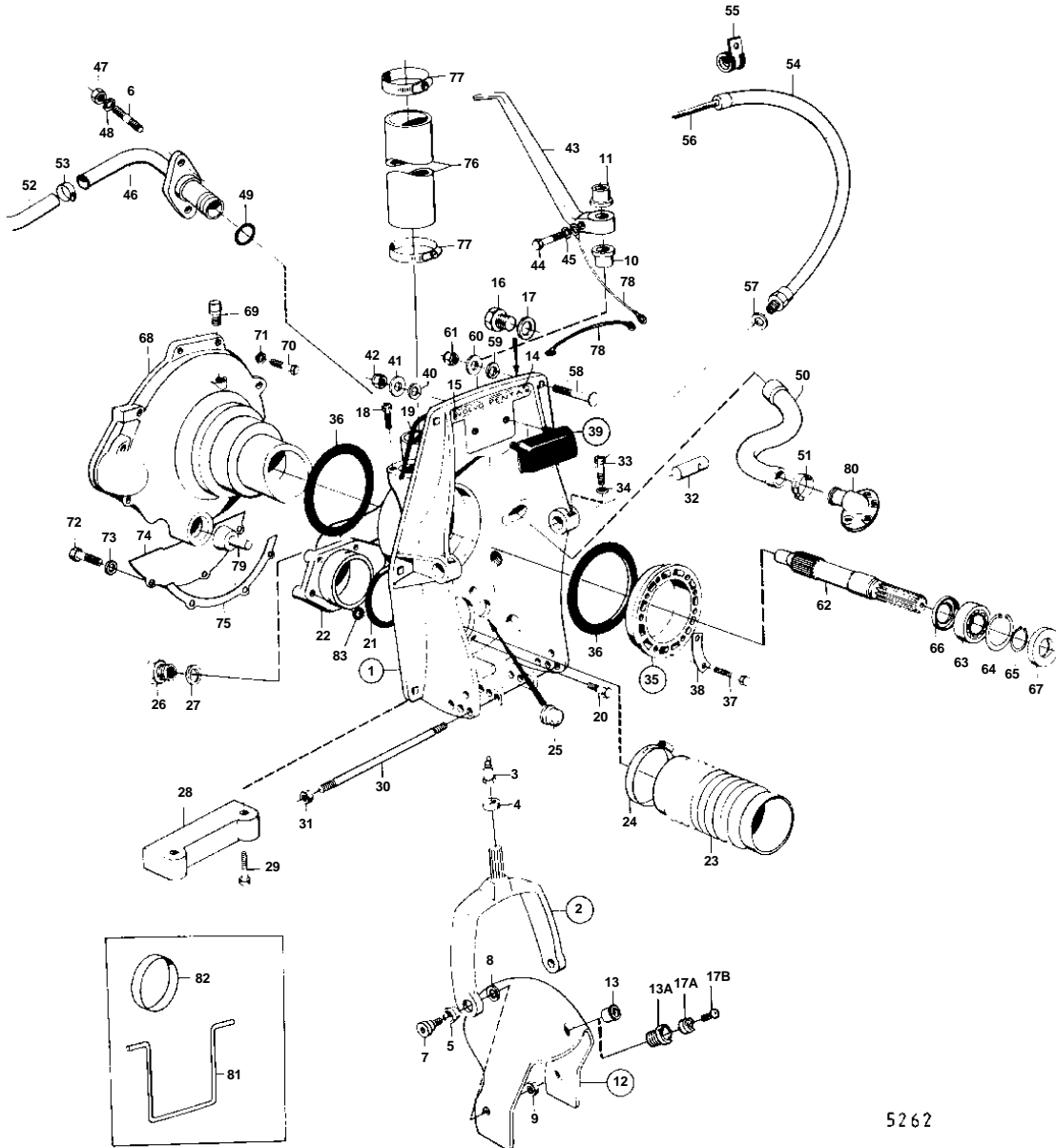


AQ130C



AQ130C

REF	PART NO.	QTY	DESCRIPTION	SEE SEC.	NOTES
1		1	SHIELD		REPLACED BY 1EA 875671, 1EA 851265, 1EA 851263, 2EA 941807, 1EA 875531, 1EA 839459, 1EA 940097, 1EA 955537.
	875532	1	Tensioning ring		FOR STEERING YOKE AND LEVER WITH SPLINES., REPLACED BY 1EA 875671 1EA 851265 1EA 851263 2EA 941807., MOXXXX/80275-
					-XXXX/187079
	875671	1	Shield		MOXXXX/187080-
2	839377	1	• Steering yoke		FOR STEERING YOKE AND LEVER WITH SPLINES., MO-XXXX/80274
	839441	1	• Steering yoke		FOR STEERING YOKE AND LEVER WITH SPLINES., MOXXXX/80275-
3	914169	1	• • Lubricating nipple		
4	814359	1	• • Ring		MO-XXXX/80274
	839195	1	• • Ring		MOXXXX/80275-
			Bulletin 48-23	48-23-EN	Seal Ring
5	814640	2	• • Bushing		
6	941872	2	• Stud		
7	897798	2	• Shoulder screw		
8	897244	2	• Washer		
9	943152	2	• Nut		
10	897731	1	• Bushing		FOR STEERING YOKE AND LEVER WITH SPLINES., MO-XXXX/80274
	832651	1	• Bushing		FOR STEERING YOKE AND LEVER WITH SPLINES., MOXXXX/80275-
11		1	• Bushing		FOR STEERING YOKE AND LEVER WITH SPLINES., MO-XXXX/80274
	832652	1	• Bushing		FOR STEERING YOKE AND LEVER WITH SPLINES., MOXXXX/80275-
12	814684	1	• Protective helmet		MO-XXXX/187079
	851267	1	• Protective helmet		MOXXXX/187080-
13	814641	1	• • Bushing		FOR 1/2"- 13UNC SCREW.
13A	851262	1	• • Bushing		FOR BEARING PIN WITH 2 BOLTS.
14	832608	1	• Plate		
15	804269	2	• Drive screw		
16		1	• Plug		MOXXXX/94050-
17	897745	1	• Gasket		MOXXXX/94050-
17A	852705	1	Pivot pin, BEARING TAP		(851263)
17					MOXXXX/187080-
					REPL BY 852705
17B	941807	2	Hex. socket screw		MOXXXX/187080-
18	956568	2	Hex. socket screw		SEE GROUP 9
19	897726	1	Sealing strip		
20	959967	4	Hexagon screw		
21	925256	1	O-ring		
22	897780	1	Exhaust grommet		
23	897631	1	Exhaust bellows		
24	961675	2	Hose clamp		
25	814473	1	Rubber plug		
26		1	Plug		
27	897745	1	Gasket		
28	832598	1	Zinc anode		
29	959438	2	Hex. socket screw		
30	814301	1	Adjusting pin		
31	814357	2	Flange nut		
32	897831	2	Pivot pin		
33	941873	2	Hex. socket screw		
34	941670	2	Washer		
35	806310	1	Mounting kit		
36	804190	2	• Rubber ring		
37	191844	6	• Hexagon screw		
38	806624	3	• Striker plate		
39	875379	1	Rubber cushion		MO-XXXX/80274

AQ130C

REF	PART NO.	QTY	DESCRIPTION	SEE SEC.	NOTES
39	875531	1	Rubber cushion		MOXXXX/80275-
40	832565	2	· Gasket		
41	960142	2	· Washer		
42	950364	2	· Lock nut		
43		1	Spindle arm		FOR STEERING YOKE AND LEVER WITH SPLINES., MO-XXXX/80274
	839459	1	Spindle arm		FOR STEERING YOKE AND LEVER WITH SPLINES., MOXXXX/80275-
44	955536	1	Hexagon screw		LATE TYPE WITH GROUND CABLE ON STEERING LEVER., MO-XXXX/80274
	955537	1	Hexagon screw		LATE TYPE WITH GROUND CABLE ON STEERING LEVER., MOXXXX/80275-
45	940097	1	Washer		LATE TYPE WITH GROUND CABLE ON STEERING LEVER.
46		1	Grommet		SEE GROUP 2B
47	950352	2	Lock nut		
48	955893	2	Washer		
49	925063	1	O-ring		
50		1	Hose		
51	961668	2	Hose clamp		
52	943368	X	Rubber hose		SEE GROUP 2B
53	961666	2	Hose clamp		SEE GROUP 2B
54	839091	1	Protecting hose		
55	952635	1	Clamp		
56		X	CONTROL CABLE		SEE GROUP 9
57	897745	1	Gasket		
58	943426	6	Screw		
59	850418	6	O-ring		(814166)
60	190878	6	Washer		
61	940176	6	Hexagon nut		
62	832941	1	Spindle		
63	11013	1	Ball bearing		
64	914533	2	Snap ring		
65	914462	1	Snap ring		
66	946242	1	Sealing ring		
67	958860	1	Sealing ring		
68		1	Flywheel housing		
69		1	Lubricator		
70	940160	4	Hexagon screw		7/16" - 14 UNC
	955342	4	Hexagon screw		M12
71	941909	4	Spring washer		I.D = 11,5 MM
	940280	4	Spring washer		I.D = 13,5 MM
72	955523	3	Hexagon screw		
73	941907	3	Spring washer		
74		1	Cover plate		
75		1	Gasket		MO-XXXX/111481
76	952980	X	Hose		L = 170 MM SEE GROUP 2B
77	943480	4	Hose clamp		(951797) SEE GROUP 2B
78		X	CABLES AND CABLE TERMINALS		SEE GROUP 3
79	804210	1	Rubber cushion		
80	851766	1	Hose connection		SEE GROUP 4C
81	897824	1	Transport lock		FOR TRANSPORT.
82	944738	1	Plug		FOR TRANSPORT.
83	925055	4	O-ring		
	875192	1	Gasket kit		SEE GROUP 10