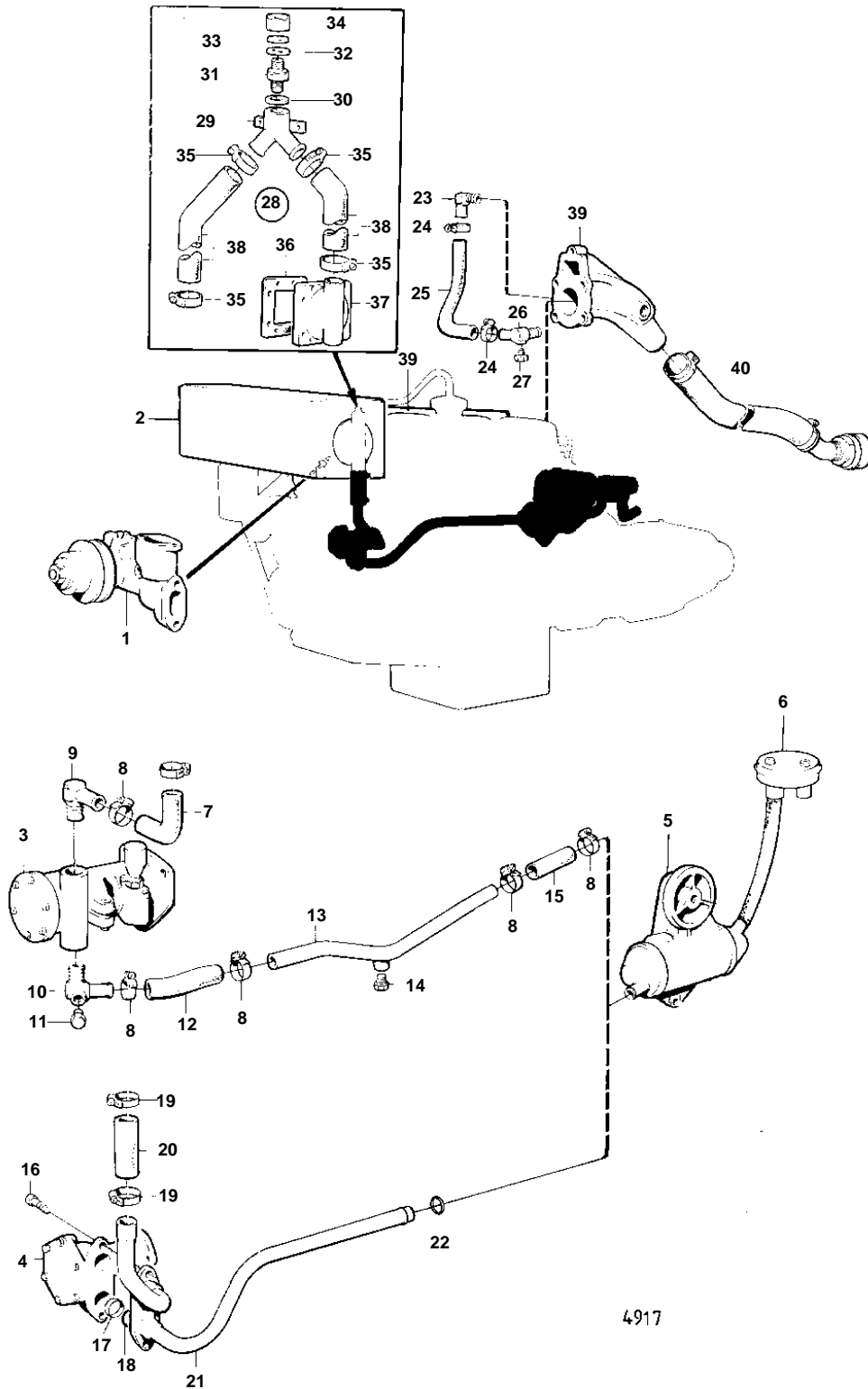


AQD21A



**AQD21A**

| REF | PART NO. | QTY | DESCRIPTION  | SEE SEC.       | NOTES                      |
|-----|----------|-----|--|----------------|----------------------------|
| 1   |          | 1   | CIRKULATION PUMP AND INSTALLATION COMPONENTS               | 12801          |                            |
| 2   |          | 1   | HEAT EXCHANGER WITH THERMOSTAT AND INSTALLATION COMPONENTS | 12799          | MO-XXXX/61164              |
|     |          | 1   | HEAT EXCHANGER WITH THERMOSTAT AND INSTALLATION COMPONENTS | 12800          | MOXXXX/61165-              |
| 3   |          | 1   | SEA WATER PUMP AND INSTALLATION COMPONENTS                 | 12802          | MO-XXXX/103386             |
| 4   |          | 1   | SEA WATER PUMP AND INSTALLATION COMPONENTS                 | 12776          | MOXXXX/103387-             |
| 5   |          | 1   | OIL COOLER WITH INSTALLATION COMPONENTS                    | 12798          |                            |
| 6   |          | 1   | SEA WATER FILTER AND INSTALLATION COMPONENTS               | 12798          |                            |
| 7   | 826224   | 1   | Hose   |                | MO-XXXX/103386             |
| 8   | 943475   | 6   | Hose clamp, CLAMP  |                | (951791)<br>MO-XXXX/103386 |
|     |          |     |  | 12798          |                            |
| 9   |          | 1   | Elbow nipple   |                | MO-XXXX/103386             |
| 10  |          | 1   | Hose nipple  |                | MO-XXXX/103386             |
| 11  | 192134   | 1   | Plug   |                | MO-XXXX/103386             |
| 12  |          | X   | Rubber hose  |                | MO-XXXX/103386 L = 120 MM  |
| 13  |          | 1   | Tube   |                | MO-XXXX/103386             |
| 14  | 180759   | 1   | Plug   |                | MO-XXXX/103386             |
| 15  |          | X   | Rubber hose  |                | MO-XXXX/103386 L = 80 MM   |
| 16  | 959437   | 2   | Hex. socket screw  |                | MOXXXX/103387-             |
| 17  | 423187   | 2   | Ring retainer  |                | MOXXXX/103387-             |
| 18  | 831617   | 2   | Sealing ring   |                | MOXXXX/103387-             |
| 19  | 943475   | 2   | Hose clamp   |                | (951791)<br>MOXXXX/103387- |
| 20  |          | X   | Rubber hose  |                | MOXXXX/103387- L = 60 MM   |
| 21  |          | 1   | Coolant pipe   |                | MOXXXX/103387-             |
| 22  | 418412   | 1   | Sealing ring, RING   | 12798          | MOXXXX/103387-             |
| 23  |          | 1   | Elbow nipple   |                |                            |
| 24  | 961668   | 1   | Hose clamp   |                |                            |
| 25  | 952972   | X   | Hose   |                | L = 500 MM                 |
| 26  |          | 1   | Hose nipple  |                |                            |
| 27  | 192134   | 1   | Plug   |                |                            |
| 36  |          |     |  | 12800          |                            |
| 37  | 825683   | 1   | End plate, HEAT EX COVER                                   | 12799<br>12800 |                            |
| 38  |          | X   | Rubber hose  |                |                            |
| 39  |          |     | INDUCTION- AND EXHAUST MANIFOLD                            | 12791          |                            |
| 40  |          |     | WATER COOLED EXHAUST LINE                                  |                | SEE GROUP 9                |
|     |          |     | WATER COOLED EXHAUST MUFFLER                               |                | SEE GROUP 9                |