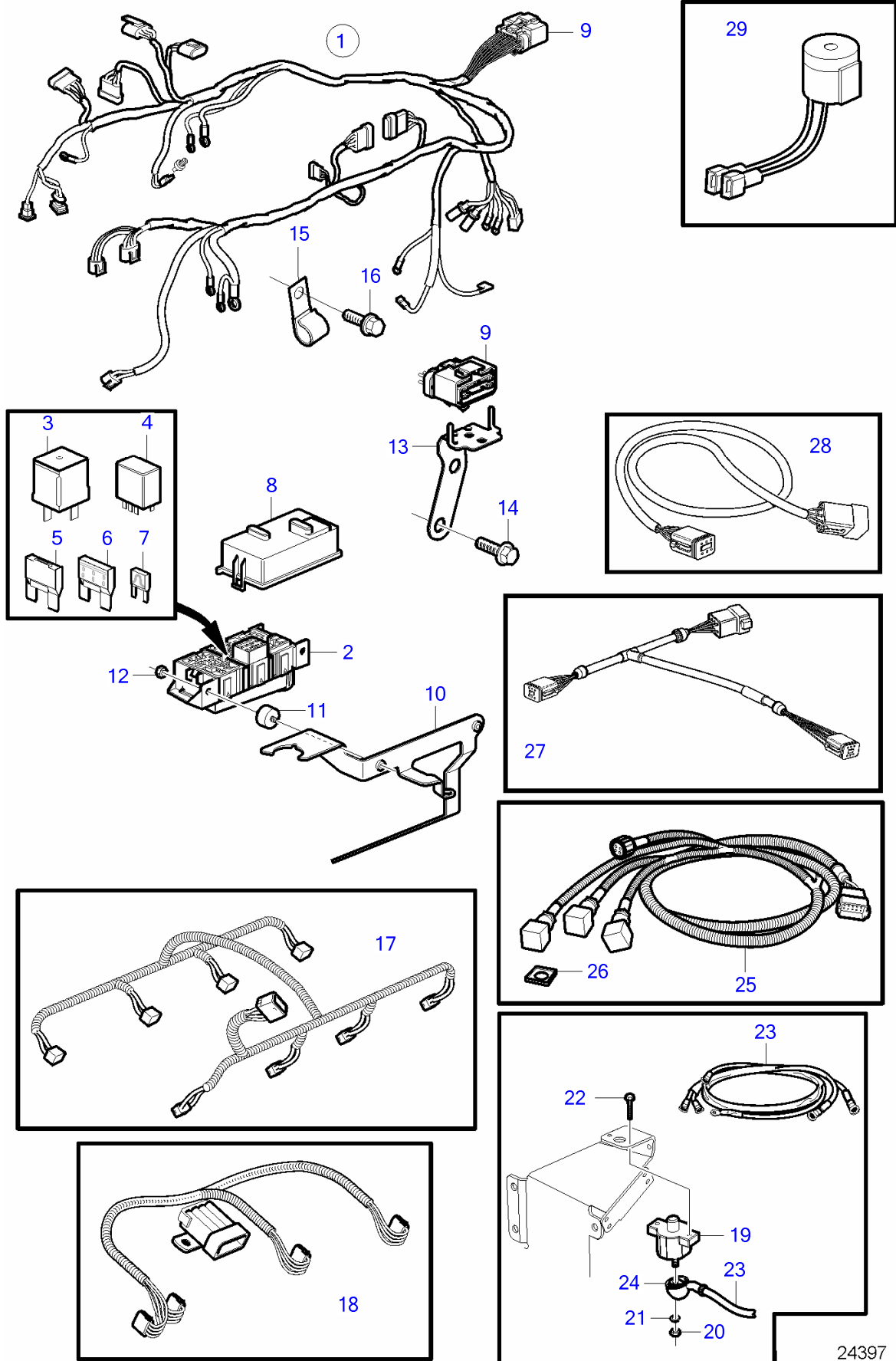


8.1IPSCE-JF, 8.1IPSCE-MF



8.1IPSCE-JF, 8.1IPSCE-MF

| REF | PART NO. | QTY | DESCRIPTION | NOTES |
|-----|-----------|-----|-------------------------------|--------------------------------------|
| 1 | 3848910 | 1 | Wiring harness | |
| 2 | | 1 | • Fuse box | not sold separately |
| 3 | 3858809 | 3 | • Relay | |
| 4 | 3841366 | 2 | • Relay | |
| 5 | | 1 | • Relay | Not for IPS |
| 6 | 3841370 | 1 | • Fuse | 20A |
| | 3841371 | 1 | • Fuse | 40A |
| 7 | 3841373 | 1 | • Fuse | 5A |
| | 3863403 | 1 | • Fuse | 7.5A |
| | 3841372 | 1 | • Fuse | 10A |
| | 3861373 | 1 | • Fuse | 15A |
| | 3861374 | 1 | • Fuse | 20A |
| 8 | | 1 | • Cover plate | not sold separately |
| 9 | | 1 | • Connector, 14 pin | not sold separately |
| 10 | 21142245 | 1 | Bracket | |
| 11 | 3840402 | 2 | Mounting base | |
| 12 | 3852118 | 2 | Nut | |
| 13 | 3886663 | 1 | Bracket | |
| 14 | 946441 | 2 | Flange screw | |
| 15 | (3852146) | 2 | Clamp | Obsolete part, D=.375" (9.5mm) |
| | 3852434 | 1 | Clamp | D=.750" (19.0mm) |
| | 3852490 | 1 | Attaching clamp | D=1.44" (36mm) |
| 16 | 946441 | 2 | Flange screw | |
| 17 | 3861297 | 1 | Wiring harness, fuel injector | |
| 18 | 3863052 | 2 | Wiring harness, ignition | |
| 19 | 856337 | 1 | Automatic fuse | 50A |
| 20 | | 2 | • Nut | not sold separately |
| 21 | | 2 | • Washer | not sold separately |
| 22 | 3853620 | 2 | Hexagon screw | |
| 23 | 3848909 | 1 | Wiring harness | Alternator, Circuit breaker |
| 24 | | 1 | • Boot | not sold separately |
| 25 | | 1 | Wiring harness | Shift solenoids, To 12 pin on engine |
| 26 | | 3 | • Seal | not sold separately |
| 27 | 3588972 | 1 | Cable kit | Tee, PCU-HCU-IPS |
| 28 | 3842733 | 1 | Extension cable/verl | Engine-PCU-IPS |
| 29 | 3883708 | 1 | Alarm kit | Mounted at the helm. |