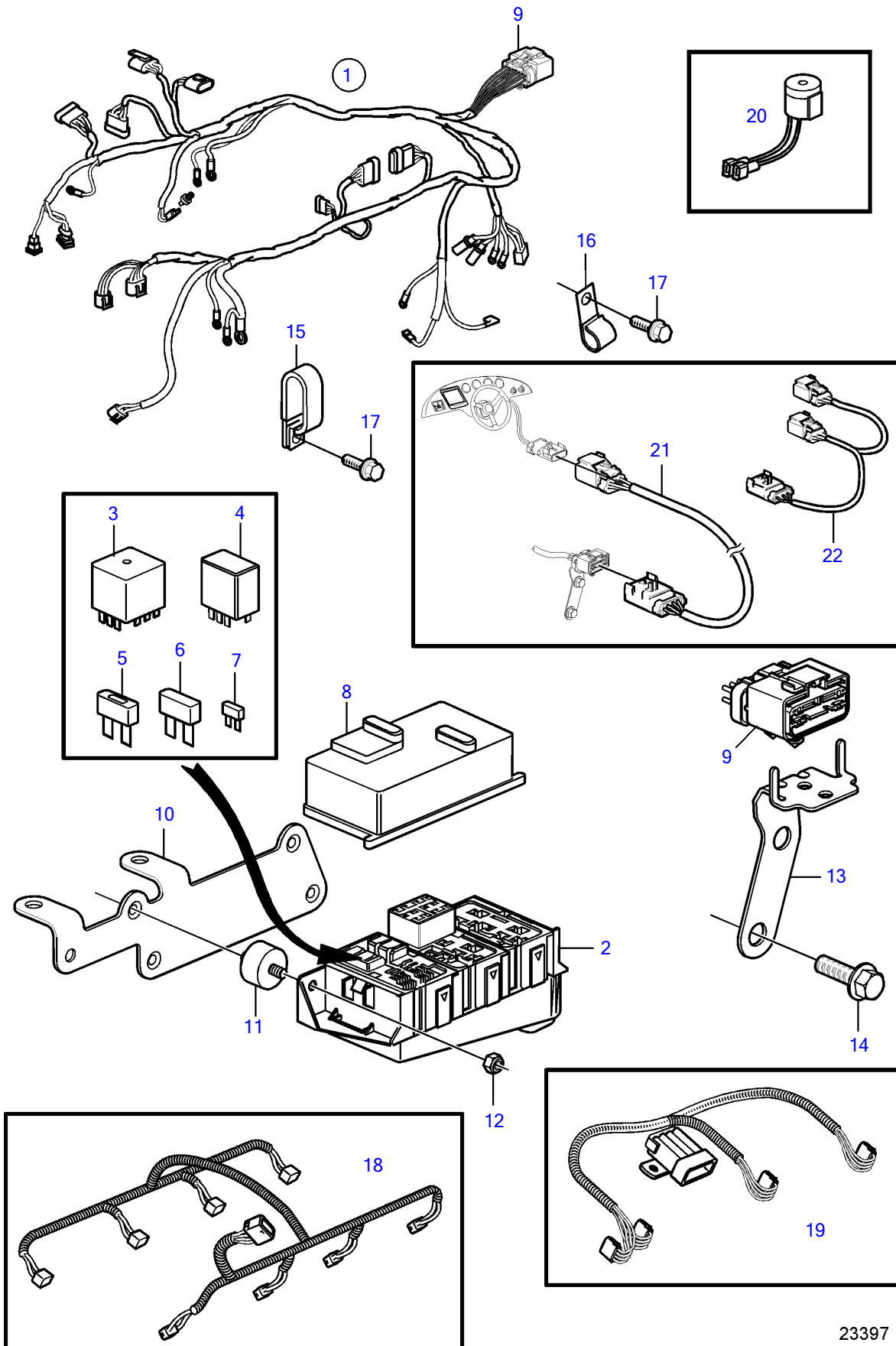


8.1Gi-J, 8.1Gi-JF, 8.1GXi-J, 8.1GXi-JF



23397

8.1Gi-J, 8.1Gi-JF, 8.1GXi-J, 8.1GXi-JF

REF	PART NO.	QTY	DESCRIPTION	NOTES
1	3848898	1	Wiring harness	
2		1	• Fuse box	not sold separately
3	3858809	3	• Relay	
4	3841366	2	• Relay	
5	3884849	1	• Fuse	40A
6	3841370	1	• Fuse	20A
	3841371	1	• Fuse	40A
7	3841373	1	• Fuse	5A
	3863403	1	• Fuse	7.5A
	3841372	1	• Fuse	10A
	3861373	1	• Fuse	15A
	3861374	1	• Fuse	20A
8		1	• Cover plate	not sold separately
9		1	• Connector, 14 pin	not sold separately
10	3843887	1	Bracket	
11	3840402	2	Mounting base	
12	3852118	2	Nut	
13	3886663	1	Bracket	
14	946441	2	Flange screw	
15	3860075	1	Attaching clamp	
16	(3852146)	2	Clamp	Obsolete part, D=.375" (9.5mm)
	3852434	1	Clamp	D=.750" (19.0mm)
	3852490	1	Attaching clamp	D=1.44" (36mm)
	3853312	1	Clamp	
17	946441	2	Flange screw	
18	3861297	1	Wiring harness, fuel injector	
19	3863052	2	Wiring harness, ignition	
20	3817974	1	Alarm	Mounted at the helm.
21	3887227		Wiring harness	L=3.0m, 10 ft., replaced by next part number
	21147169		Wiring harness	L=3.0m, 10 ft.
	3887228		Wiring harness	L=6.0m, 19.7 ft., replaced by next part number
	21147170		Wiring harness	L=6.0m, 19.7 ft.
	3887229		Wiring harness	L=8.0m, 26.2 ft., replaced by next part number
	21147171		Wiring harness	L=8.0m, 26.2 ft.
22	3887733		Wiring harness, y	