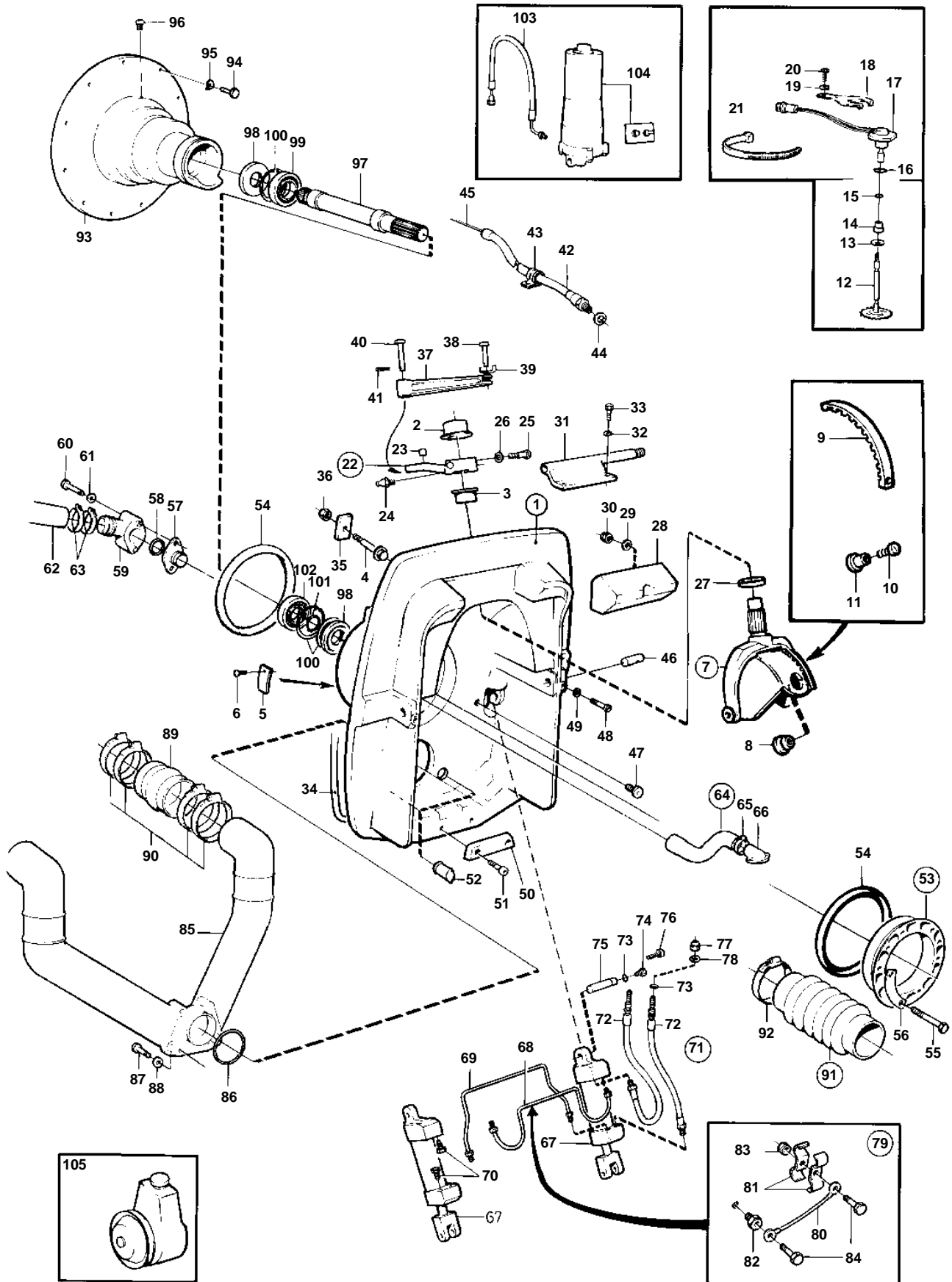


740A



10852

740A

| REF | PART NO. | QTY | DESCRIPTION | SEE SEC. | NOTES |
|-----|----------|-----|--------------------|----------|-----------------------|
| 1 | | 1 | Shield | | |
| 2 | 853864 | 1 | · Bushing | | |
| 3 | 853863 | 1 | · Bushing | | |
| 4 | 853595 | 6 | · Stud | | |
| 5 | 853706 | 1 | · Type plate | | |
| 6 | 804269 | 2 | · Drive screw | | |
| 7 | 854066 | 1 | Steering yoke | | |
| 8 | 853048 | 1 | · Bushing | | |
| 9 | 854063 | 1 | Gear segment | | |
| 10 | 853759 | 1 | Screw | | |
| 11 | 853760 | 1 | Rivet nut | | |
| 12 | 852984 | 1 | Driving wheel | | |
| 13 | 966207 | 1 | Sealing ring | | |
| 14 | 851430 | 1 | Bushing | | |
| 15 | 925050 | 1 | O-ring | | |
| 16 | 955991 | 1 | O-ring | | |
| 17 | 828726 | 1 | Sensor | | |
| 18 | 853039 | 1 | Bracket | | |
| 19 | 941907 | 1 | Spring washer | | |
| 20 | 940199 | 1 | Hexagon screw | | |
| 21 | 948210 | 1 | Cable tie | | |
| 22 | 853017 | 1 | Spindle arm | | |
| 23 | 949368 | 1 | · Bushing | | |
| 24 | 914169 | 1 | Lubricating nipple | | |
| 25 | 959241 | 1 | Hex. socket screw | | |
| 26 | 942336 | 1 | Spring washer | | |
| 27 | 839195 | 1 | Ring | | |
| | | | Bulletin 48-23 | 48-23-EN | Seal Ring |
| 28 | 854133 | 1 | Rubber cushion | | |
| 29 | 960148 | 2 | Washer | | |
| 30 | 971089 | 2 | Lock nut | | |
| 31 | 852775 | 1 | Cable attachment | | |
| 32 | 941908 | 2 | Spring washer | | |
| 33 | 970950 | 2 | Hexagon screw | | |
| 34 | 852868 | X | Sealing strip | | L = 1750 MM |
| 35 | 852866 | 6 | Washer | | |
| 36 | 963108 | 6 | Lock nut | | |
| 37 | 852786 | 1 | Link rod | | |
| 38 | 913158 | 1 | Clevis pin | | |
| 39 | 853160 | 1 | Lock washer | | |
| 40 | | 1 | Bolt | | |
| 41 | 907856 | 1 | Split pin | | |
| 42 | 839091 | 1 | Protecting hose | | |
| 43 | 952635 | 1 | Clamp | | |
| 44 | 897745 | 1 | Gasket | | |
| 45 | | X | CONTROL CABLE | | SEE GROUP 9 |
| 46 | 853175 | 2 | Pivot pin | | |
| 47 | 853215 | 2 | Plug | | |
| 48 | 963699 | 2 | Hex. socket screw | | |
| 49 | 941670 | 2 | Washer | | |
| 50 | 852835 | 1 | Zinc electrode | | |
| 51 | 946541 | 2 | Hex. socket screw | | |
| 52 | 872228 | 2 | Check valve | | |
| 53 | 854315 | 1 | Clamping ring kit | | |
| 54 | 804190 | 2 | · Rubber ring | | |
| 55 | 191844 | 6 | · Hexagon screw | | |
| 56 | 806624 | 3 | · Striker plate | | |
| 57 | 872234 | 1 | Pressure hose | | |
| 58 | 925064 | 1 | O-ring | | |
| 59 | 872338 | 1 | Hose connection | | |
| 60 | 955516 | 2 | Hexagon screw | | |
| 61 | 955893 | 2 | Washer | | |
| 62 | 857048 | 1 | Hose | | INTAKE-SEA WATER PUMP |

7745660 - 44 - 19994

10852

Upd: 2009-11-26

740A, 740A/MS5

VOLVO
PENTA

740A

| REF | PART NO. | QTY | DESCRIPTION | SEE SEC. | NOTES |
|-----|----------|-----|---|----------|--|
| 63 | 961669 | 2 | Hose clamp | | |
| 64 | 875847 | 1 | Hose kit | | |
| 65 | 853548 | 1 | · Hose clamp | | |
| 66 | | 1 | HOSE CONNECTION | | SEE GROUP 4C |
| 67 | 854610 | 2 | Hydraulic cylinder | | TRIMMING CYLINDER KIT 872612 CONSISTS OF 2EA 872598 + 854696 + 854697 + 872595 + 872596 + 2EA 852879 + 854627 + 872207 + 2EA 854628 + 944456 + 2EA 872382 + 2EA 963545 + 2EA 925053., REPL BY 872612 |
| | 872612 | 1 | Trimming cylind kit | | |
| | 872598 | 2 | Cylinder | | INCLUDED IN TRIMMING CYLINDER KIT 872612. |
| 68 | 852830 | 1 | Tube | | FRONT |
| | 854696 | 1 | Tube | | INCLUDED IN TRIMMING CYLINDER KIT 872612., FRONT |
| 69 | 852832 | 1 | Tube | | REAR |
| | 854697 | 1 | Tube | | INCLUDED IN TRIMMING CYLINDER KIT 872612., REAR |
| 70 | 852879 | 2 | Plug | | |
| 71 | 854752 | 1 | Set | | |
| 72 | 854710 | 1 | · Hydraulic hose | | FRONT |
| | 872595 | 1 | Hydraulic hose | | INCLUDED IN TRIMMING CYLINDER KIT 872612., FRONT |
| | 854711 | 1 | · Hydraulic hose | | REAR |
| | 872596 | 1 | Hydraulic hose | | INCLUDED IN TRIMMING CYLINDER KIT 872612., REAR |
| 73 | 925053 | 4 | · O-ring | | |
| 74 | 852879 | 2 | Plug | | |
| 75 | 852748 | 2 | Pin | | |
| 76 | 853060 | 2 | Flange screw | | |
| 77 | 853100 | 2 | Lock nut | | |
| 78 | 853059 | 2 | Washer | | |
| 79 | 854625 | 1 | Set | | |
| 80 | 854627 | 1 | · Ground cable | | |
| 81 | 854628 | 2 | · Clamp | | |
| 82 | 872207 | 1 | · Nipple | | |
| 83 | 944456 | 1 | · Hexagon nut | | |
| 84 | 963545 | 2 | · Hexagon screw | | |
| 85 | 872093 | 1 | Exhaust pipe | | |
| | | | Exhaust grommet | | SEE GROUP 9 |
| 86 | 925256 | 1 | O-ring | | |
| 87 | 970958 | 4 | Hexagon screw | | |
| 88 | 960148 | 4 | Washer | | |
| 89 | 872048 | 2 | Exhaust hose | | |
| 90 | 853012 | 8 | Hose clamp | | |
| 91 | 875848 | 1 | Bellows kit | | |
| 92 | 961675 | 2 | · Hose clamp | | |
| 93 | 841967 | 1 | Flywheel housing | | |
| 94 | 941939 | 6 | Screw | | |
| 95 | 942336 | 6 | Spring washer | | |
| 96 | 914167 | 1 | Lubricating nipple | | |
| 97 | 853809 | 1 | Spindle | | |
| 98 | 958860 | 2 | Sealing ring | | |
| 99 | 11013 | 1 | Ball bearing | | |
| 100 | 914533 | 3 | Snap ring | | |
| 101 | 914462 | 1 | Snap ring | | |
| 102 | 181105 | 1 | Ball bearing | | |
| 103 | 852839 | 2 | Hose | 19995 | |
| 104 | | 1 | HYDRAULIC PUMP AND TRIM INSTRUMENT WITH INSTALLATION COMPONENTS | 19995 | |
| 105 | | 1 | POWER STEERING | | SEE GROUP 6 |

7745660 - 44 - 19994

10852

Upd: 2009-11-26

740A, 740A/MS5

VOLVO
PENTA