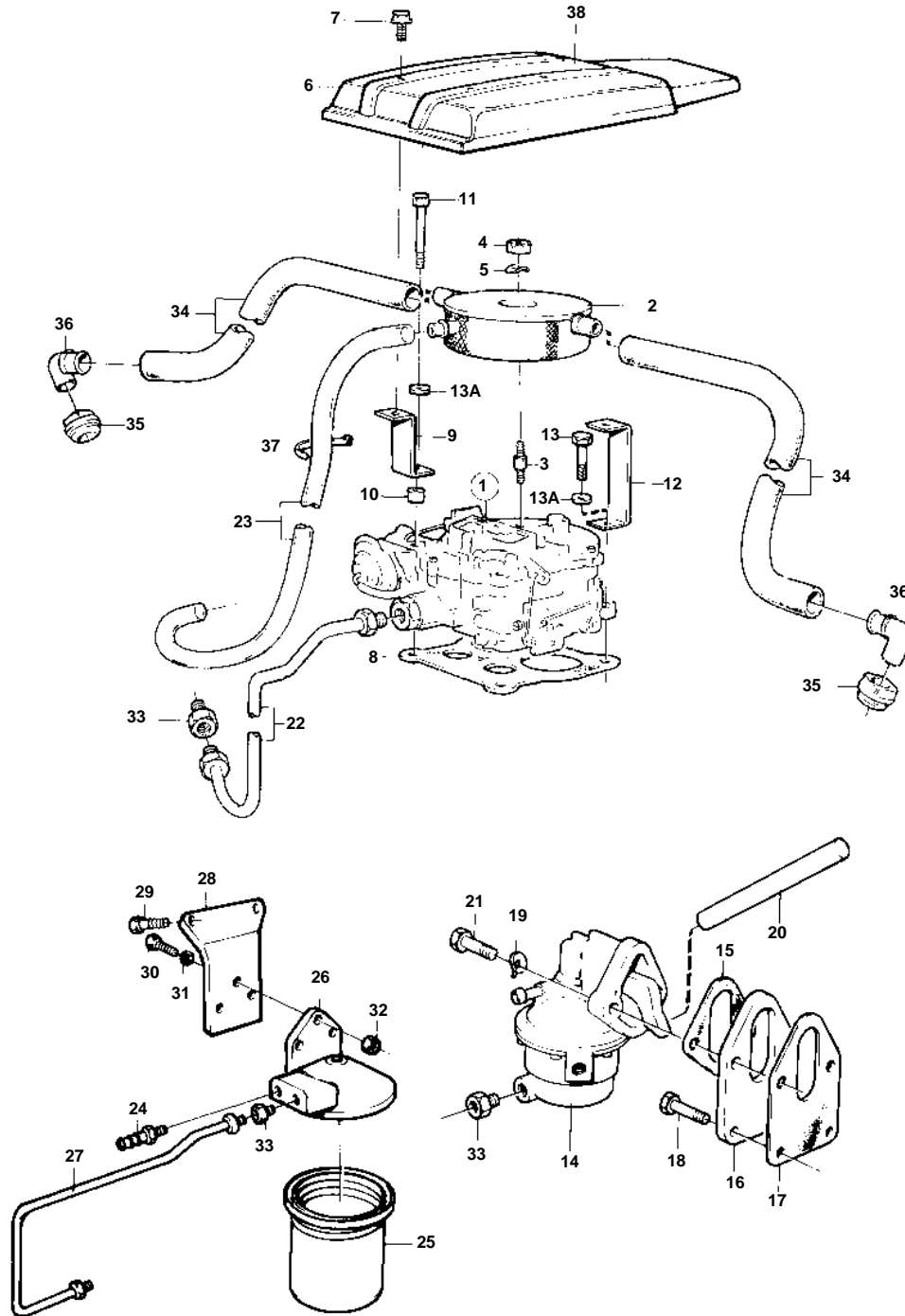


501A,501A/MS4



97S7

501A,501A/MS4

REF	PART NO.	QTY	DESCRIPTION	SEE SEC.	NOTES
1	841047	1	Carburetor		
				02C-0250	
2	855957	1	Flame trap		
3	834795	1	Stud		
4	950352	1	Lock nut		
5	941906	1	Spring washer		
6	855746	1	Cover		
7	965175	4	Screw		
8	856033	1	Gasket	IK	
9	856403	1	Bracket		
10	807184	2	Spacer sleeve		
11	949886	2	Screw		
12	856404	1	Bracket		
13	940159	2	Screw		
13A	941907	4	Spring washer		
14	826493	1	Fuel pump		
			COMPS NOT SPEC.		
15	856031	1	Gasket	IK	
16	835333	1	Flange		
17	856030	1	Gasket	IK	
18	841426	2	Screw		(943629)
19	942336	2	Spring washer		
20	835422	1	Push rod		
21	940162	2	Screw		
22	841356	1	Tube		
23	941149	X	Plastic hose		L = 700 MM
24	834781	1	Nipple		
25	855686	1	Fuel filter		
26	855569	1	Cover		
27	855668	1	Tube		
28	855570	1	Bracket		
29	841426	2	Screw		(943629)
30	955295	3	Screw		
31	941907	3	Spring washer		
32	955782	3	Nut		
33	180303	3	Nipple		
34	941522	X	Hose		L = 2X240 MM
35	835415	2	Sleeve		SEE GROUP 2A
36	855902	2	Hose connection		SEE GROUP 2A
37	948210	X	Strip clamp		
38	856691	1	Decal		501A,501/MS4