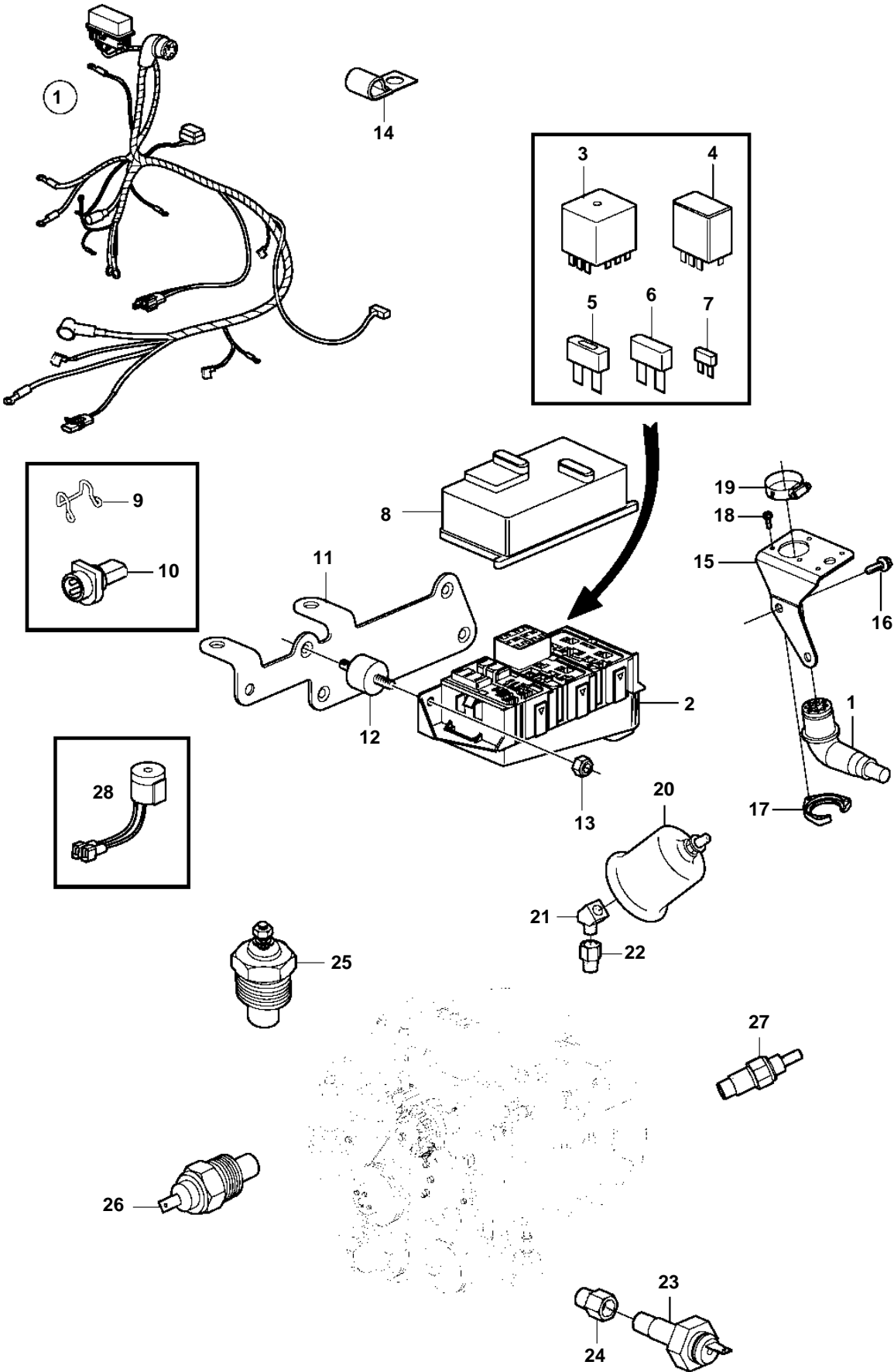


5.0GL-F, 5.0GL-FF



5.0GL-F, 5.0GL-FF

REF	PART NO.	QTY	DESCRIPTION	NOTES
1	3818279	1	Wiring harness	
2		1	• Fuse box	NOT SERVICED
3	3858809	3	• Relay	
4	3841366	2	• Relay	
5	3841369	1	• Fuse	50A
6	3841370	1	• Fuse	20A
	3841371	1	• Fuse	40A
7	3841373	X	• Fuse	5A
	3863403	X	• Fuse	7.5A
	3841372	X	• Fuse	10A
	3861373	X	• Fuse	15A
	3861374	X	• Fuse	20A
8		1	• Lid	
9	3852237	1	• Retainer	
10	3855178	1	• Connector	
11	3819215	1	Bracket	
12	3840402	2	Isolator	
13	3852118	2	Nut	
14	3852434	5	Clamp, J	D=.750" (19.0mm)
	3852146	2	Clamp, J	D=.375" (9.5mm)
15	3862583	1	Bracket	
16	3853557	2	Screw	
17	3852825	1	Retainer	
18	3852208	3	Screw	
19	3863440	1	Clamp	
20	3857532	1	Sender, oil pressure	
	872064	X	Sender, oil pressure	DUAL STATION
21	3852503	1	Elbow	
22	3855776	1	Adapter	
23	3852215	1	Switch, oil pressure	
24	3850660	1	Fitting	
25	3852029	1	Sender, coolant water temp.	
	872068	X	Sender, coolant water temp.	DUAL STATION
26	872066	1	Switch, coolant water temp.	
27	3862500	2	Temperature sensor	EXHAUST
28	3817974	1	Alarm	Mounted at the helm.