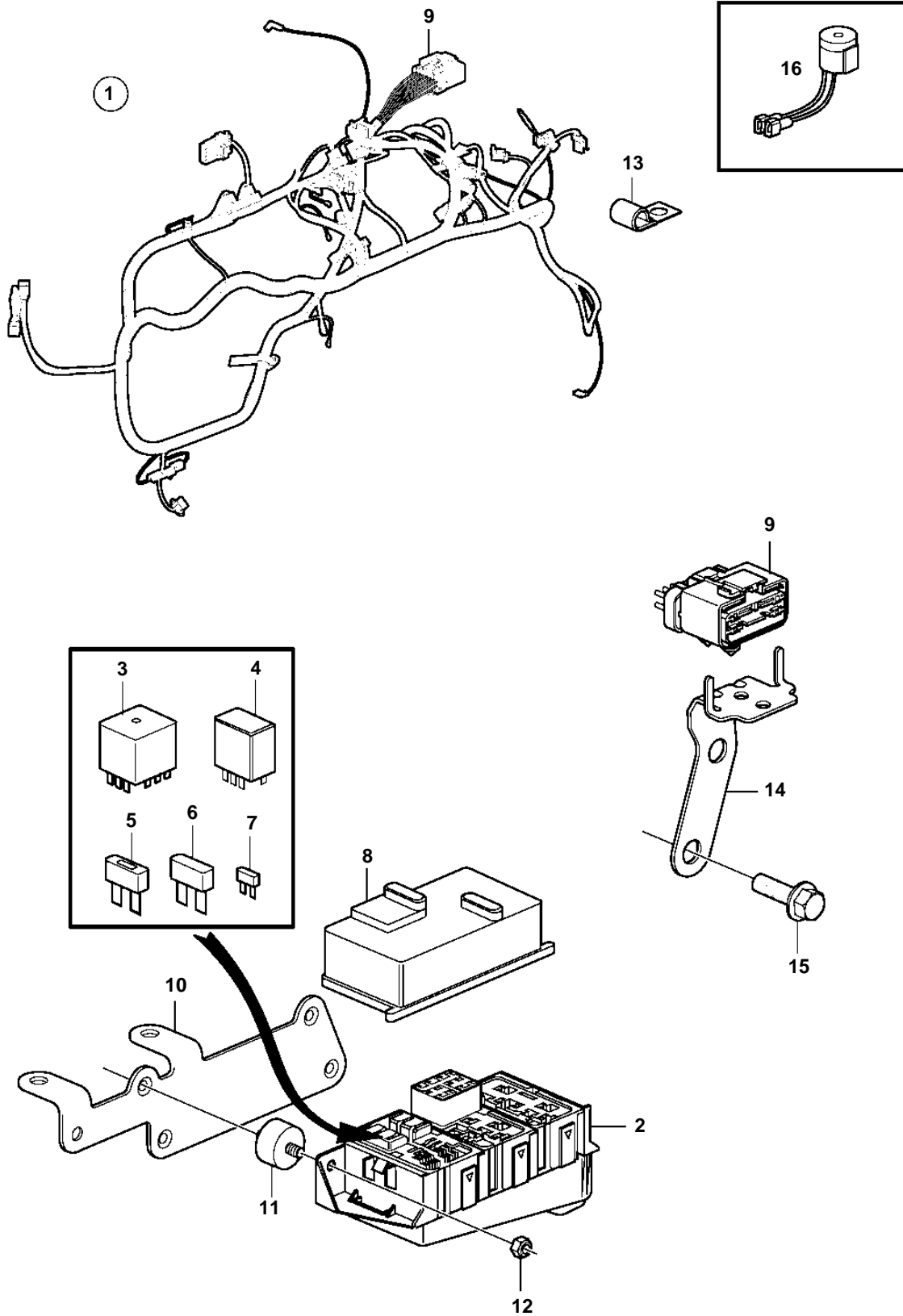


5.7OSi-300-J, 5.7OSi-300-JF, 5.7OSXi-J, 5.7OSXi-JF



23332

5.7OSi-300-J, 5.7OSi-300-JF, 5.7OSXi-J, 5.7OSXi-JF

REF	PART NO.	QTY	DESCRIPTION	NOTES
1	3848906	1	Wiring harness	
2		1	· Fuse box	not sold separately
3	3858809	3	· Relay	
4	3841366	2	· Relay	
5	3841369	1	· Fuse	50A
6	3841370	1	· Fuse	20A
	3841371	1	· Fuse	40A
7	3841373	1	· Fuse	5A
	3863403	1	· Fuse	7.5A
	3841372	1	· Fuse	10A
	3861373	1	· Fuse	15A
	3861374	1	· Fuse	20A
8		1	· Cover plate	not sold separately
9		1	· Connector, 14 pin	not sold separately
10	3843887	1	Bracket	
11	3840402	2	Mounting base	
12	3852118	2	Nut	
13		2	Clamp, J	D=.375" (9.5mm)
	3852434	3	Clamp, J	D=.750" (19.0mm)
14	3884234	1	Bracket	
15		2	Screw	
16	3883706	1	Alarm	Mounted at the helm.