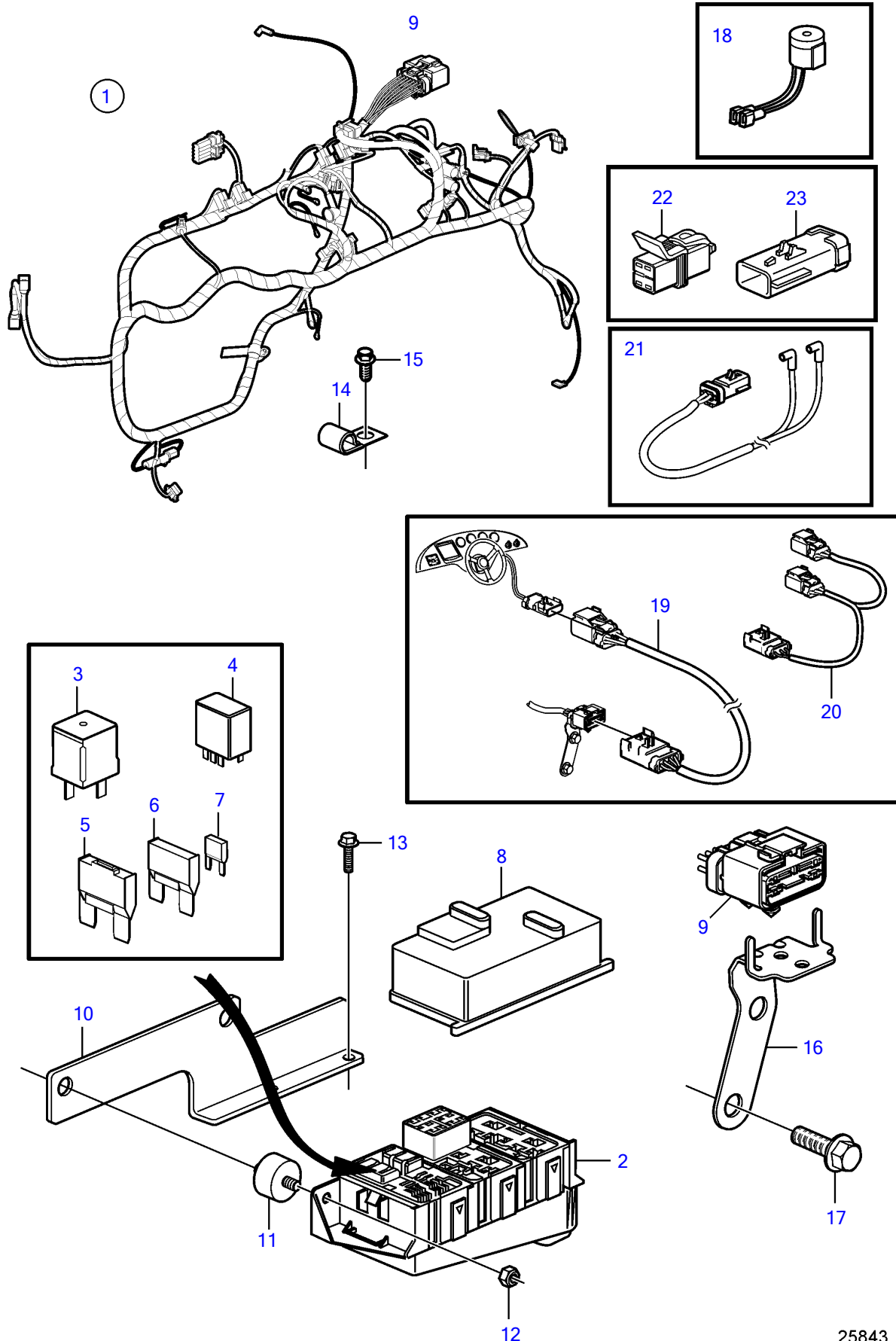


5.0GXIE-P



5.0GXIE-P

REF	PART NO.	QTY	DESCRIPTION	NOTES
1	21512120	1	Wiring harness	
2		1	• Fuse box	not sold separately
3	3858809	3	• Relay	
4	3841366	2	• Relay	
5	3884849	1	• Fuse	40A
6	3841370	1	• Fuse	20A
	3841371	1	• Fuse	40A
7	3841373	1	• Fuse	5A
	3863403	1	• Fuse	7.5A
	3841372	1	• Fuse	10A
	3861373	1	• Fuse	15A
	3861374	1	• Fuse	20A
8		1	• Cover plate	not sold separately
9		1	• Connector, 14 pin	not sold separately
10		1	Bracket	
11	3840402	2	Mounting base	
12	3852118	2	Nut	
13	946544	2	Flange screw	
14	(3852146)	2	Clamp, J	Obsolete part, D=.375" (9.5mm)
	3852434	2	Clamp, J	D=.750" (19.0mm)
	3852490	1	Attaching clamp	
15	(3853557)	2	Flange screw	Obsolete part, 3/8" - 16 unc, L=0.75" (19mm)
16	3884234	1	Bracket	
17	(3853557)	2	Flange screw	Obsolete part, 3/8" - 16 unc, L=0.75" (19mm)
18	3883708	1	Alarm kit	
19	21147169	1	Wiring harness	L=3.0m, 10 ft.
	21147170	1	Wiring harness	L=6.0m, 19.7 ft.
	21147171	1	Wiring harness	L=8.0m, 26.2 ft.
20	3887733	1	Wiring harness, y	
21	21544456	1	Wiring harness	exhaust over-heat sensors
22	21544465	7	Cardboard tube	for sensor leads not used on this specification
23	21544466		Cardboard tube	for sensor leads not used on this specification