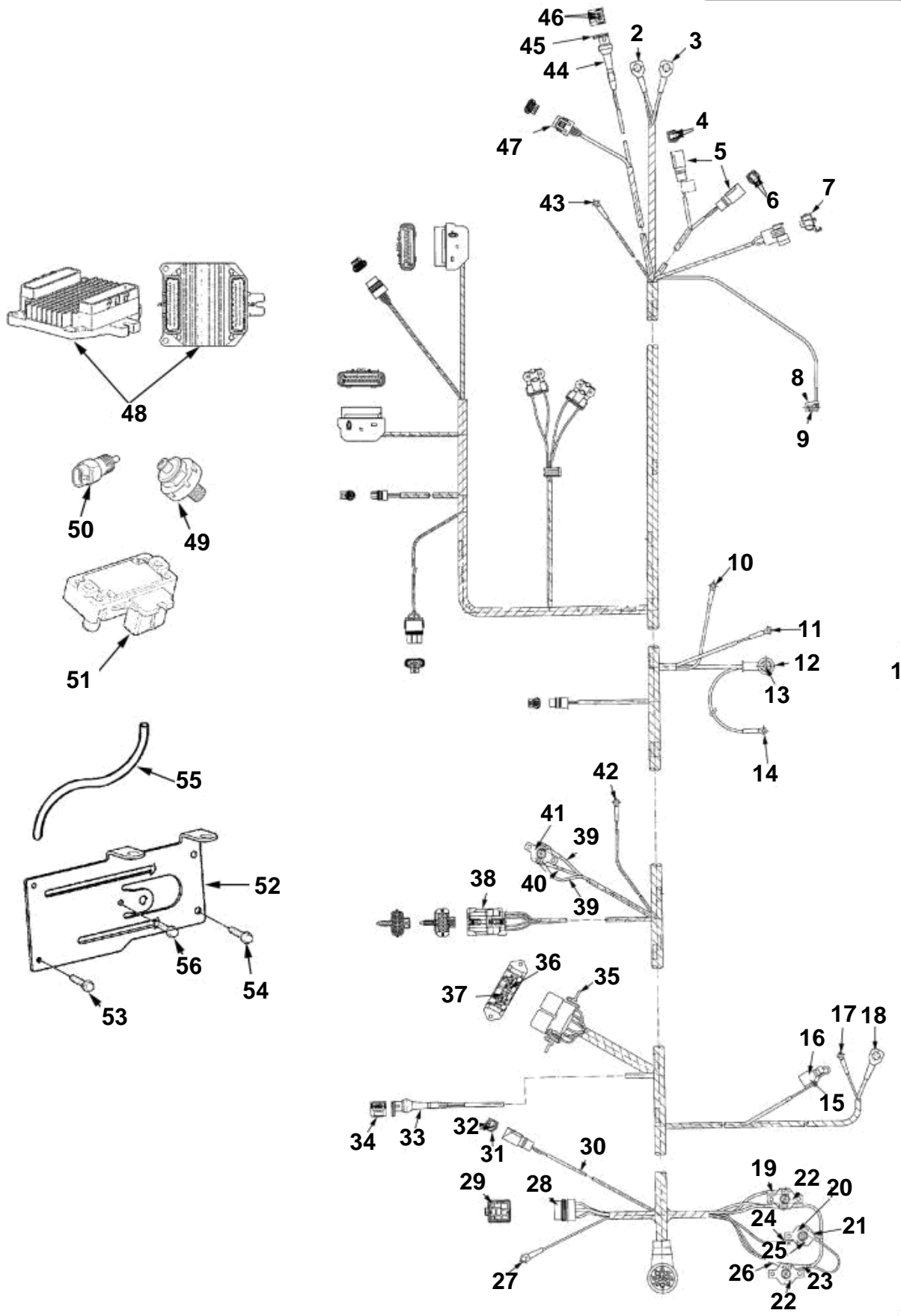


5.0GIPWTR, 5.7GSPWTR



5.0GIPWTR, 5.7GSIPWTR

REF	PART NO.	QTY	DESCRIPTION	SEE SEC.	NOTES
1	3858281	1	Wiring harness		
2	3852527	1	Terminal, Alternator ground		Black
3	3852527	1	Terminal, Trim sender fuel pump ground		Black
4	3852229	2	Terminal		
5	3853565	2	Connector, 2 pin		
6	3852229	2	Terminal, Trim sender		
7	3854244	1	Cable, Ignition coil		
8	3853320	1	Cardboard tube, Oil pressure switch		
9	3852084	1	Terminal, Oil pressure switch		Tan/black
10	3852245	1	Terminal, Alternator ground		Black
11		1	Terminal, Alternator excite		Purple
12	3852130	1	Rubber cap, Alternator output		
13	3852038	1	Terminal, Alternator output		Orange
14	3852233	1	Terminal, Alternator output		
15	3857189	1	Cable seal, Knock sensor		
16	3853480	1	Terminal casing, Knock sensor		
17		1	Terminal, Starter solenoid-starter terminal		Yellow/red
18	3852527	1	Terminal, Starter solenoid		
19	3852245	1	Terminal		
20	3852245	1	Terminal		
21		1	Terminal		
22	3854164	2	Automatic fuse, 50 amp		
23	3852245	1	Terminal		
24		1	Terminal		
25	3854163	1	Automatic fuse, 20 amp		
26	3852245	1	Terminal		
27	3852227	1	Terminal, Electrical bracket ground		Black
28	3854192	1	Relay, Starter relay		
29	3854192	4	Relay, Starter relay		
30		1	Cable tie, Shift interrupt to cable trunk		
31	3853565	1	Connector, 2 pin shift interrupt		
32	3852229	2	Terminal, Shift interrupt		
33	3853681	1	Trunk, Low pressure fuel pump		
34	3853679	2	Terminal, Low pressure fuel pump		
35	3852210	1	Bracket, Fuel pump ignition relay		
36	3852246	4	Terminal, Fuel pump ignition relay		
37	3852247	4	Terminal, Fuel pump ignition relay		
38		1	Terminal		Part not sold
39		2	Terminal, Fuel pump circuit breaker		
40	3852233	1	Terminal, Fuel pump circuit breaker		
41	3854163	1	Automatic fuse, 20 amp		
42	3852233	1	Terminal, Water temp transmitter		
43	3852233	1	Terminal, Oil pressure transmitter		
44	3853681	1	Trunk, High pressure fuel pump		
45	3855021	1	Connector housing, High pressure fuel pump		
46	3853679	2	Terminal, High pressure fuel pump		
47	3855245	1	Connector		
48	3858863	1	Engine control modul		Gi
			· Bulletin P-28-4-9	P-28-4-9-EN	ECM Replacement
48	3858888	1	Engine control modul		GSi
			· Bulletin P-28-4-9	P-28-4-9-EN	ECM Replacement
49	3850357	1	Knock sensor		
50	3850397	1	Switch		
51	3850396	1	Sensor		
52	3857815	1	Bracket, ECM and MAP sensor		
53	3852115	2	Screw, MAP sensor bracket		
54	3852053	3	Screw, ECM to bracket		
55	3857179	4	Hose, MAP sensor		
56	3853398	1	Screw, ECU bracket to riser		