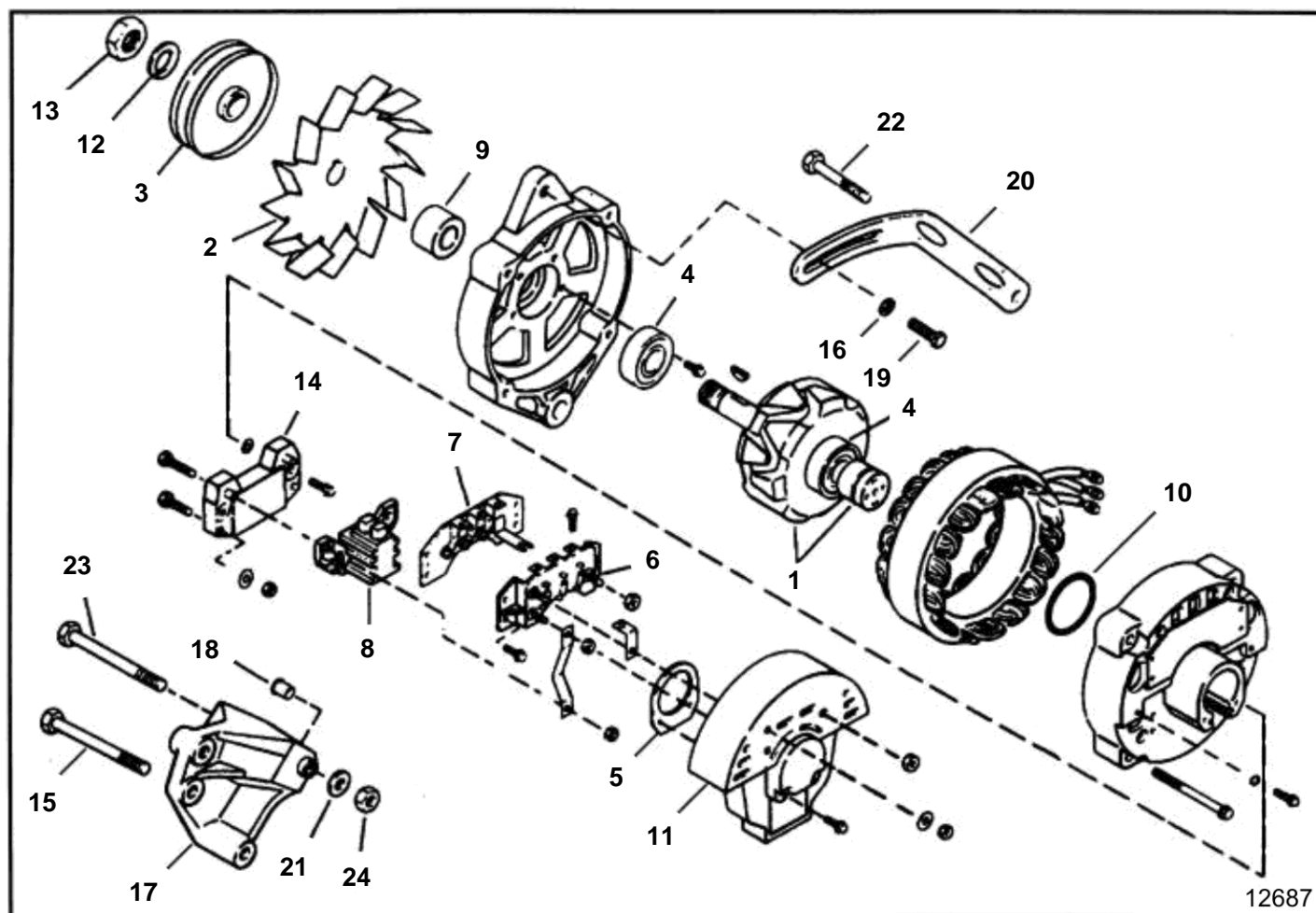


5.0FIPNCACE, 5.0FIPNCBCE, 5.0FIPNCMCE, 5.0FIPNCSCE



REF	PART NO.	QTY	DESCRIPTION	NOTES
1	3854809	1	Alternator	Un-numbered parts serviced at assembly level only
		1	• Rotor	
2	3853756	1	• Fan	
3	3853755	1	• Pulley	
4	3852643	2	• Bearing, Front & rear	
5	3852642	1	• Bearing carrier, Rear bearing	
6		1	• Diode	
7		1	• Diode bridge	
8	3853835	1	• Brush retainer	
9	3852639	1	• Spacer, Fan	
10	3852637	1	• Gasket	
11	3853834	1	• Cover	
12	3852625	1	• Lock washer, Pulley	
13	3852630	1	• Nut, Pulley	
14	3853833	1	• Governor, Voltage	
15	3853395	2	Screw, Alternator bracket to engine	
16	3852054	1	Washer, Brace to alternator	
17	3854183	1	Bracket, Alternator to water pump	
18	3852740	1	• Bushing, Alternator	
19	3853399	1	Screw, Brace to alternator	
20	3852703	1	Brace, Alternator	
21	3852058	1	Washer, Alternator to bracket	Rear
22	3853557	1	Screw, Alternator brace to water pump	
23	3853367	1	Screw, Alternator to bracket	Power steering
24	3852051	1	Nut, Alternator to bracket	