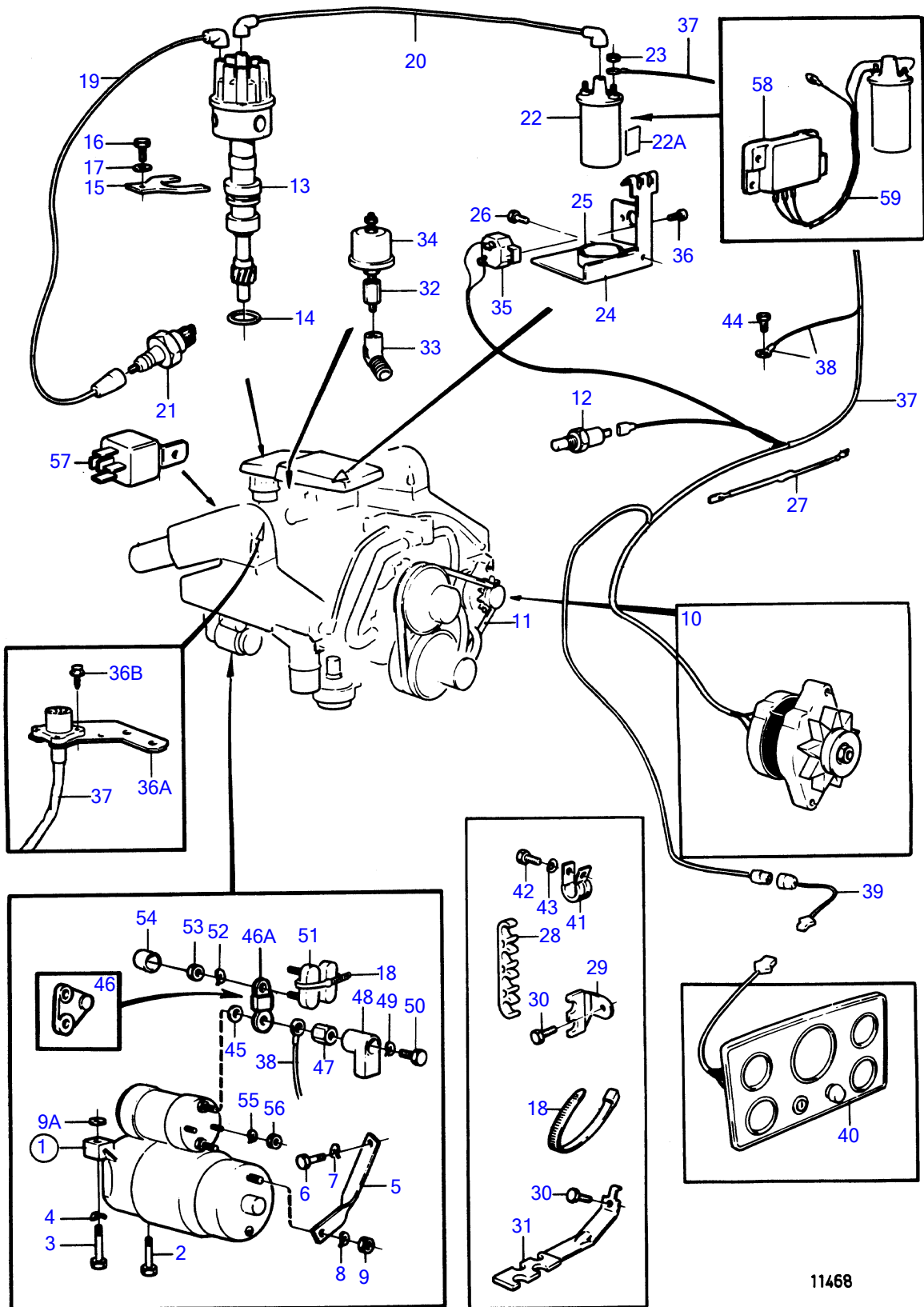


570A



11468

570A

REF	PART NO.	QTY	DESCRIPTION	SEE SEC.	NOTES
1	855326	1	Starter motor		Also available as an exchange part., Early type
			•	12551	
	872394	1	Starter motor		Also available as an exchange part.
			•	12551	
2	835424	1	Screw		Early type
3	835425	1	Screw		Early type
	835425	2	Screw		
4	942336	2	Spring washer		
5	855315	1	Anchorage		Early type
6	940113	1	Hexagon screw		Early type
7	941907	1	Spring washer		Early type
8	941906	1	Spring washer		Early type
9	955825	1	Hexagon nut		Early type
9A	841194	X	Adjusting washer		
10		1	alternator and installation components	12543	
11	966857	1	V-belt		See group 2B
12	835630	1	Temperature sensor		Early type
	872067	1	Temperature sensor		
13	(855932)	1	Distributor, distributor		Obsolete part
			•	12548	
			•	12548	
14	835154	1	Gasket		
15	841530	1	Retainer		
16	940114	1	Hexagon screw		
17	940097	1	Washer		
18	948210	X	Cable tie		
19	856771	X	Ignition cable		All ignition cables partno 856771 which are 1000mm and should be cut off in suitable lengths., L=1000mm
20	856771	X	Ignition cable		All ignition cables partno 856771 which are 1000mm and should be cut off in suitable lengths., L=1000mm
21	876047	2	Spark plug kit		
22	(857409)	1	Ignition coil		Obsolete part, (855706)
22A	857504	1	Spacer		For 857409
23	(834772)	2	Nut		Obsolete part
24		1	bracket		See group 2D
25	1219561	1	Clamp		
26	(834371)	1	Screw		Obsolete part
27	834784	1	Resistor		Early type
28	(835429)	2	Retainer		Obsolete part
29	(835428)	2	Retainer		Obsolete part
30		2			
31	835427	2	Retainer		
32	835980	1	Nipple		
33	809109	1	Elbow nipple		
34	834920	1	Oil pressure sensor		Early type
	872063	1	Pressure sensor		
35	841178	1	Automatic fuse		40A
36	950013	2	Cross recessed screw		
36A	856762	1	Bracket		
36B	(965364)	4	Hexagon screw		Obsolete part
37	(856727)	1	Wiring harness		Obsolete part
38		X	• cable and cable terminals	12557	
39	(856881)	X	Extension cable'verl		Obsolete part, L=3000mm
	856882	X	Extension cable'verl		L=6000mm
40	(856672)	1	Instrument panel		Obsolete part, USA, early type
			•	12553	
	(856673)	1	Instrument panel		Obsolete part, Eur, early type
			•	12554	
	856820	1	Instrument panel		Late type
			•	12555	

7736260-30-12535

11468

Upd:2014-10-28

570A

REF	PART NO.	QTY	DESCRIPTION	SEE SEC.	NOTES
41	942810	1	Clamp		
42	955534	1	Hexagon screw		
43	942336	1	Spring washer		
44	943629	1	Flange screw		
45	1585449	1	Gasket		Early type
46	852986	1	Current bar		Repl by 860212
46A	860212	1	Current bar		Early type
47	855330	1	Spacer nut		
48	855798	1	Protecting sleeve		
49	940109	1	Toothed washer		
50	970943	1	Hexagon screw		(955314)
51	856355	2	Fuse		55A earlier prod
52	941906	1	Spring washer		Early type
53	955781	2	Hexagon nut		Early type
54	853572	1	Protective cap		Early type
55	941905	2	Spring washer		
56	955780	2	Hexagon nut		
57	841177	1	Relay		Early type
	872272	1	Relay		
58	(855870)	1	Race gard		Obsolete part
59	(841043)	1	Cable kit		Obsolete part
		X	• cables and cable terminals	12557	

7736260-30-12535

11468

Upd:2014-10-28