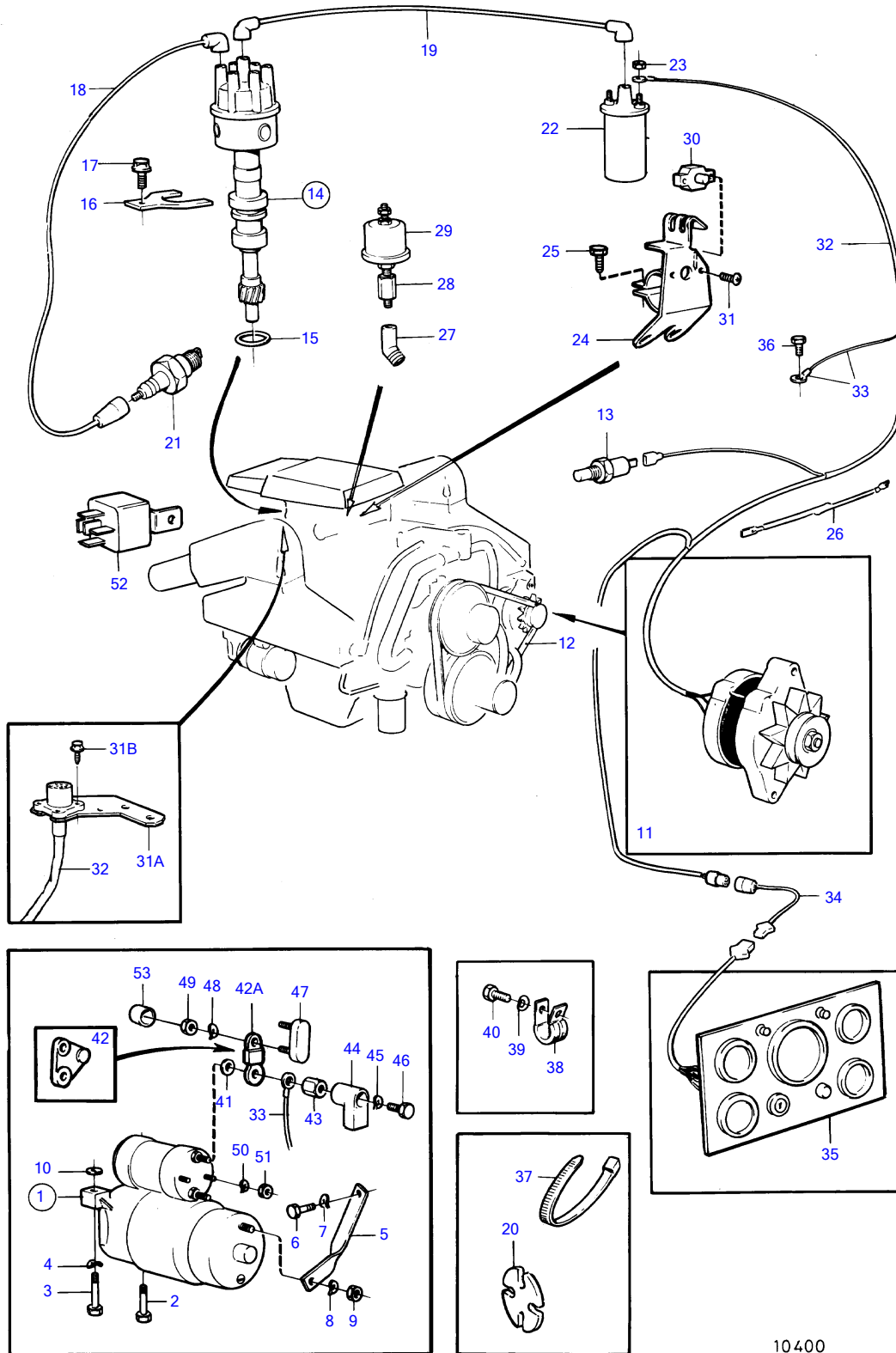


431A



10400

431A

REF	PART NO.	QTY	DESCRIPTION	SEE SEC.	NOTES
1	855326	1	Starter motor		Also available as an exchange part.
			.	12551	
2	835424	1	Screw		
3	835425	1	Screw		
4	942336	2	Spring washer		
5	855315	1	Anchorage		
6	940113	1	Hexagon screw		
7	941907	1	Spring washer		
8	941906	1	Spring washer		
9	955825	1	Hexagon nut		
10	841194	X	Adjusting washer		
11		1	alternator and installation components	12539	
12	966857	1	V-belt		See group 2B
13	835630	1	Temperature sensor		See group 2B
	835649	1	Sensor		For fly bridge., See group 9
14	856143	1	Distributor		
			.	12546	
15	835154	1	Gasket		
16	841530	1	Retainer		
17	855824	1	Screw		
18	856771	X	Ignition cable		All ignition cables partno 856771 which are 1000mm and should be cut off in suitable lengths., L=1000mm
19	856771	X	Ignition cable		All ignition cables partno 856771 which are 1000mm and should be cut off in suitable lengths., L=1000mm
20	(1219071)	4	Retainer		Obsolete part
21	876046	1	Spark plug kit		Included in base engine., See group 10A
22	855706	1	Ignition coil		
23	(834772)	2	Nut		Obsolete part
24		1	bracket		See group 2D
25	(834371)	1	Screw		Obsolete part
26	834784	1	Resistor		
27	809109	1	Elbow nipple		
28	835980	1	Nipple		
29	834920	1	Oil pressure sensor		
	834921	1	Oil pressure sensor		For fly bridge.
30	841178	1	Automatic fuse		40A
31	950013	2	Cross recessed screw		
31A	856762	1	Bracket		
31B	(965364)	4	Hexagon screw		Obsolete part
32	(856727)	1	Wiring harness		Obsolete part
33		X	. cable and terminals	12557	
34	(856881)	X	Extension cable'verl		Obsolete part, L=3000mm
	856882	X	Extension cable'verl		L=6000mm
35	(856672)	1	Instrument panel		Obsolete part, USA, early type
			.	12553	
	(856673)	1	Instrument panel		Obsolete part, Eur, early type
			.	12554	
	(856671)	1	Instrument panel		Obsolete part, Without fuel gauge., USA, early type
			.	12554	
	856820	1	Instrument panel		Late type
			.	12555	
36	943629	1	Flange screw		(841426)
37	948210	X	Cable tie	12557	
38	942810	1	Clamp		
39	942336	1	Spring washer		
40	955534	1	Hexagon screw		
41	1585449	1	Gasket		
42	852986	1	Current bar		Repl by 860212
42A	860212	1	Current bar		
43	855330	1	Spacer nut		
44	855798	1	Protecting sleeve		

7736260-30-12552

10400

Upd:2014-10-28

431A

REF	PART NO.	QTY	DESCRIPTION	SEE SEC.	NOTES
45	940109	1	Toothed washer		
46	970943	1	Hexagon screw		(955314)
47	856355	2	Fuse		55A (853502)
48	941906	2	Spring washer		
49	955781	2	Hexagon nut		
50	941905	2	Spring washer		
51	955780	2	Hexagon nut		
52	841177	1	Relay		
53	853572	1	Protective cap		