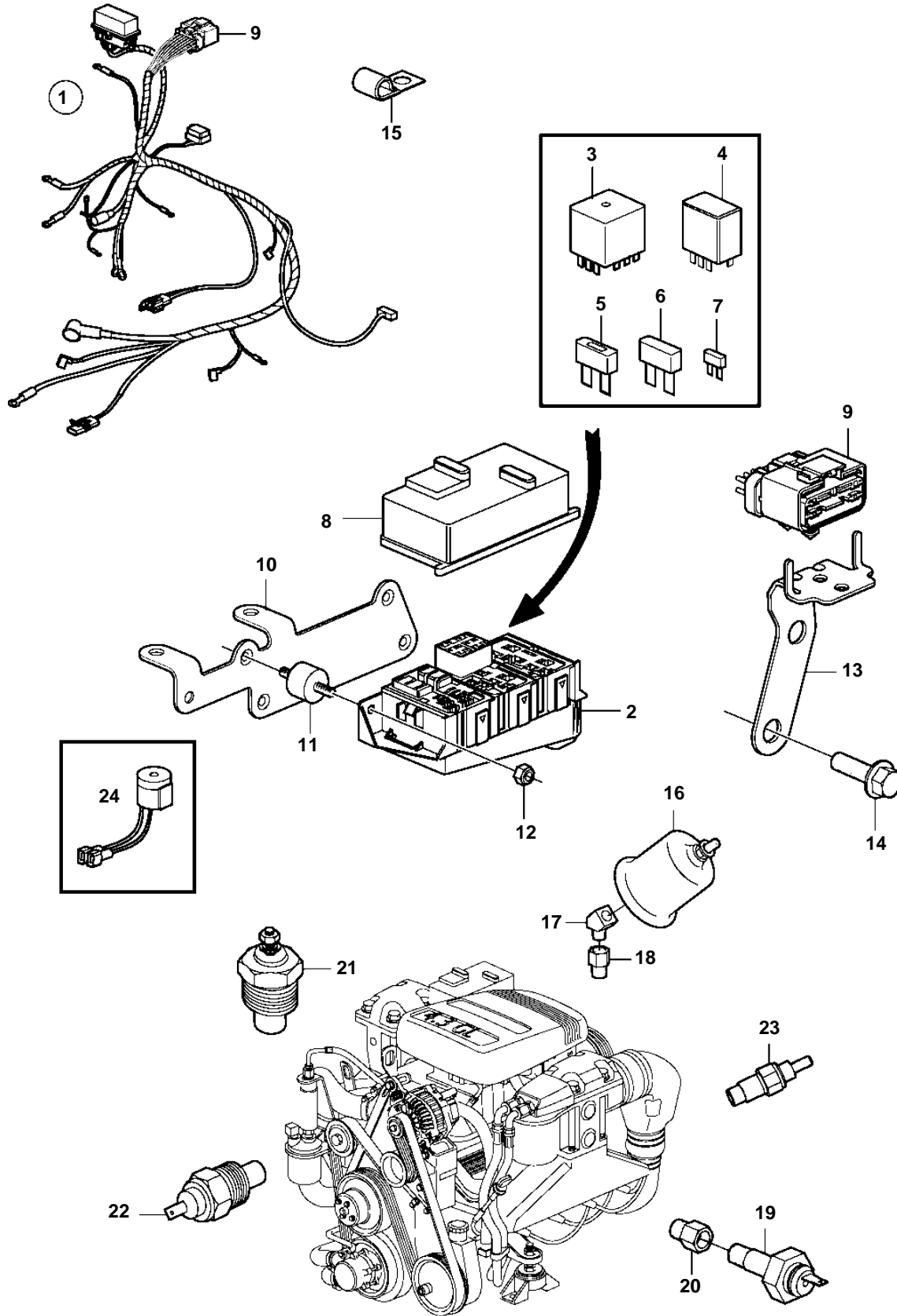


4.3GL-J, 4.3GL-JF



23371

4.3GL-J, 4.3GL-JF

REF	PART NO.	QTY	DESCRIPTION	NOTES
1	3884239	1	Wiring harness	
2		1	• Fuse box	not sold separately
3	3858809	3	• Relay	
4	3841366	2	• Relay	
5	3841369	1	• Fuse	50A
6	3841370	1	• Fuse	20A
	3841371	1	• Fuse	40A
7	3841373	X	• Fuse	5A
	3863403	X	• Fuse	7.5A
	3841372	X	• Fuse	10A
	3861373	X	• Fuse	15A
	3861374	X	• Fuse	20A
8		1	• Cover plate	not sold separately
9		1	• Connector, 14 pin	not sold separately
10	3843887	1	Bracket	
11	3840402	2	Mounting base	
12	3852118	2	Nut	
13	3884234	1	Bracket	
14	3853557	2	Screw	
15	3852434	5	Clamp, J	D=.750" (19.0mm)
	3852146	2	Clamp, J	D=.375" (9.5mm)
16	3857532	1	Oil pressure sensor, oil pressure	
	872064	X	Pressure sensor, oil pressure	Dual station
17	3852503	1	Elbow	
18	3855776	1	Adapter	
19	3852215	1	Pressure monitor, oil pressure	
20	3850660	1	Fitting	
21	3852029	1	Sensor, coolant water temp.	
	872068	X	Temperature sensor, coolant water temp.	Dual station
22	872066	1	Thermo monitor, coolant water temp.	
23	3862500	2	Temperature sensor	Exhaust
24	3817974	1	Alarm	Mounted at the helm.