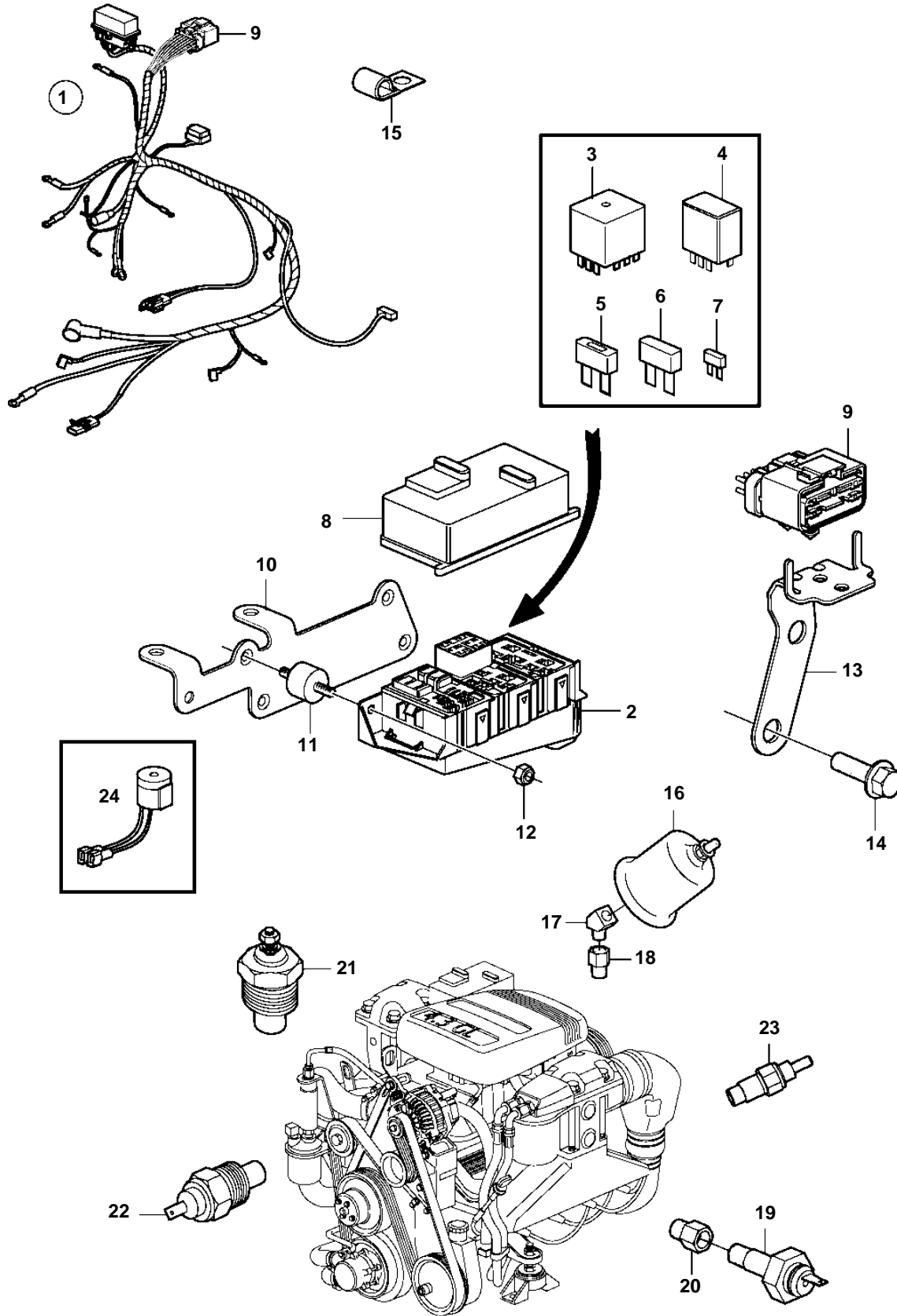


4.3GL-G, 4.3GL-GF



23371

4.3GL-G, 4.3GL-GF

| REF | PART NO. | QTY | DESCRIPTION                             | NOTES                |
|-----|----------|-----|---|----------------------|
| 1   | 3884239  | 1   | Wiring harness                          |                      |
| 2   |          | 1   | · Fuse box                              | not sold separately  |
| 3   | 3858809  | 3   | · Relay                                 |                      |
| 4   | 3841366  | 2   | · Relay                                 |                      |
| 5   | 3841369  | 1   | · Fuse                                  | 50A                  |
| 6   | 3841370  | 1   | · Fuse                                  | 20A                  |
|     | 3841371  | 1   | · Fuse                                  | 40A                  |
| 7   | 3841373  | X   | · Fuse                                  | 5A                   |
|     | 3863403  | X   | · Fuse                                  | 7.5A                 |
|     | 3841372  | X   | · Fuse                                  | 10A                  |
|     | 3861373  | X   | · Fuse                                  | 15A                  |
|     | 3861374  | X   | · Fuse                                  | 20A                  |
| 8   |          | 1   | · Cover plate                           | not sold separately  |
| 9   |          | 1   | · Connector, 14 pin                     | not sold separately  |
| 10  | 3843887  | 1   | Bracket                                 |                      |
| 11  | 3840402  | 2   | Mounting base                           |                      |
| 12  | 3852118  | 2   | Nut                                     |                      |
| 13  | 3884234  | 1   | Bracket                                 |                      |
| 14  | 3853557  | 2   | Screw                                   |                      |
| 15  | 3852434  | 5   | Clamp, J                                | D=.750" (19.0mm)     |
|     | 3852146  | 2   | Clamp, J                                | D=.375" (9.5mm)      |
| 16  | 3857532  | 1   | Oil pressure sensor, oil pressure       |                      |
|     | 872064   | X   | Pressure sensor, oil pressure           | Dual station         |
| 17  | 3852503  | 1   | Elbow                                   |                      |
| 18  | 3855776  | 1   | Adapter                                 |                      |
| 19  | 3852215  | 1   | Pressure monitor, oil pressure          |                      |
| 20  | 3850660  | 1   | Fitting                                 |                      |
| 21  | 3852029  | 1   | Sensor, coolant water temp.             |                      |
|     | 872068   | X   | Temperature sensor, coolant water temp. | Dual station         |
| 22  | 872066   | 1   | Thermo monitor, coolant water temp.     |                      |
| 23  | 3862500  | 2   | Temperature sensor                      | Exhaust              |
| 24  | 3817974  | 1   | Alarm                                   | Mounted at the helm. |