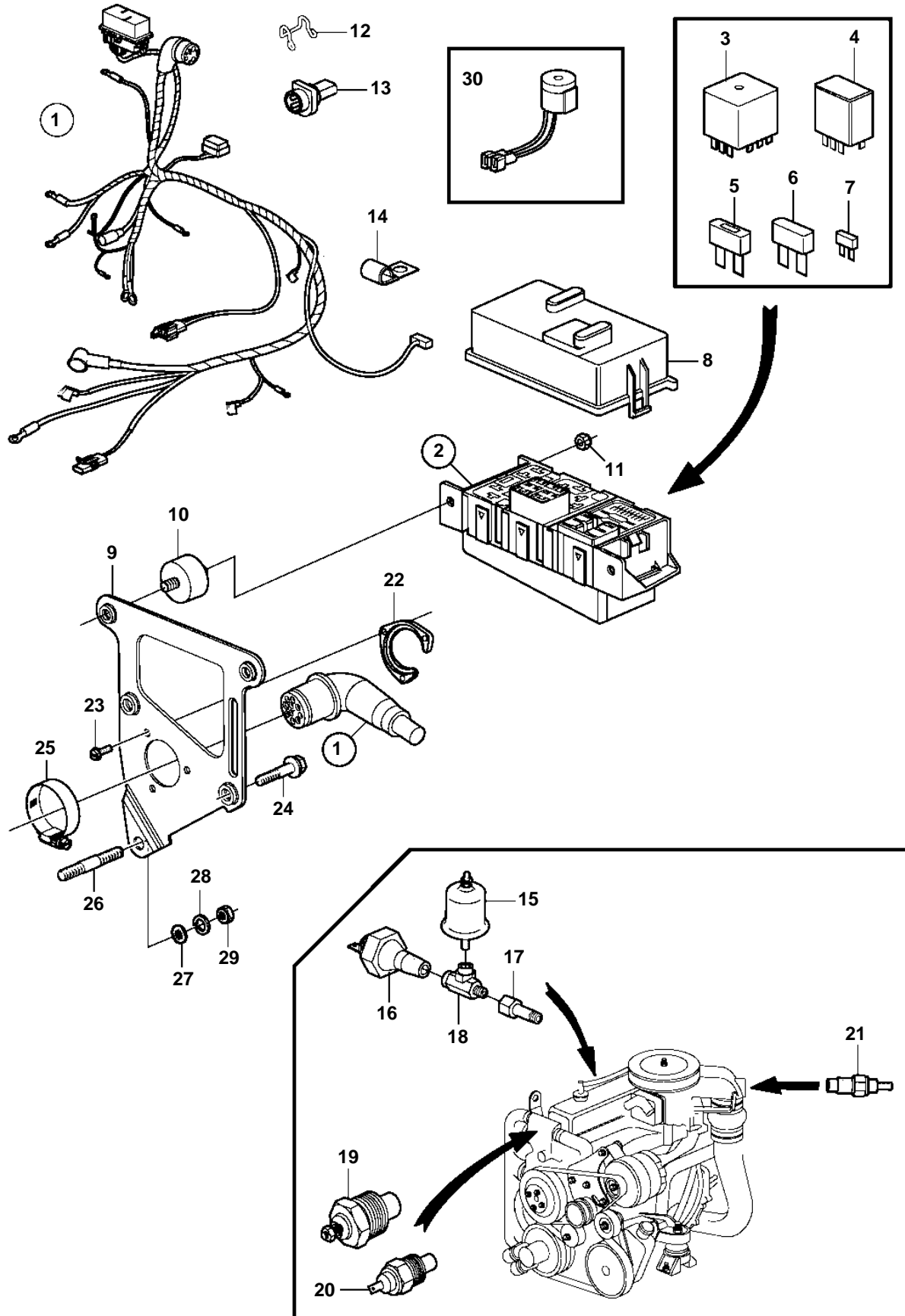


3.0GLP-D



21510

3.0GLP-D

REF	PART NO.	QTY	DESCRIPTION	NOTES
1	3818274	1	Wiring harness	
2		1	• Fuse box	
3	3858809	3	• • Relay	
4	3841366	2	• • Relay	
5	3841369	1	• • Fuse	50A
6	3841370	1	• • Fuse	20A
	3841371	1	• • Fuse	40A
7	3841373	X	• • Fuse	5A
	3863403	X	• • Fuse	7.5A
	3841372	X	• • Fuse	10A
	3861373	X	• • Fuse	15A
	3861374	X	• • Fuse	20A
8		1	• Lid	
9	3842860	1	Bracket	
10	3840402	2	Isolator	
11	3852118	2	Nut	
12	3852237	1	Retainer	
13	3855178	1	Connector	
14	3852199	1	Clamp	
	3852146	1	Clamp	EXHAUST SENSOR LEAD
	3852434	1	Clamp	ALTERNATOR LEAD
15	3857532	1	Sender, oil pressure	
	872064	X	Sender, oil pressure	DUAL STATION
16	3852215	1	Switch, oil pressure	
17	3855776	1	Adapter	
18	3852610	1	T-nipple	
19	3852029	1	Sender, coolant water temp.	
	872068	X	Sender, coolant water temp.	DUAL STATION
20	872066	1	Switch, coolant water temp.	
21	3862500	1	Temperature sensor	EXHAUST
22	3852825	1	Retainer	
23	3852208	3	Screw	
24	3860582	1	Screw	
25	3863440	1	Clamp	
26	3850571	1	Stud	
27	3852070	1	Washer	
28	3852002	1	Lock washer	
29	3852065	1	Nut	
30	3863456	1	Alarm kit	