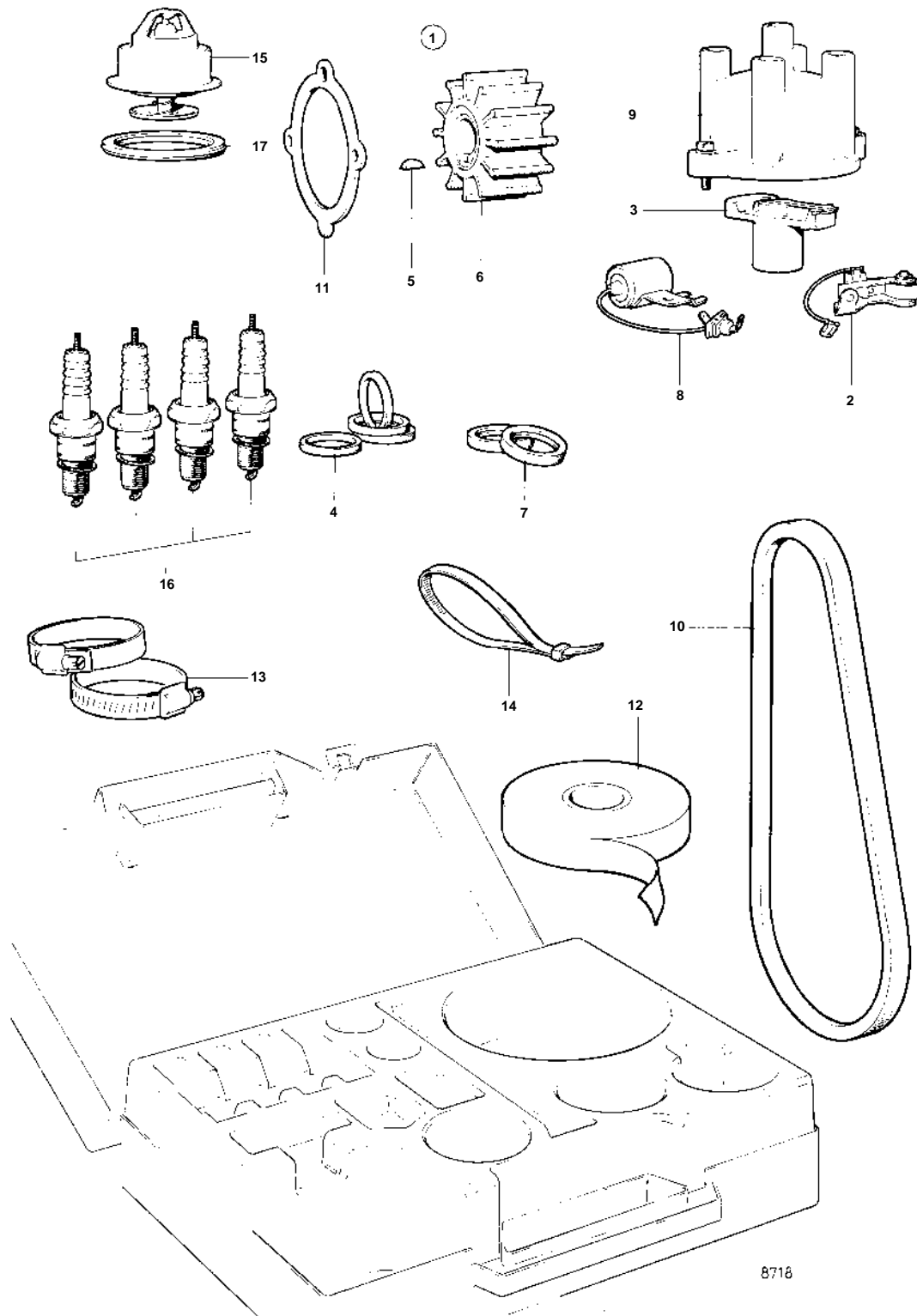


230A, 230B, 250A, 250B



230A, 230B, 250A, 250B

REF	PART NO.	QTY	DESCRIPTION	NOTES
1		1	Onboard kit	
2	243799	1	• Switch kit	
3	243903	1	• Rotor	
4	418412	4	• Sealing ring	
5	808007	1	• Woodruff key	
6		1	• IMPELLER	INCLUDED IN IMPELLER KIT 875575.
7	831622	2	• Sealing ring	
8	841262	1	• Capacitor	
9	841263	1	• Distributor cap	
10	966694	1	• V-belt	
11	855901	1	• Gasket	
12	858283	1	• Tape	
13	943476	2	• Hose clamp	
14	948210	10	• Cable tie	
15		1	• THERMOSTAT	INCLUDED IN THERMOSTAT KIT 875580.
16		4	• SPARK PLUG	INCLUDED IN SPARK PLUG KIT 875820.
17	416033	1	• Sealing ring	