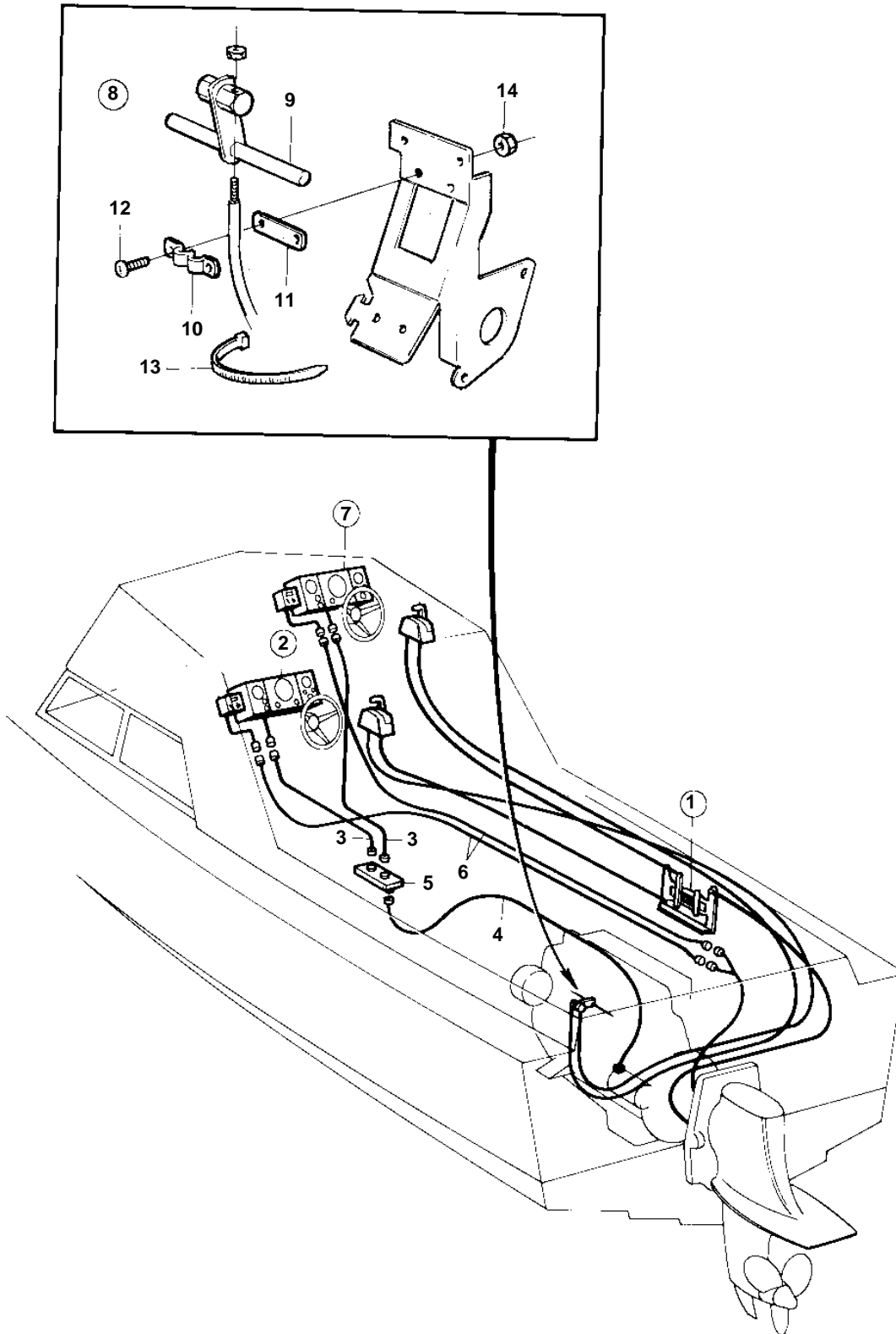


230A, 230B, 250A, 250B



8833

**230A, 230B, 250A, 250B**

REF	PART NO.	QTY	DESCRIPTION	SEE SEC.	NOTES
1	828164	1	Connection plate		
				11437	
2		1	INSTRUMENT PANEL		SEE GROUP 3
3		X	Cable trunk		L = 3000 MM
4	835670	X	Cable trunk		L = 6100 MM
5	1140317	1	Y-koppling		
6		X	Cable trunk		
7		1	Instrument panel		
				11436	
8		1	Mounting kit		
9		1	· Countershaft		
10	850182	1	· Cable attachment		
11	850183	1	· Spacer		
12	946753	2	· Cross recessed screw		
13	948210	1	· Cable tie		
14	955844	2	· Hexagon nut		