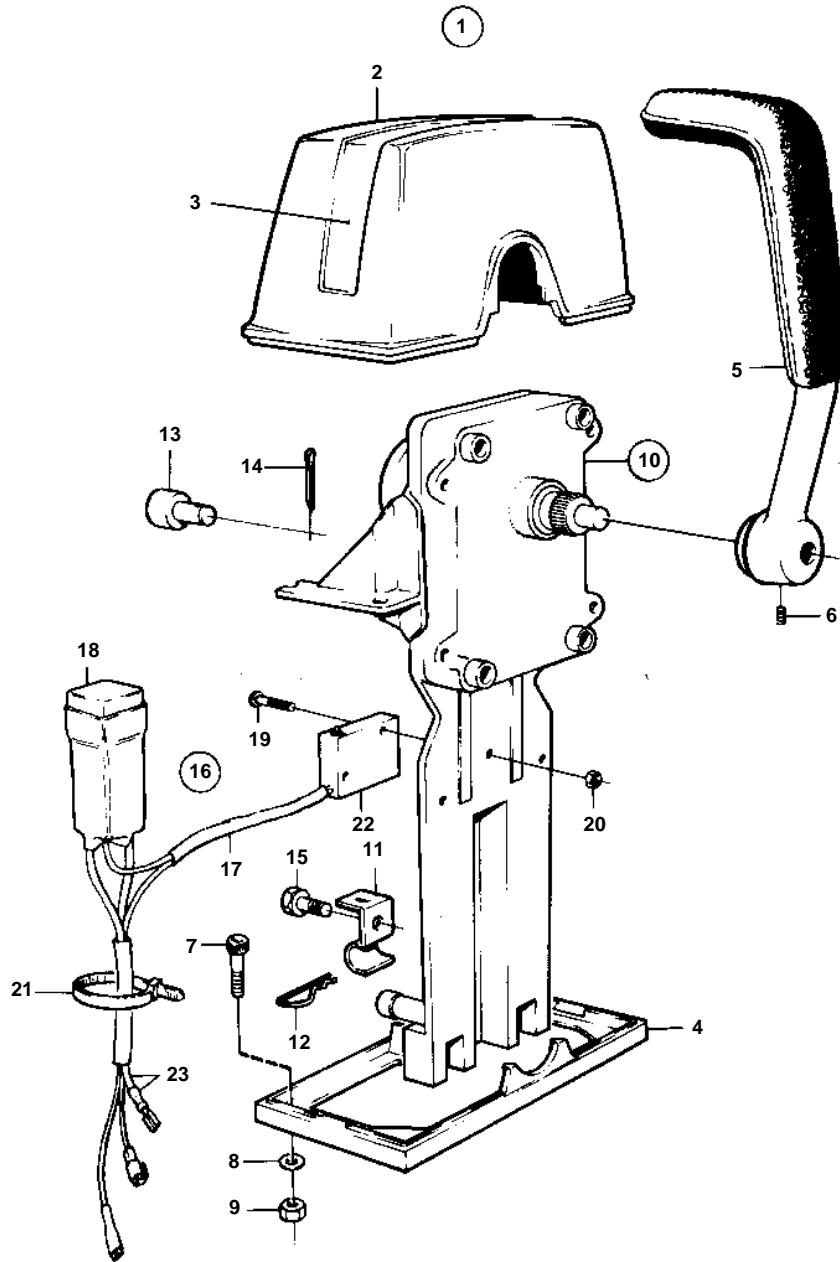


230A, 230B, 250A, 250B



7459

230A, 230B, 250A, 250B

REF	PART NO.	QTY	DESCRIPTION	NOTES
1	851602	1	Mounting kit	SINGLE
2	839472	1	• Cover	
3		1	• DECAL	
4	839474	1	• Plate	
5	839475	1	• Hand lever	
6	839693	1	• Lock screw	
7	947671	4	• Hex. socket screw	
8	960138	4	• Washer	
9	955780	4	• Hexagon nut	
10	851600	1	Control	
11	853423	1	• Retainer	
12	852924	1	• Clip	
13	839638	1	• Cube	
14	17253	1	• Split pin	
15	839664	1	Screw	
16	855352	1	Neutral position con	
17		1	• Cable kit	
18	876037	1	• Relay kit	(1501832)
19	946177	2	• Cross recessed screw	
20	947536	2	• Hexagon nut	
21	948210	X	• Cable tie	
22	850200	1	• Toggle switch	
23		X	CABLES AND TERMINALS	SEE GROUP 3